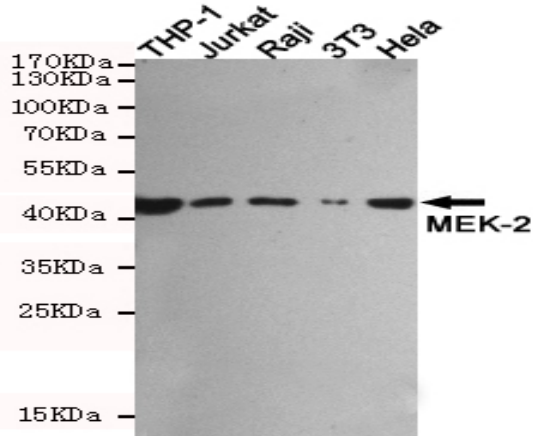


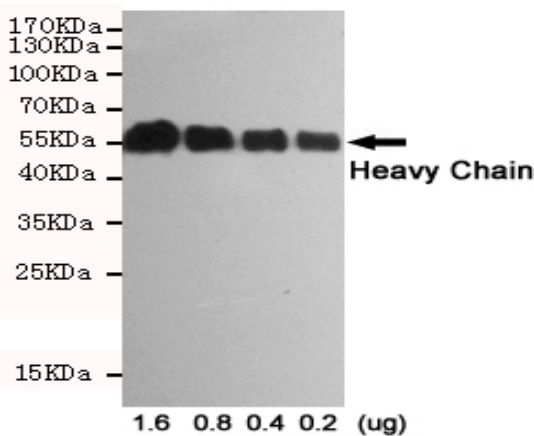
## Rabbit IgG mouse mAb

<b>Catalog No :</b>	YM1424
<b>Reactivity :</b>	Rabbit
<b>Applications :</b>	WB;ELISA
<b>Target :</b>	Rabbit IgG
<b>Gene Name :</b>	rabbit igg
<b>Human Gene Id :</b>	
<b>Human Swiss Prot No :</b>	
<b>Immunogen :</b>	Rabbit IgG
<b>Specificity :</b>	This antibody detects rabbit IgG.
<b>Formulation :</b>	Liquid in PBS containing 50% glycerol, 0.5% BSA and 0.02% sodium azide.
<b>Source :</b>	Monoclonal, Mouse
<b>Dilution :</b>	wb dilution 1:50000
<b>Purification :</b>	The antibody was affinity-purified from mouse ascites by affinity-chromatography using epitope-specific immunogen.
<b>Concentration :</b>	1 mg/ml
<b>Storage Stability :</b>	-15°C to -25°C/1 year(Do not lower than -25°C)
<b>Observed Band :</b>	

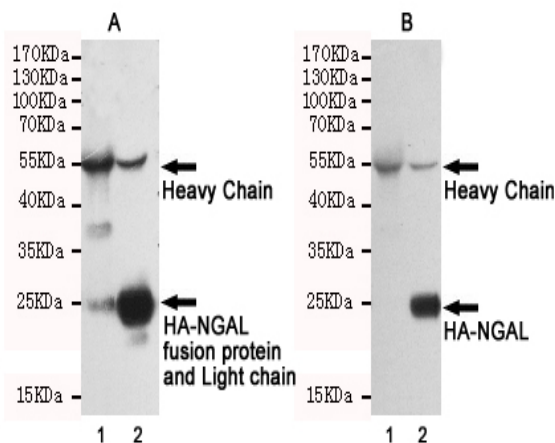
## Products Images



Western blot detection of MEK-2 in THP-1, Jurkat, Raji, 3T3 and HeLa cell lysates using 310001 (MEK-2 rabbit pAb, 1:1000 diluted), then incubated with 201069 (Rabbit IgG mAb, 1:50000 diluted). Anti-mouse IgG, HRP-linked Antibody was used for detecting. Predicted band size: 44 kDa. Observed band size: 44 kDa.



Western blot analysis of decreasing concentrations of total rabbit IgG reduced and denatured in 2X SDS loading buffer with DTT using Mouse Anti-Rabbit IgG (Heavy-Chain Specific) mAb (1:1000 diluted).



Immunoprecipitation analysis of CHO-K1 cell lysates transfected with HA-tagged NGAL using HA-Tag Rabbit pAb (390001, 1:1000 diluted) (lane 2). Lane 1 contains rabbit IgG IP control lysate. All lanes are probed with HA-Tag Rabbit pAb (390001, 1:1000 diluted) as the primary antibody. Panel A incubated with secondary antibodies Anti-Rabbit whole IgG, HRP-linked Antibody for detecting. Panel B incubated with Anti-Rabbit IgG (Heavy-Chain Specific) mAb (1:50000 diluted) and the Anti-mouse whole IgG, HRP-linked Antibody was used for detecting.