

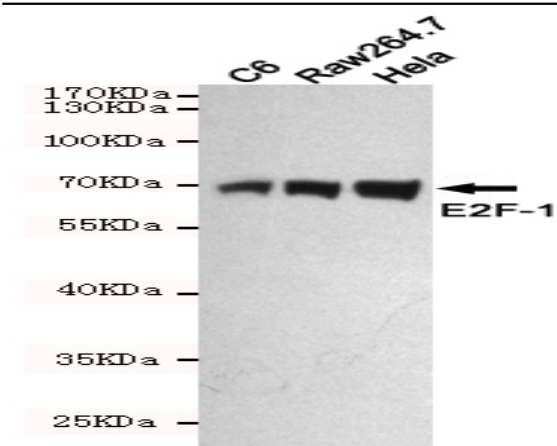
**E2F-1 mouse mAb**

<b>Catalog No :</b>	YM1428
<b>Reactivity :</b>	Human;Rat
<b>Applications :</b>	WB;IF;IP
<b>Target :</b>	E2F-1
<b>Fields :</b>	>>Endocrine resistance;>>Cell cycle;>>Mitophagy - animal;>>Cellular senescence;>>Cushing syndrome;>>Hepatitis C;>>Hepatitis B;>>Human cytomegalovirus infection;>>Human papillomavirus infection;>>Human T-cell leukemia virus 1 infection;>>Kaposi sarcoma-associated herpesvirus infection;>>Epstein-Barr virus infection;>>Pathways in cancer;>>MicroRNAs in cancer;>>Chemical carcinogenesis - receptor activation;>>Pancreatic cancer;>>Glioma;>>Prostate cancer;>>Melanoma;>>Bladder cancer;>>Chronic myeloid leukemia;>>Small cell lung cancer;>>Non-small cell lung cancer;>>Breast cancer;>>Hepatocellular carcinoma;>>Gastric cancer
<b>Gene Name :</b>	e2f1
<b>Human Gene Id :</b>	1869
<b>Human Swiss Prot No :</b>	Q01094
<b>Mouse Swiss Prot No :</b>	Q61501
<b>Immunogen :</b>	Purified recombinant human E2F-1 protein fragments expressed in E.coli.
<b>Specificity :</b>	This antibody detects endogenous levels of E2F-1 and does not cross-react with related proteins.
<b>Formulation :</b>	Liquid in PBS containing 50% glycerol, 0.5% BSA and 0.02% sodium azide.
<b>Source :</b>	Monoclonal, Mouse
<b>Dilution :</b>	wb dilution 1:500 icc dilution 1:100. IF 1:50-200
<b>Purification :</b>	The antibody was affinity-purified from mouse ascites by affinity-chromatography using epitope-specific immunogen.

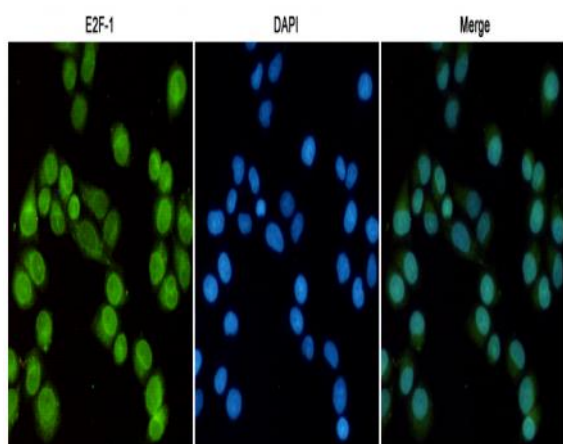
<b>Concentration :</b>	1 mg/ml
<b>Storage Stability :</b>	-15°C to -25°C/1 year(Do not lower than -25°C)
<b>Observed Band :</b>	60kD
<b>Cell Pathway :</b>	Cell_Cycle_G1S;Cell_Cycle_G2M_DNA;Pathways in cancer;Pancreatic cancer;Glioma;Prostate cancer;Melanoma;Bladder cancer;Chronic myeloid leukemia;Small cell lung cancer;Non-small cell lung cancer;
<b>Background :</b>	<p>The protein encoded by this gene is a member of the E2F family of transcription factors. The E2F family plays a crucial role in the control of cell cycle and action of tumor suppressor proteins and is also a target of the transforming proteins of small DNA tumor viruses. The E2F proteins contain several evolutionarily conserved domains found in most members of the family. These domains include a DNA binding domain, a dimerization domain which determines interaction with the differentiation regulated transcription factor proteins (DP), a transactivation domain enriched in acidic amino acids, and a tumor suppressor protein association domain which is embedded within the transactivation domain. This protein and another 2 members, E2F2 and E2F3, have an additional cyclin binding domain. This protein binds preferentially to retinoblastoma protein pRB in a cell-cycle dependent manner. It can media</p>
<b>Function :</b>	<p>function:Transcription activator that binds DNA cooperatively with dp proteins through the E2 recognition site, 5'-TTTC[CG]CGC-3' found in the promoter region of a number of genes whose products are involved in cell cycle regulation or in DNA replication. The DRTF1/E2F complex functions in the control of cell-cycle progression from G1 to S phase. E2F-1 binds preferentially RB1 protein, in a cell-cycle dependent manner. It can mediate both cell proliferation and p53-dependent apoptosis.,PTM:Phosphorylated by CDK2 and cyclin A-CDK2 in the S-phase.,similarity:Belongs to the E2F/DP family.,subunit:Component of the DRTF1/E2F transcription factor complex. Forms heterodimers with DP family members. The E2F-1 complex binds specifically hypophosphorylated retinoblastoma protein RB1. During the cell cycle, RB1 becomes phosphorylated in mid-to-late G1 phase, detaches from the DRTF1/E2F complex, ren</p>
<b>Subcellular Location :</b>	Nucleus .
<b>Expression :</b>	Brain,Epithelium,Pancreas,Skin,

---

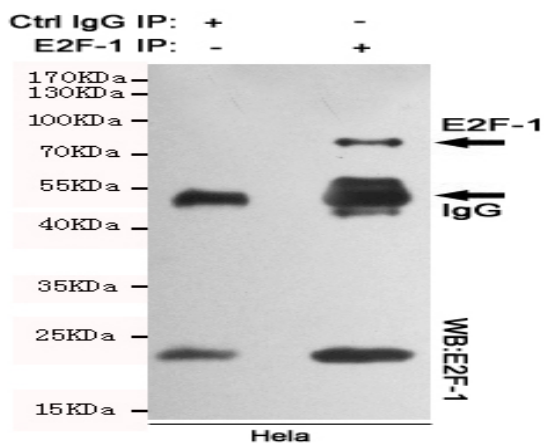
## Products Images



Western blot detection of E2F-1 in C6,Raw264.7 and HeLa cell lysates using E2F-1 mouse mAb (1:500 diluted).Predicted band size:70KDa.Observed band size:70KDa.



Immunofluorescent analysis of HeLa cells fixed with 4% Paraformaldehyde and using anti-E2F-1 mouse mAb (dilution 1:100). DAPI was used to stain nucleus(blue).



Immunoprecipitation analysis of HeLa cell lysates using E2F-1 mouse mAb.