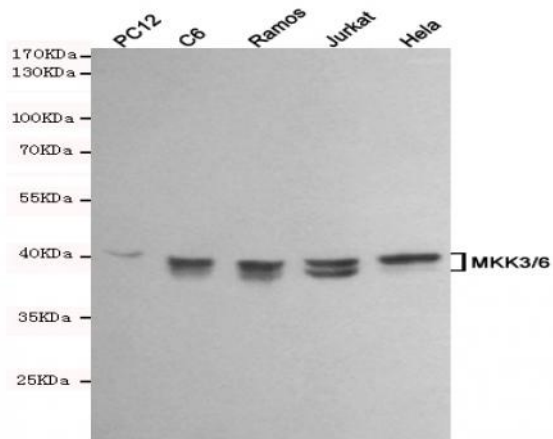


MKK3/6 mouse mAb

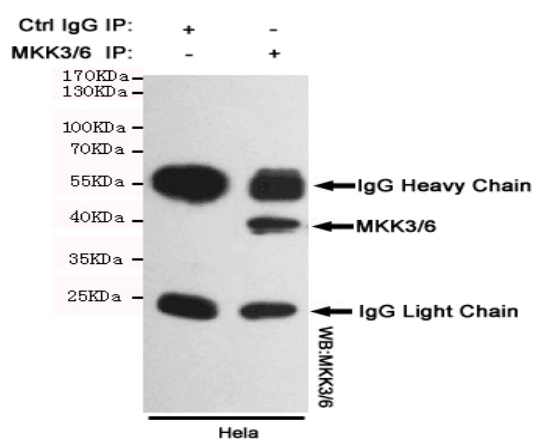
Catalog No :	YM1460
Reactivity :	Human;Rat
Applications :	WB;IP
Target :	MKK3/6
Fields :	>>MAPK signaling pathway;>>Rap1 signaling pathway;>>Cellular senescence;>>Osteoclast differentiation;>>Toll-like receptor signaling pathway;>>Fc epsilon RI signaling pathway;>>TNF signaling pathway;>>Inflammatory mediator regulation of TRP channels;>>GnRH signaling pathway;>>Growth hormone synthesis, secretion and action;>>Alcoholic liver disease;>>Amyotrophic lateral sclerosis;>>Pathways of neurodegeneration - multiple diseases;>>Salmonella infection;>>Yersinia infection;>>Toxoplasmosis;>>Hepatitis B;>>Human cytomegalovirus infection;>>Kaposi sarcoma-associated herpesvirus infection;>>Epstein-Barr virus infection;>>Human immunodeficiency virus 1 infection;>>PD-L1 expression and PD-1 checkpoint pathway in cancer;>>Lipid and atherosclerosis;>>Fluid shear stress and atherosclerosis
Gene Name :	map2k3
Human Gene Id :	5608
Human Swiss Prot No :	P52564
Mouse Swiss Prot No :	P70236
Immunogen :	Purified recombinant human MKK6 protein fragments expressed in E.coli.
Specificity :	This antibody detects endogenous levels of MKK3 and MKK6 and does not cross-react with related proteins.
Formulation :	Liquid in PBS containing 50% glycerol, 0.5% BSA and 0.02% sodium azide.
Source :	Monoclonal, Mouse
Dilution :	wb dilution 1:1000

Purification :	The antibody was affinity-purified from mouse ascites by affinity-chromatography using epitope-specific immunogen.
Concentration :	1 mg/ml
Storage Stability :	-15°C to -25°C/1 year(Do not lower than -25°C)
Observed Band :	40kD
Cell Pathway :	MAPK_ERK_Growth;MAPK_G_Protein;Toll_Like;Fc epsilon RI;GnRH;Amyotrophic lateral sclerosis (ALS);
Background :	This gene encodes a member of the dual specificity protein kinase family, which functions as a mitogen-activated protein (MAP) kinase kinase. MAP kinases, also known as extracellular signal-regulated kinases (ERKs), act as an integration point for multiple biochemical signals. This protein phosphorylates and activates p38 MAP kinase in response to inflammatory cytokines or environmental stress. As an essential component of p38 MAP kinase mediated signal transduction pathway, this gene is involved in many cellular processes such as stress induced cell cycle arrest, transcription activation and apoptosis. [provided by RefSeq, Jul 2008],
Function :	catalytic activity:ATP + a protein = ADP + a phosphoprotein.,enzyme regulation:Probably activated by dual phosphorylation on Ser-207 and Thr-211.,function:Catalyzes the concomitant phosphorylation of a threonine and a tyrosine residue in MAP kinase p38 exclusively.,induction:Strongly activated by UV, anisomycin, and osmotic shock but not by phorbol esters, NGF or EGF.,PTM:Acetylation of Ser-207 and Thr-211 by Yersinia yopJ prevents phosphorylation and activation, thus blocking the MAPK signaling pathway.,PTM:Weakly autophosphorylated.,similarity:Belongs to the protein kinase superfamily.,similarity:Belongs to the protein kinase superfamily. STE Ser/Thr protein kinase family. MAP kinase kinase subfamily.,similarity:Contains 1 protein kinase domain.,subunit:Interacts with Yersinia yopJ.,tissue specificity:Isoform 2 is only expressed in skeletal muscle. Isoform 1, on the other hand, is found
Subcellular Location :	Nucleus . Cytoplasm . Cytoplasm, cytoskeleton . Binds to microtubules.
Expression :	Isoform 2 is only expressed in skeletal muscle. Isoform 1 is expressed in skeletal muscle, heart, and in lesser extent in liver or pancreas.

Products Images



Western blot analysis of extracts from PC12, C6, Ramos, Jurkat and HeLa cell lysates using MKK3/6 mouse mAb (1:1000 diluted). Predicted band size: 40kDa. Observed band size: 40kDa.



Immunoprecipitation analysis of HeLa cell lysates using MKK3/6 mouse mAb.