

Lamin B1 mouse mAb

Catalog No :	YM1517
Reactivity :	Human;Mouse;Monkey
Applications :	WB
Target :	Lamin B1
Fields :	>>Apoptosis
Gene Name :	Lamin B1
Human Gene Id :	4001
Human Swiss Prot No :	P20700
Mouse Swiss Prot No :	P14733
Immunogen :	Recombinant human Lamin B1 protein.
Specificity :	This antibody detects endogenous levels of Lamin B1 and does not cross-react with related proteins.
Formulation :	Liquid in PBS containing 50% glycerol, 0.5% BSA and 0.02% sodium azide.
Source :	Monoclonal, Mouse
Dilution :	wb dilution 1:500
Purification :	The antibody was affinity-purified from mouse ascites by affinity-chromatography using epitope-specific immunogen.
Concentration :	1 mg/ml
Storage Stability :	-15°C to -25°C/1 year(Do not lower than -25°C)
Observed Band :	68kD

Background : lamin B1(LMNB1) Homo sapiens This gene encodes one of the two B-type lamin proteins and is a component of the nuclear lamina. A duplication of this gene is associated with autosomal dominant adult-onset leukodystrophy (ADLD). Alternative splicing results in multiple transcript variants. [provided by RefSeq, Dec 2015],

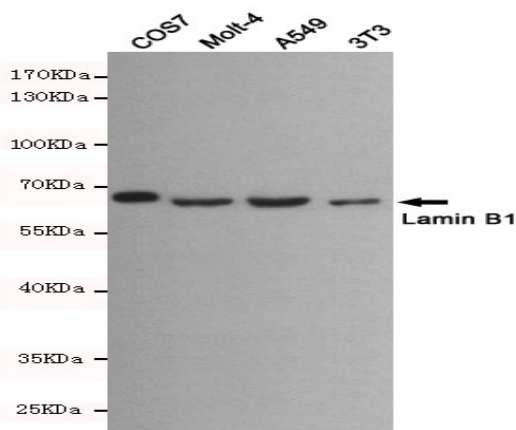
Function : disease:Defects in LMNB1 are the cause of leukodystrophy demyelinating autosomal dominant adult-onset (ADLD) [MIM:169500]. ADLD is a slowly progressive and fatal demyelinating leukodystrophy, presenting in the fourth or fifth decade of life. Clinically characterized by early autonomic abnormalities, pyramidal and cerebellar dysfunction, and symmetric demyelination of the CNS. It differs from multiple sclerosis and other demyelinating disorders in that neuropathology shows preservation of oligodendroglia in the presence of subtotal demyelination and lack of astrogliosis.,function:Lamins are components of the nuclear lamina, a fibrous layer on the nucleoplasmic side of the inner nuclear membrane, which is thought to provide a framework for the nuclear envelope and may also interact with chromatin.,miscellaneous:The structural integrity of the lamina is strictly controlled by the cell cycle

Subcellular Location : Nucleus lamina .

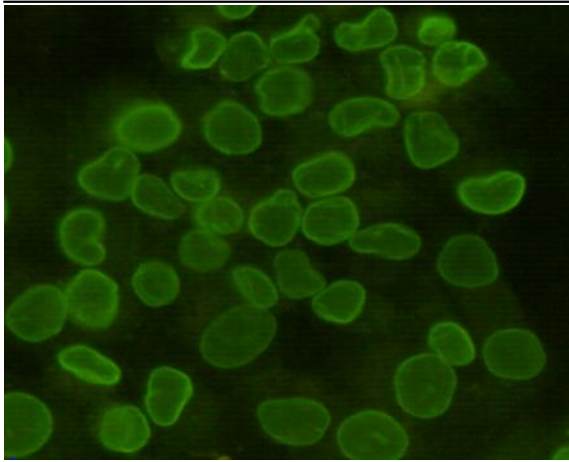
Location :

Expression : Brain,Cajal-Retzius cell,Epithelium,Eye,Fetal brain cortex,Ovarian carcinoma,Placenta,Uterus,

Products Images



Western blot detection of Lamin B1 in COS7, Molt-4, A549 and 3T3 cell lysates using Lamin B1 mouse mAb(dilution 1:500).Predicted band size:68kDa.Observed band size:68kDa.



Immunocytochemistry staining of HeLa cells fixed with 4% Paraformaldehyde and using anti-Lamin B1 mouse mAb (dilution 1:100).