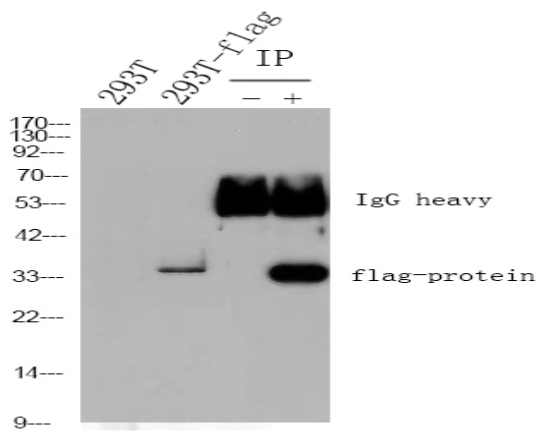


**HRP\* Goat Anti Mouse IgG(H+L)**

<b>Catalog No :</b>	RS0001
<b>Reactivity :</b>	Mouse
<b>Applications :</b>	WB;IHC;ELISA
<b>Target :</b>	Mouse IgG(H+L)
<b>Formulation :</b>	Liquid in PBS containing 50% glycerol, 0.5% BSA and 0.02% sodium azide.
<b>Source :</b>	Goat
<b>Dilution :</b>	WB 1:5000-20000;IHC 1:20-100;ELISA 1:5000-20000
<b>Purification :</b>	The antibody was affinity-purified from goat antiserum by affinity-chromatography using epitope-specific immunogen.
<b>Concentration :</b>	4 mg/ml
<b>Storage Stability :</b>	-15°C to -25°C/1 year(Do not lower than -25°C)
<b>Background :</b>	Immunoway secondary antibodies are available conjugated to enzyme, biotin or fluorophore for use in a variety of antibody-based applications including Western Blot, ImmunoHistoChemistry, ImmunoFluorescence, Flow Cytometry and ELISA. We offer high quality secondary antibodies from goat, rabbit and donkey sources for your each application. Serum adsorbed secondary antibodies are also available and are recommended for use with immunoglobulin-rich samples.

**Products Images**



1) Input: 293T transfected N-flag protein Lysate 2) IP product: IP dilute 1: 200, 293T transfected N-flag protein Lysate Western blot analysis: primary antibody : 1:10000 Secondary antibody: Goat anti-Mouse IgG(RS0001), 1: 5000