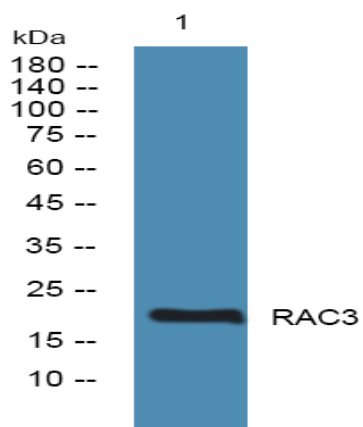


RAC3 Polyclonal Antibody

Catalog No :	YN1163
Reactivity :	Human;Mouse
Applications :	WB;ELISA
Target :	RAC3
Fields :	>>MAPK signaling pathway;>>Ras signaling pathway;>>Rap1 signaling pathway;>>cAMP signaling pathway;>>Chemokine signaling pathway;>>Sphingolipid signaling pathway;>>Wnt signaling pathway;>>Axon guidance;>>VEGF signaling pathway;>>Focal adhesion;>>Adherens junction;>>Natural killer cell mediated cytotoxicity;>>B cell receptor signaling pathway;>>Fc epsilon RI signaling pathway;>>Regulation of actin cytoskeleton;>>Yersinia infection;>>Human cytomegalovirus infection;>>Human immunodeficiency virus 1 infection;>>Pathways in cancer;>>Colorectal cancer;>>Pancreatic cancer;>>Choline metabolism in cancer;>>Viral myocarditis;>>Fluid shear stress and atherosclerosis
Gene Name :	RAC3
Protein Name :	Ras-related C3 botulinum toxin substrate 3 (p21-Rac3)
Human Gene Id :	5881
Human Swiss Prot No :	P60763
Mouse Swiss Prot No :	P60764
Immunogen :	Synthesized peptide derived from human protein . at AA range: 80-160
Specificity :	RAC3 Polyclonal Antibody detects endogenous levels of protein.
Formulation :	Liquid in PBS containing 50% glycerol, and 0.02% sodium azide.
Source :	Polyclonal, Rabbit,IgG
Dilution :	WB 1:500-2000 ELISA 1:5000-20000

Purification :	The antibody was affinity-purified from rabbit antiserum by affinity-chromatography using epitope-specific immunogen.
Concentration :	1 mg/ml
Storage Stability :	-15°C to -25°C/1 year(Do not lower than -25°C)
Observed Band :	21kD
Cell Pathway :	MAPK_ERK_Growth;MAPK_G_Protein;WNT;WNT-T CELLAxon guidance;VEGF;Focal adhesion;Adherens_Junction;Natural killer cell mediated cytotoxicity;B_Cell_Antigen;Fc epsilon RI;Regulates Actin and Cytoskeleton
Background :	The protein encoded by this gene is a GTPase which belongs to the RAS superfamily of small GTP-binding proteins. Members of this superfamily appear to regulate a diverse array of cellular events, including the control of cell growth, cytoskeletal reorganization, and the activation of protein kinases. Alternative splicing results in multiple transcript variants. [provided by RefSeq, Oct 2015],
Function :	function:Plasma membrane-associated small GTPase which cycles between an active GTP-bound and inactive GDP-bound state. In active state binds to a variety of effector proteins to regulate cellular responses, such as cell spreading and the formation of actin-based protusions including lamellipodia and membrane ruffles.,induction:Expression down-regulated in quiescent fibroblasts and clearly induced by serum stimulation.,similarity:Belongs to the small GTPase superfamily. Rho family.,subcellular location:Membrane-associated when activated. Co-localizes with NRBP to endomembranes and at the cell periphery in lamellipodia.,subunit:Interacts with the GEF protein DOCK7, which promotes the exchange between GDP and GTP, and therefore activates it. Interacts with C1D.,tissue specificity:Highest levels in brain, also detected in heart, placenta and pancreas.,
Subcellular Location :	Cytoplasm. Endomembrane system. Cell projection, lamellipodium. Cytoplasm, perinuclear region. Cell membrane. Cytoplasm, cytoskeleton. Membrane-associated when activated. Colocalizes with NRBP to endomembranes and at the cell periphery in lamellipodia. Colocalized with CIB1 in the perinuclear area and at the cell periphery.
Expression :	Highest levels in brain, also detected in heart, placenta and pancreas.

Products Images



Western blot analysis of lysates from A431 cells, primary antibody was diluted at 1:1000, 4° over night