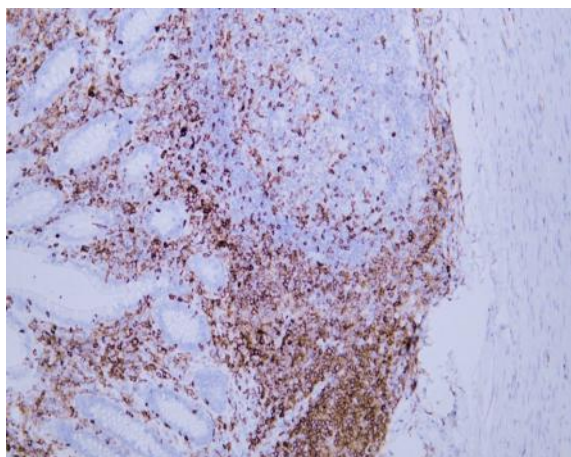


CD43 (ABT-CD43) IHC kit

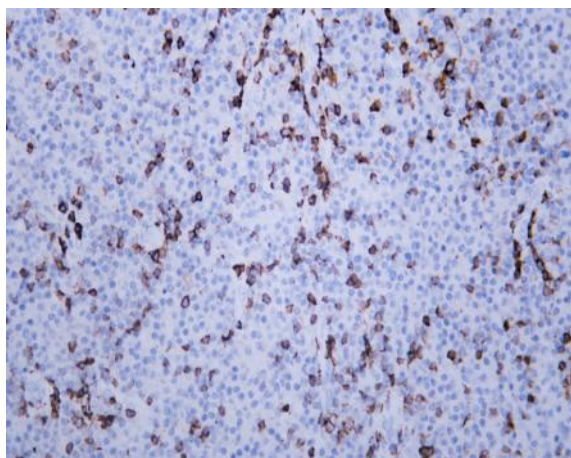
Catalog No :	IHCM6154
Reactivity :	Human;
Applications :	IHC
Target :	CD43
Fields :	>>Cell adhesion molecules
Gene Name :	SPN CD43
Protein Name :	Leukosialin (Galactoglycoprotein) (GALGP) (Leukocyte sialoglycoprotein) (Sialophorin) (CD antigen CD43)
Human Gene Id :	6693
Human Swiss Prot No :	P16150
Immunogen :	Synthesized peptide derived from human CD43 AA range: 300-400
Specificity :	The antibody can specifically recognize human CD43 protein.
Source :	Mouse, Monoclonal/IgG1, kappa
Purification :	The antibody was affinity-purified from ascites by affinity-chromatography using specific immunogen.
Storage Stability :	2°C to 8°C/1 year
Cell Pathway :	Cell adhesion molecules (CAMs);
Background :	The protein encoded by this gene is a major sialoglycoprotein found on the surface of thymocytes, T lymphocytes, monocytes, granulocytes, and some B lymphocytes. It may be part of a physiologic ligand-receptor complex involved in T-cell activation. During T-cell activation, this protein is actively removed from the T-cell-APC (antigen-presenting cell) contact site, suggesting a negative regulatory role in adaptive immune response. [provided by RefSeq, Sep 2011],

Function :	disease:CD43 expression is defective on the T-cells of males with the immunodeficiency Wiskott-Aldrich syndrome. Affected males are susceptible to opportunistic infections and do not respond to polysaccharide antigens, reflecting defects in cytotoxic and helper T-cell functions.,function:One of the major glycoproteins of thymocytes and T lymphocytes. Plays a role in the physicochemical properties of the T-cell surface and in lectin binding. Presents carbohydrate ligands to selectins. Has an extended rodlike structure that could protrude above the glycocalyx of the cell and allow multiple glycan chains to be accessible for binding. Is a counter receptor for SN/Siglec-1 (By similarity). During T-cell activation is actively removed from the T-cell-APC (antigen-presenting cell) contact site thus suggesting a negative regulatory role in adaptive immune response.,PTM:Glycosylated; has a high c
Subcellular Location :	Membranous
Expression :	Cell surface of thymocytes, T-lymphocytes, neutrophils, plasma cells and myelomas.

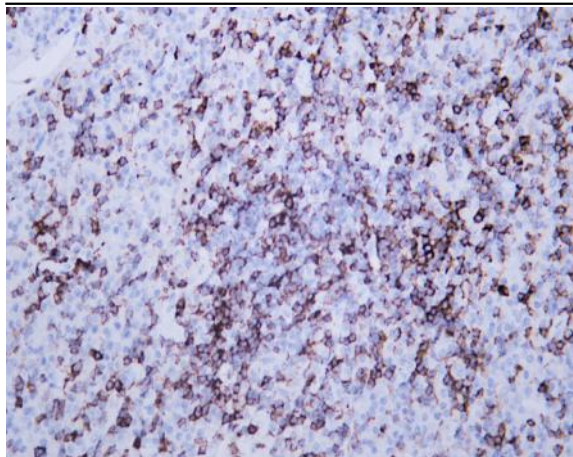
Products Images



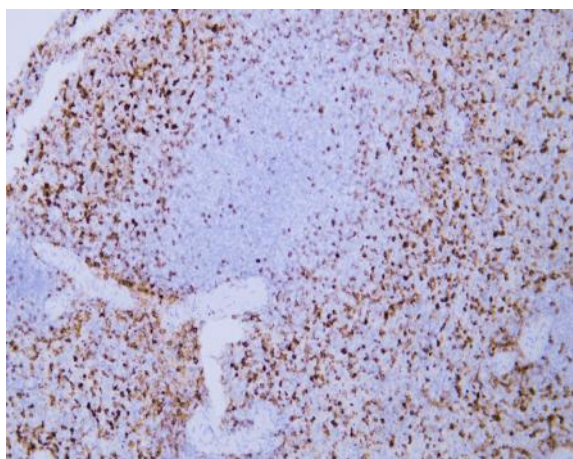
Human appendix tissue was stained with Anti-CD43 (ABT-CD43) Antibody



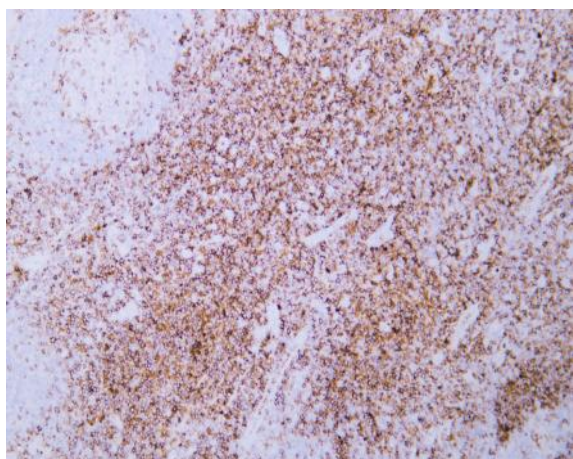
Human lymphoma tissue was stained with Anti-CD43 (ABT-CD43) Antibody



Human lymphoma tissue was stained with Anti-CD43 (ABT-CD43) Antibody



Human spleen tissue was stained with Anti-CD43 (ABT-CD43) Antibody



Human tonsil tissue was stained with Anti-CD43 (ABT-CD43) Antibody