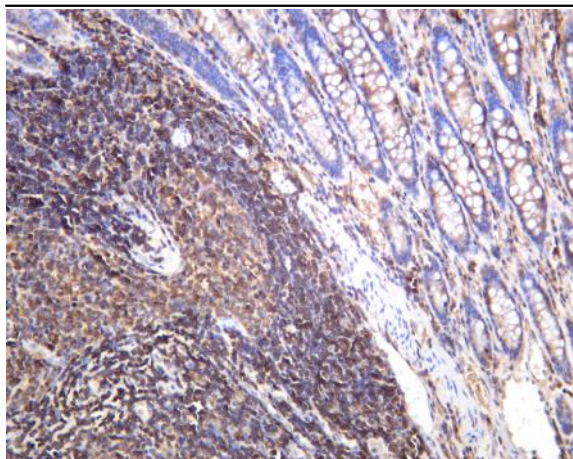


p90RSK (phospho Ser380) (PT0386R) PT® Rabbit mAb

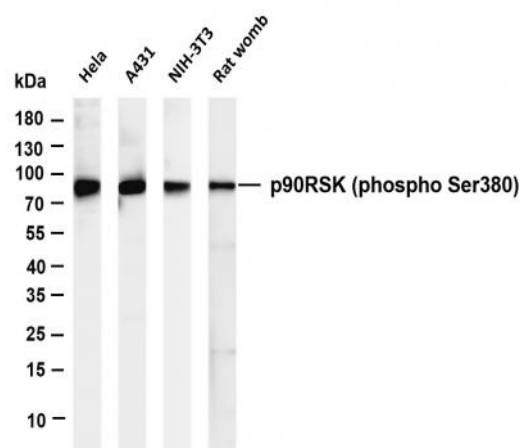
Catalog No :	YM8236
Reactivity :	Human; Mouse; Rat;
Applications :	WB;IHC;IF;IP;ELISA
Target :	Rsk-1
Fields :	>>MAPK signaling pathway;>>Oocyte meiosis;>>mTOR signaling pathway;>>Thermogenesis;>>Long-term potentiation;>>Neurotrophin signaling pathway;>>Progesterone-mediated oocyte maturation;>>Insulin resistance;>>Yersinia infection;>>Chemical carcinogenesis - receptor activation
Gene Name :	RPS6KA1
Protein Name :	Ribosomal protein S6 kinase alpha-1
Human Gene Id :	6195
Human Swiss Prot No :	Q15418
Mouse Swiss Prot No :	P18653
Rat Gene Id :	81771
Rat Swiss Prot No :	Q63531
Specificity :	endogenous
Formulation :	PBS, 50% glycerol, 0.05% Proclin 300, 0.05%BSA
Source :	Monoclonal, rabbit, IgG, Kappa
Dilution :	IHC 1:2000-1:5000;WB 1:2000-1:10000;IF 1:200-1:1000;ELISA 1:5000-1:20000;IP 1:50-1:200;
Purification :	Protein A

Storage Stability :	<u>-15°C to -25°C/1 year(Do not lower than -25°C)</u>
Molecularweight :	<u>83kD</u>
Observed Band :	<u>83kD</u>
Cell Pathway :	<u>Regulates Angiogenesis; Insulin Receptor; B Cell Receptor; AMPK</u>
Background :	<u>ribosomal protein S6 kinase A1(RPS6KA1) Homo sapiens This gene encodes a member of the RSK (ribosomal S6 kinase) family of serine/threonine kinases. This kinase contains 2 nonidentical kinase catalytic domains and phosphorylates various substrates, including members of the mitogen-activated kinase (MAPK) signalling pathway. The activity of this protein has been implicated in controlling cell growth and differentiation. Alternate transcriptional splice variants, encoding different isoforms, have been characterized. [provided by RefSeq, Jul 2008],</u>
Function :	<u>catalytic activity:ATP + a protein = ADP + a phosphoprotein.,caution:The sequence shown here is derived from an Ensembl automatic analysis pipeline and should be considered as preliminary data.,cofactor:Magnesium.,enzyme regulation:Activated by multiple phosphorylations on threonine and serine residues.,function:Serine/threonine kinase that may play a role in mediating the growth-factor and stress induced activation of the transcription factor CREB.,PTM:Autophosphorylated on Ser-380, as part of the activation process.,similarity:Belongs to the protein kinase superfamily.,similarity:Belongs to the protein kinase superfamily. AGC Ser/Thr protein kinase family. S6 kinase subfamily.,similarity:Contains 1 AGC-kinase C-terminal domain.,similarity:Contains 2 protein kinase domains.,subunit:Forms a complex with either ERK1 or ERK2 in quiescent cells. Transiently dissociates following mitogenic s</u>
Subcellular Location :	<u>Cytoplasm, Nucleus</u>
Expression :	<u>Colon,Epithelium,</u>

Products Images



Human colon carcinoma was stained with anti-p90RSK (phospho Ser380) rabbit antibody



Various whole cell lysates were separated by 4-20% SDS-PAGE, and the membrane was blotted with anti-p90RSK (phospho Ser380) (PT0386R) antibody. The HRP-conjugated Goat anti-Rabbit IgG(H + L) antibody was used to detect the antibody. Lane 1: HeLa Lane 2: A431 Lane 3: NIH-3T3 Lane 4: Rat womb
Predicted band size: 83kDa Observed band size: 83kDa