

VE Cadherin (PT0553R) PT® Rabbit mAb

Catalog No :	YM8373
Reactivity :	Mouse; Rat;
Applications :	WB;IHC;IF;IP;ELISA
Target :	VE-Cadherin
Fields :	>>Cell adhesion molecules;>>Leukocyte transendothelial migration;>>Fluid shear stress and atherosclerosis
Gene Name :	CDH5
Protein Name :	Cadherin-5
Human Gene Id :	1003
Human Swiss Prot No :	P33151
Mouse Gene Id :	12562
Mouse Swiss Prot No :	P55284
Specificity :	endogenous
Formulation :	PBS, 50% glycerol, 0.05% Proclin 300, 0.05%BSA
Source :	Monoclonal, rabbit, IgG, Kappa
Dilution :	IHC 1:200-1:1000;WB 1:2000-1:10000;IF 1:200-1:1000;ELISA 1:5000-1:20000;IP 1:50-1:200;
Purification :	Protein A
Storage Stability :	-15°C to -25°C/1 year(Do not lower than -25°C)
Molecularweight :	88kD

Observed Band : 90-140kD

Cell Pathway : Cell adhesion molecules (CAMs);Leukocyte transendothelial migration;

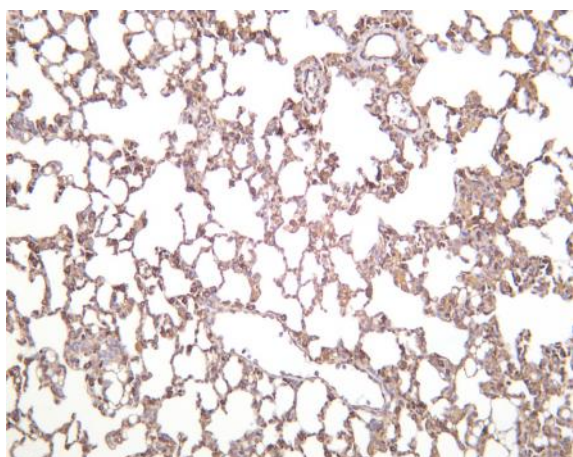
Background : This gene encodes a classical cadherin of the cadherin superfamily. The encoded preprotein is proteolytically processed to generate the mature glycoprotein. This calcium-dependent cell-cell adhesion molecule is comprised of five extracellular cadherin repeats, a transmembrane region and a highly conserved cytoplasmic tail. Functioning as a classical cadherin by imparting to cells the ability to adhere in a homophilic manner, this protein plays a role in endothelial adherens junction assembly and maintenance. This gene is located in a gene cluster in a region on the long arm of chromosome 16 that is involved in loss of heterozygosity events in breast and prostate cancer. [provided by RefSeq, Nov 2015],

Function : function:Cadherins are calcium dependent cell adhesion proteins.,function:Cadherins are calcium dependent cell adhesion proteins. They preferentially interact with themselves in a homophilic manner in connecting cells; cadherins may thus contribute to the sorting of heterogeneous cell types. This cadherin may play a important role in endothelial cell biology through control of the cohesion and organization of the intercellular junctions. It associates with alpha-catenin forming a link to the cytoskeleton.,similarity:Contains 5 cadherin domains.,subcellular location:Found at cell-cell boundaries and probably at cell-matrix boundaries.,tissue specificity:Endothelial tissues and brain.,

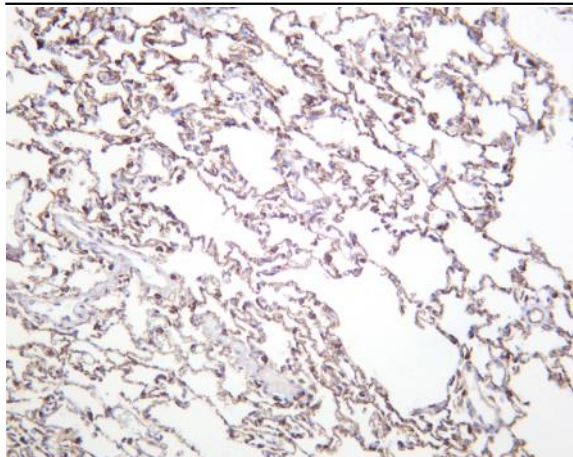
Subcellular Location : Membrane

Location :**Expression :** Endothelial tissues and brain.

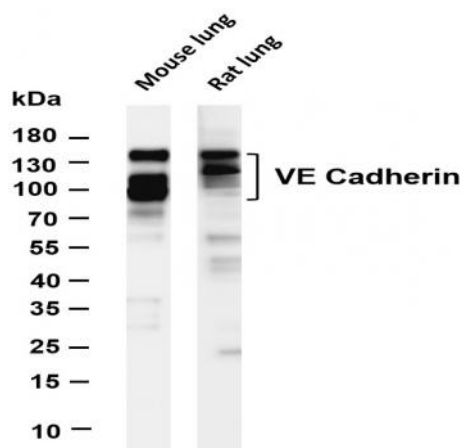
Products Images



Mouse lung was stained with anti-VE Cadherin (PT0553R) rabbit antibody



Rat lung was stained with anti-VE Cadherin (PT0553R) rabbit antibody



Various whole cell lysates were separated by 4-20% SDS-PAGE, and the membrane was blotted with anti-VE Cadherin (PT0553R) antibody. The HRP-conjugated Goat anti-Rabbit IgG(H + L) antibody was used to detect the antibody. Lane 1: Mouse lung Lane 2: Rat lung Predicted band size: 88kDa Observed band size: 90-140kDa