

**SIX2 (PT0580R) PT® Rabbit mAb**

<b>Catalog No :</b>	YM8392
<b>Reactivity :</b>	Human; Mouse; Rat;
<b>Applications :</b>	WB;IF;IP;ELISA
<b>Target :</b>	Six2
<b>Gene Name :</b>	SIX2
<b>Protein Name :</b>	Homeobox protein SIX2
<b>Human Gene Id :</b>	10736
<b>Human Swiss Prot No :</b>	Q9NPC8
<b>Mouse Gene Id :</b>	20472
<b>Mouse Swiss Prot No :</b>	Q62232
<b>Specificity :</b>	endogenous
<b>Formulation :</b>	PBS, 50% glycerol, 0.05% Proclin 300, 0.05%BSA
<b>Source :</b>	Monoclonal, rabbit, IgG, Kappa
<b>Dilution :</b>	WB 1:2000-1:10000;IF 1:200-1:1000;ELISA 1:5000-1:20000;IP 1:50-1:200;
<b>Purification :</b>	Protein A
<b>Storage Stability :</b>	-15°C to -25°C/1 year(Do not lower than -25°C)
<b>Molecularweight :</b>	32kD
<b>Observed Band :</b>	38kD
<b>Background :</b>	This gene is a member of the vertebrate gene family which encode proteins

homologous to the Drosophila *sine oculis* homeobox protein. The encoded protein is a transcription factor which, like other members of this gene family, may be involved in limb or eye development. [provided by RefSeq, Dec 2008],

**Function :**

function:May be involved in limb tendon and ligament development.,similarity:Belongs to the SIX/Sine oculis homeobox family.,similarity:Contains 1 homeobox DNA-binding domain.,tissue specificity:Strongly expressed in skeletal muscle.,

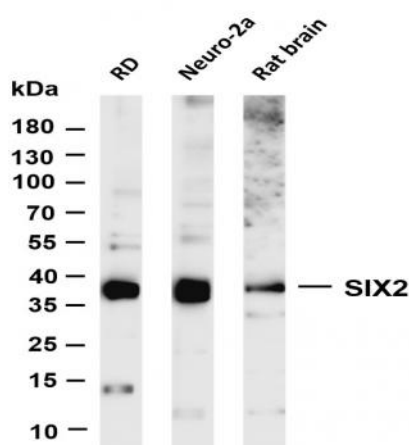
**Subcellular Location :**

Nucleus

**Expression :**

Strongly expressed in skeletal muscle. Expressed in Wilms' tumor and in the cap mesenchyme of fetal kidney (at protein level).

## Products Images



Various whole cell lysates were separated by 4-20% SDS-PAGE, and the membrane was blotted with anti-SIX2 (PT0580R) antibody. The HRP-conjugated Goat anti-Rabbit IgG(H + L) antibody was used to detect the antibody. Lane 1: RD Lane 2: Neuro-2a Lane 3: Rat brain Predicted band size: 32kDa Observed band size: 38kDa