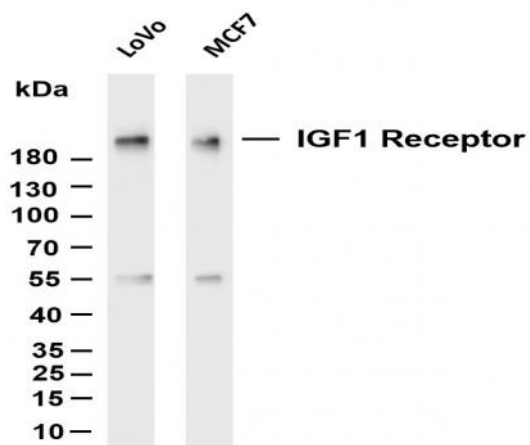


**IGF1 Receptor (PT0136R) PT® Rabbit mAb**

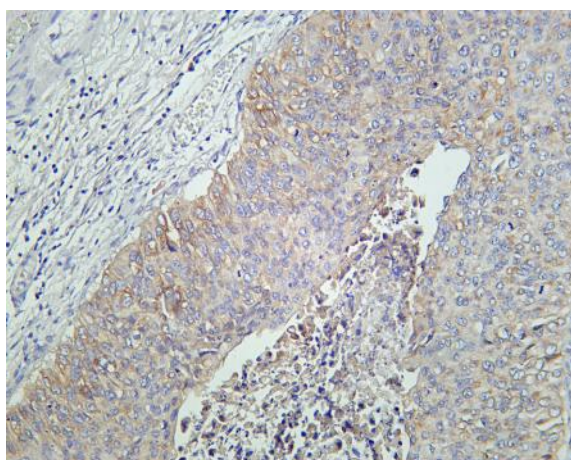
<b>Catalog No :</b>	YM8077
<b>Reactivity :</b>	Human;
<b>Applications :</b>	WB;IHC;IF;IP;ELISA
<b>Target :</b>	IGF-1R
<b>Fields :</b>	>>EGFR tyrosine kinase inhibitor resistance;>>Endocrine resistance;>>MAPK signaling pathway;>>Ras signaling pathway;>>Rap1 signaling pathway;>>HIF-1 signaling pathway;>>FoxO signaling pathway;>>Oocyte meiosis;>>Autophagy - animal;>>Endocytosis;>>mTOR signaling pathway;>>PI3K-Akt signaling pathway;>>AMPK signaling pathway;>>Longevity regulating pathway;>>Longevity regulating pathway - multiple species;>>Focal adhesion;>>Adherens junction;>>Signaling pathways regulating pluripotency of stem cells;>>Long-term depression;>>Ovarian steroidogenesis;>>Progesterone-mediated oocyte maturation;>>Pathways in cancer;>>Transcriptional misregulation in cancer;>>Proteoglycans in cancer;>>Glioma;>>Prostate cancer;>>Melanoma;>>Breast cancer;>>Hepatocellular carcinoma
<b>Gene Name :</b>	IGF1R
<b>Protein Name :</b>	Insulin-like growth factor 1 receptor
<b>Human Gene Id :</b>	3480
<b>Human Swiss Prot No :</b>	P08069
<b>Mouse Gene Id :</b>	16001
<b>Mouse Swiss Prot No :</b>	Q60751
<b>Rat Gene Id :</b>	25718
<b>Rat Swiss Prot No :</b>	P24062
<b>Specificity :</b>	endogenous
<b>Formulation :</b>	PBS, 50% glycerol, 0.05% Proclin 300, 0.05%BSA

<b>Source :</b>	Monoclonal, rabbit, IgG, Kappa
<b>Dilution :</b>	IHC 1:100-200, WB 1:1000-5000, IF 1:200-1000, ELISA 1:5000-20000, IP 1:50-200
<b>Purification :</b>	Protein A
<b>Storage Stability :</b>	-15°C to -25°C/1 year (Do not lower than -25°C)
<b>Molecularweight :</b>	154kD
<b>Observed Band :</b>	200kD
<b>Cell Pathway :</b>	Oocyte meiosis; Endocytosis; Focal adhesion; Adherens_Junction; Long-term depression; Progesterone-mediated oocyte maturation; Pathways in cancer; Colorectal cancer; Glioma; Prostate cancer; Melanoma;
<b>Background :</b>	<p>This receptor binds insulin-like growth factor with a high affinity. It has tyrosine kinase activity. The insulin-like growth factor I receptor plays a critical role in transformation events. Cleavage of the precursor generates alpha and beta subunits. It is highly overexpressed in most malignant tissues where it functions as an anti-apoptotic agent by enhancing cell survival. Alternatively spliced transcript variants encoding distinct isoforms have been found for this gene. [provided by RefSeq, May 2014],</p>
<b>Function :</b>	<p>catalytic activity: ATP + a [protein]-L-tyrosine = ADP + a [protein]-L-tyrosine phosphate., disease: Defects in IGF1R may be a cause in some cases of resistance to insulin-like growth factor 1 (IGF1 resistance) [MIM:270450]. IGF1 resistance is a growth deficiency disorder characterized by intrauterine growth retardation and poor postnatal growth accompanied with increased plasma IGF1., enzyme regulation: Autophosphorylation activates the kinase activity., function: This receptor binds insulin-like growth factor 1 (IGF1) with a high affinity and IGF2 with a lower affinity. It has a tyrosine-protein kinase activity, which is necessary for the activation of the IGF1-stimulated downstream signaling cascade. When present in a hybrid receptor with INSR, binds IGF1. PubMed:12138094 shows that hybrid receptors composed of IGF1R and INSR isoform Long are activated with a high affinity by IGF1, with low a</p>
<b>Subcellular Location :</b>	Membranous
<b>Expression :</b>	Found as a hybrid receptor with INSR in muscle, heart, kidney, adipose tissue, skeletal muscle, hepatoma, fibroblasts, spleen and placenta (at protein level). Expressed in a variety of tissues. Overexpressed in tumors, including melanomas, cancers of the colon, pancreas prostate and kidney.

## Products Images



Various whole cell lysates were separated by 4-20% SDS-PAGE, and the membrane was blotted with anti-IGF1 Receptor (PT0136R) antibody. The HRP-conjugated Goat anti-Rabbit IgG(H + L) antibody was used to detect the antibody. Lane 1: LoVo Lane 2: MCF7 Predicted band size: 154kDa Observed band size: 200kDa



Human bladder carcinoma was stained with Anti-IGF1 Receptor (PT0136R) rabbit antibody