

FGFR1 (PT0155R) PT® Rabbit mAb

| | |
|------------------------------|--|
| Catalog No : | YM8092 |
| Reactivity : | Human; |
| Applications : | WB;IHC;IF;IP;ELISA |
| Target : | FGF Receptor 1 |
| Fields : | >>MAPK signaling pathway;>>Ras signaling pathway;>>Rap1 signaling pathway;>>Calcium signaling pathway;>>PI3K-Akt signaling pathway;>>Adherens junction;>>Signaling pathways regulating pluripotency of stem cells;>>Thermogenesis;>>Regulation of actin cytoskeleton;>>Parathyroid hormone synthesis, secretion and action;>>Pathways in cancer;>>Proteoglycans in cancer;>>Prostate cancer;>>Melanoma;>>Breast cancer;>>Central carbon metabolism in cancer |
| Gene Name : | FGFR1 BFGFR CEK FGFBR FLG FLT2 HBGFR |
| Protein Name : | Fibroblast growth factor receptor 1 |
| Human Gene Id : | 2260 |
| Human Swiss Prot No : | P11362 |
| Mouse Gene Id : | 14182 |
| Mouse Swiss Prot No : | P16092 |
| Rat Gene Id : | 79114 |
| Rat Swiss Prot No : | Q04589 |
| Specificity : | endogenous |
| Formulation : | PBS, 50% glycerol, 0.05% Proclin 300, 0.05%BSA |
| Source : | Monoclonal, rabbit, IgG, Kappa |

Dilution : IHC 1:100-200,WB 1:500-2000,IF 1:200-1000,ELISA 1:5000-20000,IP 1:50-200

Purification : Protein A

Storage Stability : -15°C to -25°C/1 year(Do not lower than -25°C)

Molecularweight : 91kD

Observed Band : 145kD

Cell Pathway : MAPK_ERK_Growth;MAPK_G_Protein;Adherens_Junction;Regulates Actin and Cytoskeleton;Pathways in cancer;Prostate cancer;Melanoma;

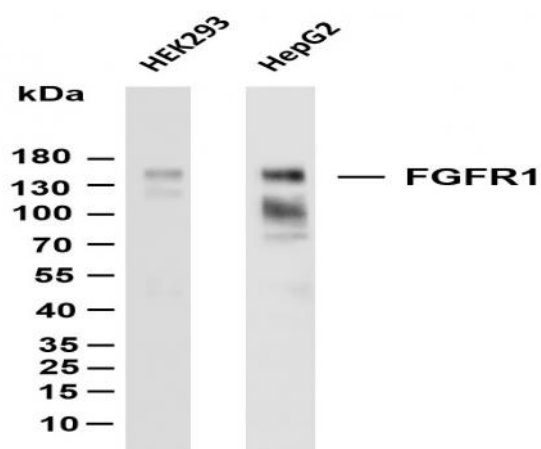
Background : The protein encoded by this gene is a member of the fibroblast growth factor receptor (FGFR) family, where amino acid sequence is highly conserved between members and throughout evolution. FGFR family members differ from one another in their ligand affinities and tissue distribution. A full-length representative protein consists of an extracellular region, composed of three immunoglobulin-like domains, a single hydrophobic membrane-spanning segment and a cytoplasmic tyrosine kinase domain. The extracellular portion of the protein interacts with fibroblast growth factors, setting in motion a cascade of downstream signals, ultimately influencing mitogenesis and differentiation. This particular family member binds both acidic and basic fibroblast growth factors and is involved in limb induction. Mutations in this gene have been associated with Pfeiffer syndrome, Jackson-Weiss syndrome,

Function : catalytic activity:ATP + a [protein]-L-tyrosine = ADP + a [protein]-L-tyrosine phosphate.,disease:A chromosomal aberration involving FGFR1 may be a cause of stem cell leukemia lymphoma syndrome (SCLL). Translocation t(8;13)(p11;q12) with ZMYM2. SCLL usually presents as lymphoblastic lymphoma in association with a myeloproliferative disorder, often accompanied by pronounced peripheral eosinophilia and/or prominent eosinophilic infiltrates in the affected bone marrow.,disease:A chromosomal aberration involving FGFR1 may be a cause of stem cell myeloproliferative disorder (MPD). Translocation t(6;8)(q27;p11) with FGFR1OP. Insertion ins(12;8)(p11;p11p22) with FGFR1OP2. MPD is characterized by myeloid hyperplasia, eosinophilia and T-cell or B-cell lymphoblastic lymphoma. In general it progresses to acute myeloid leukemia. The fusion proteins FGFR1OP2-FGFR1, FGFR1OP-FGFR1 or FGFR1-FGFR1OP may

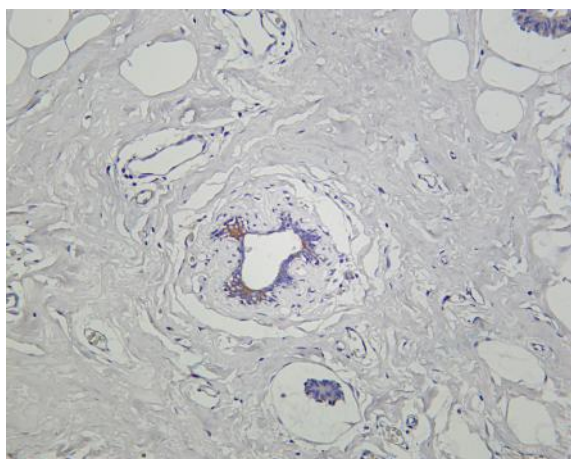
Subcellular Location : Membranous

Expression : Detected in astrocytoma, neuroblastoma and adrenal cortex cell lines. Some isoforms are detected in foreskin fibroblast cell lines, however isoform 17, isoform 18 and isoform 19 are not detected in these cells.

Products Images



Various whole cell lysates were separated by 4-20% SDS-PAGE, and the membrane was blotted with anti-FGFR1 (PT0155R) antibody. The HRP-conjugated Goat anti-Rabbit IgG(H + L) antibody was used to detect the antibody. Lane 1: HEK293 Lane 2: HepG2 Predicted band size: 91kDa Observed band size: 145kDa



Human breast carcinoma was stained with Anti-FGFR1 (PT0155R) rabbit antibody