

## IFNA4 Polyclonal Antibody

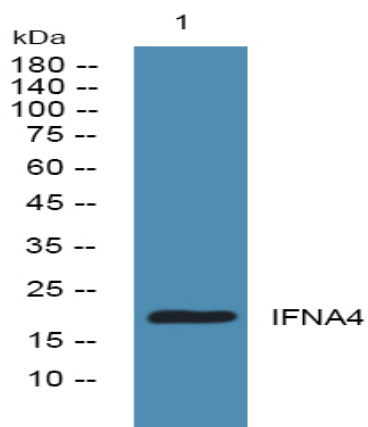
<b>Catalog No :</b>	YN1760
<b>Reactivity :</b>	Human;Mouse
<b>Applications :</b>	WB;ELISA
<b>Target :</b>	IFNA4
<b>Fields :</b>	>>Cytokine-cytokine receptor interaction;>>PI3K-Akt signaling pathway;>>Necroptosis;>>Toll-like receptor signaling pathway;>>NOD-like receptor signaling pathway;>>RIG-I-like receptor signaling pathway;>>Cytosolic DNA-sensing pathway;>>JAK-STAT signaling pathway;>>Natural killer cell mediated cytotoxicity;>>Alcoholic liver disease;>>Tuberculosis;>>Hepatitis C;>>Hepatitis B;>>Measles;>>Human cytomegalovirus infection;>>Influenza A;>>Human papillomavirus infection;>>Kaposi sarcoma-associated herpesvirus infection;>>Herpes simplex virus 1 infection;>>Epstein-Barr virus infection;>>Human immunodeficiency virus 1 infection;>>Coronavirus disease - COVID-19;>>Pathways in cancer;>>Autoimmune thyroid disease;>>Lipid and atherosclerosis
<b>Gene Name :</b>	IFNA4
<b>Protein Name :</b>	Interferon alpha-4 (IFN-alpha-4) (Interferon alpha-4B) (Interferon alpha-76) (Interferon alpha-M1)
<b>Human Gene Id :</b>	3441
<b>Human Swiss Prot No :</b>	P05014
<b>Mouse Swiss Prot No :</b>	P07351
<b>Immunogen :</b>	Synthesized peptide derived from part region of human protein AA range: 87-137
<b>Specificity :</b>	IFNA4 Polyclonal Antibody detects endogenous levels of protein.
<b>Formulation :</b>	Liquid in PBS containing 50% glycerol, and 0.02% sodium azide.
<b>Source :</b>	Polyclonal, Rabbit,IgG

---

<b>Dilution :</b>	WB 1:500-2000 ELISA 1:5000-20000
<b>Purification :</b>	The antibody was affinity-purified from rabbit antiserum by affinity-chromatography using epitope-specific immunogen.
<b>Concentration :</b>	1 mg/ml
<b>Storage Stability :</b>	-15°C to -25°C/1 year(Do not lower than -25°C)
<b>Observed Band :</b>	20kD
<b>Cell Pathway :</b>	Cytokine-cytokine receptor interaction;Regulation of autophagy;Antigen processing and presentation;Toll_Like;RIG-I-like receptor;Cytosolic DNA-sensing pathway;Jak_STAT;Natural killer cell mediated cyt
<b>Background :</b>	function:Produced by macrophages, IFN-alpha have antiviral activities. Interferon stimulates the production of two enzymes: a protein kinase and an oligoadenylate synthetase.,polymorphism:Two forms exist; alpha-4a (shown here) and alpha-4b. They seem to be equally abundant.,similarity:Belongs to the alpha/beta interferon family.,
<b>Function :</b>	function:Produced by macrophages, IFN-alpha have antiviral activities. Interferon stimulates the production of two enzymes: a protein kinase and an oligoadenylate synthetase.,polymorphism:Two forms exist; alpha-4a (shown here) and alpha-4b. They seem to be equally abundant.,similarity:Belongs to the alpha/beta interferon family.,
<b>Subcellular Location :</b>	Secreted.
<b>Expression :</b>	Brain,

---

## Products Images



Western blot analysis of lysates from A431 cells, primary antibody was diluted at 1:1000, 4° over night