

## DKK2 Polyclonal Antibody

<b>Catalog No :</b>	YN2130
<b>Reactivity :</b>	Human;Mouse
<b>Applications :</b>	WB;ELISA
<b>Target :</b>	DKK2
<b>Fields :</b>	>>Wnt signaling pathway;>>Alzheimer disease;>>Pathways of neurodegeneration - multiple diseases
<b>Gene Name :</b>	DKK2 UNQ682/PRO1316
<b>Protein Name :</b>	Dickkopf-related protein 2 (Dickkopf-2) (Dkk-2) (hDkk-2)
<b>Human Gene Id :</b>	27123
<b>Human Swiss Prot No :</b>	Q9UBU2
<b>Mouse Swiss Prot No :</b>	Q9QYZ8
<b>Immunogen :</b>	Synthesized peptide derived from part region of human protein
<b>Specificity :</b>	DKK2 Polyclonal Antibody detects endogenous levels of protein.
<b>Formulation :</b>	Liquid in PBS containing 50% glycerol, and 0.02% sodium azide.
<b>Source :</b>	Polyclonal, Rabbit,IgG
<b>Dilution :</b>	WB 1:500-2000 ELISA 1:5000-20000
<b>Purification :</b>	The antibody was affinity-purified from rabbit antiserum by affinity-chromatography using epitope-specific immunogen.
<b>Concentration :</b>	1 mg/ml
<b>Storage Stability :</b>	-15°C to -25°C/1 year(Do not lower than -25°C)

**Observed Band :** 28kD

**Cell Pathway :** WNT;WNT-T CELL

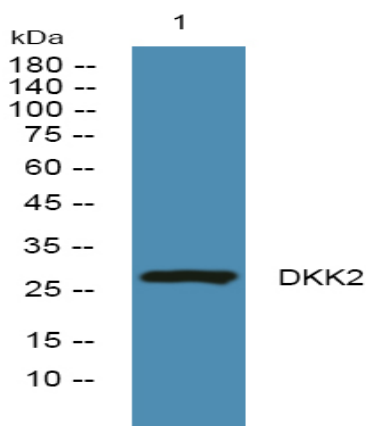
**Background :** This gene encodes a protein that is a member of the dickkopf family. The secreted protein contains two cysteine rich regions and is involved in embryonic development through its interactions with the Wnt signaling pathway. It can act as either an agonist or antagonist of Wnt/beta-catenin signaling, depending on the cellular context and the presence of the co-factor kremen 2. Activity of this protein is also modulated by binding to the Wnt co-receptor LDL-receptor related protein 6 (LRP6). [provided by RefSeq, Jul 2008],

**Function :** function:Inhibitor of Wnt signaling pathway .,PTM:May be proteolytically processed by a furin-like protease.,similarity:Belongs to the dickkopf family.,tissue specificity:Expressed in heart, brain, skeletal muscle and lung.,

**Subcellular Location :** Secreted.

**Expression :** Expressed in heart, brain, skeletal muscle and lung.

## Products Images



Western blot analysis of lysates from DU145 cells, primary antibody was diluted at 1:1000, 4° over night