

ILF2 Polyclonal Antibody

Catalog No :	YN2970
Reactivity :	Human;Mouse;Rat
Applications :	WB;ELISA
Target :	ILF2
Gene Name :	ILF2 NF45 PRO3063
Protein Name :	Interleukin enhancer-binding factor 2 (Nuclear factor of activated T-cells 45 kDa)
Human Gene Id :	3608
Human Swiss Prot No :	Q12905
Mouse Swiss Prot No :	Q9CXY6
Rat Swiss Prot No :	Q7TP98
Immunogen :	Synthesized peptide derived from part region of human protein
Specificity :	ILF2 Polyclonal Antibody detects endogenous levels of protein.
Formulation :	Liquid in PBS containing 50% glycerol, and 0.02% sodium azide.
Source :	Polyclonal, Rabbit,IgG
Dilution :	WB 1:500-2000 ELISA 1:5000-20000
Purification :	The antibody was affinity-purified from rabbit antiserum by affinity-chromatography using epitope-specific immunogen.
Concentration :	1 mg/ml
Storage Stability :	-15°C to -25°C/1 year(Do not lower than -25°C)

Observed Band : 42kD

Background :

The protein encoded by this gene is a transcription factor required for T-cell expression of the interleukin 2 gene. It also binds RNA and is an essential component for encapsidation and protein priming of hepatitis B viral polymerase. The encoded 45 kDa protein (NF45, ILF2) forms a complex with the 90 kDa interleukin enhancer-binding factor 3 (NF90, ILF3), and this complex has been shown to affect the redistribution of nuclear mRNA to the cytoplasm, to repair DNA breaks by nonhomologous end joining, and to negatively regulate the microRNA processing pathway. Knockdown of NF45 or NF90 protein retards cell growth, possibly by inhibition of mRNA stabilization. Alternative splicing results in multiple transcript variants. Related pseudogenes have been found on chromosomes 3 and 14. [provided by RefSeq, Dec 2014],

Function :

function:Appears to function predominantly as a heterodimeric complex with ILF3. This complex may regulate transcription of the IL2 gene during T-cell activation. It can also promote the formation of stable DNA-dependent protein kinase holoenzyme complexes on DNA.,PTM:Phosphorylated upon DNA damage, probably by ATM or ATR.,sequence caution:Chimeric cDNA.,similarity:Contains 1 DZF domain.,subunit:Forms heterodimers with ILF3. ILF2-ILF3 heterodimers may also bind to PRKDC/XRCC7: this may stabilize the interaction of PRKDC/XRCC7 and the heterodimeric complex of G22P1/KU70 and XRCC5/KU80.,

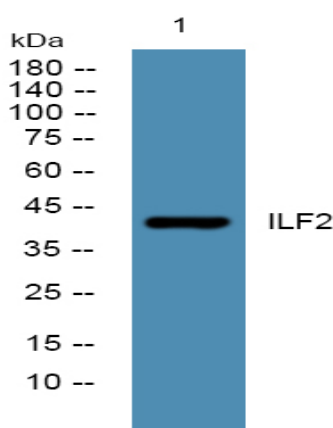
Subcellular Location :

Nucleus, nucleolus. Cytoplasm . Nucleus . Localized in cytoplasmic mRNP granules containing untranslated mRNAs.

Expression :

Fetal liver,Lung,Thymus,

Products Images



Western blot analysis of lysates from DU145 cells, primary antibody was diluted at 1:1000, 4° over night