

CD3G Polyclonal Antibody

Catalog No :	YN2840
Reactivity :	Human;Mouse;Rat
Applications :	WB;ELISA
Target :	CD3G
Fields :	>>Hematopoietic cell lineage;>>Th1 and Th2 cell differentiation;>>Th17 cell differentiation;>>T cell receptor signaling pathway;>>Chagas disease;>>Measles;>>Human T-cell leukemia virus 1 infection;>>Epstein-Barr virus infection;>>Human immunodeficiency virus 1 infection;>>PD-L1 expression and PD-1 checkpoint pathway in cancer
Gene Name :	CD3G T3G
Protein Name :	T-cell surface glycoprotein CD3 gamma chain (T-cell receptor T3 gamma chain) (CD antigen CD3g)
Human Gene Id :	917
Human Swiss Prot No :	P09693
Mouse Swiss Prot No :	P11942
Rat Swiss Prot No :	Q64159
Immunogen :	Synthesized peptide derived from part region of human protein
Specificity :	CD3G Polyclonal Antibody detects endogenous levels of protein.
Formulation :	Liquid in PBS containing 50% glycerol, and 0.02% sodium azide.
Source :	Polyclonal, Rabbit,IgG
Dilution :	WB 1:500-2000 ELISA 1:5000-20000
Purification :	The antibody was affinity-purified from rabbit antiserum by affinity-

chromatography using epitope-specific immunogen.

Concentration : 1 mg/ml

Storage Stability : -15°C to -25°C/1 year(Do not lower than -25°C)

Observed Band : 20kD

Cell Pathway : Hematopoietic cell lineage;T_Cell_Receptor;

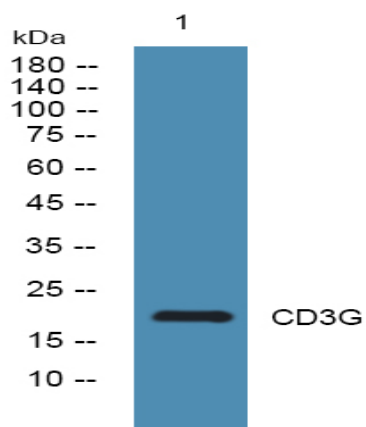
Background : The protein encoded by this gene is the CD3-gamma polypeptide, which together with CD3-epsilon, -delta and -zeta, and the T-cell receptor alpha/beta and gamma/delta heterodimers, forms the T-cell receptor-CD3 complex. This complex plays an important role in coupling antigen recognition to several intracellular signal-transduction pathways. The genes encoding the epsilon, gamma and delta polypeptides are located in the same cluster on chromosome 11. Defects in this gene are associated with T cell immunodeficiency. [provided by RefSeq, Jul 2008],

Function : domain:A di-leucine motif and a tyrosine-based motif are individually sufficient to induce both endocytosis and delivery to lysosomes.,function:The CD3 complex mediates signal transduction.,online information:CD3 receptor entry,online information:CD3G mutation db,similarity:Contains 1 Ig-like (immunoglobulin-like) domain.,similarity:Contains 1 ITAM domain.,subunit:The TCR/CD3 complex of T-lymphocytes consists of either a TCR alpha/beta or TCR gamma/delta heterodimer coexpressed at the cell surface with the invariant subunits of CD3 labeled gamma, delta, epsilon, zeta, and eta.,

Subcellular Location : Cell membrane ; Single-pass type I membrane protein.

Expression : T-cell,Thymus,

Products Images



Western blot analysis of lysates from A431 cells, primary antibody was diluted at 1:1000, 4° over night