

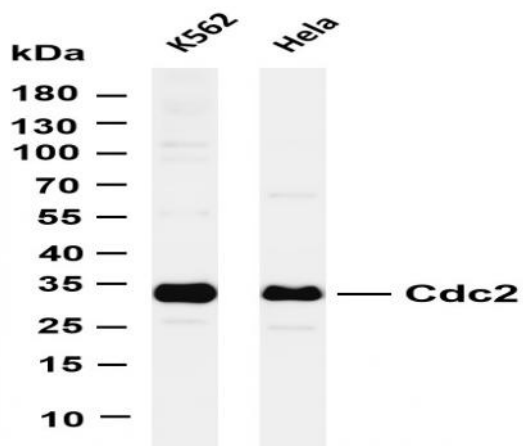
**Cdc2 (PT0406R) PT® Rabbit mAb**

<b>Catalog No :</b>	YM8251
<b>Reactivity :</b>	Human; Mouse;
<b>Applications :</b>	WB;IHC;IF;IP;ELISA
<b>Target :</b>	CDK1/CDC2
<b>Fields :</b>	>>Cell cycle;>>Oocyte meiosis;>>p53 signaling pathway;>>Cellular senescence;>>Gap junction;>>Progesterone-mediated oocyte maturation;>>Human immunodeficiency virus 1 infection;>>Viral carcinogenesis
<b>Gene Name :</b>	CDK1
<b>Protein Name :</b>	Cyclin-dependent kinase 1
<b>Human Gene Id :</b>	983
<b>Human Swiss Prot No :</b>	P06493
<b>Mouse Gene Id :</b>	12534
<b>Mouse Swiss Prot No :</b>	P11440
<b>Rat Gene Id :</b>	54237
<b>Rat Swiss Prot No :</b>	P39951
<b>Specificity :</b>	endogenous
<b>Formulation :</b>	PBS, 50% glycerol, 0.05% Proclin 300, 0.05%BSA
<b>Source :</b>	Monoclonal, rabbit, IgG, Kappa
<b>Dilution :</b>	IHC 1:1000-1:4000;WB 1:2000-1:10000;IF 1:200-1:1000;ELISA 1:5000-1:20000;IP 1:50-1:200;
<b>Purification :</b>	Protein A

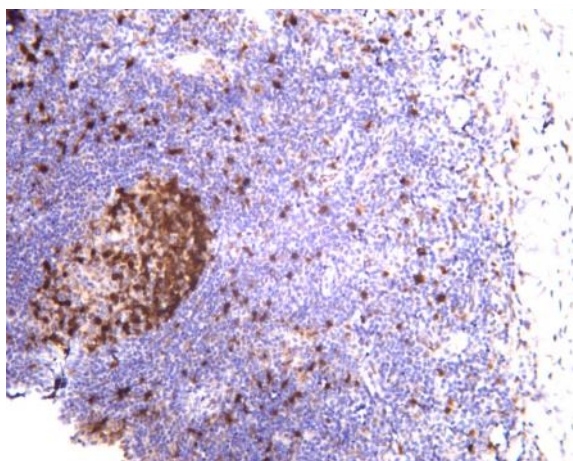
---

<b>Storage Stability :</b>	<u>-15°C to -25°C/1 year(Do not lower than -25°C)</u>
<b>Molecularweight :</b>	<u>34kD</u>
<b>Observed Band :</b>	<u>34kD</u>
<b>Cell Pathway :</b>	<u>Cell_Cycle_G1S;Cell_Cycle_G2M_DNA;Oocyte meiosis;p53;Gap junction;Progesterone-mediated oocyte maturation;</u>
<b>Background :</b>	<u>cyclin dependent kinase 1(CDK1) Homo sapiens The protein encoded by this gene is a member of the Ser/Thr protein kinase family. This protein is a catalytic subunit of the highly conserved protein kinase complex known as M-phase promoting factor (MPF), which is essential for G1/S and G2/M phase transitions of eukaryotic cell cycle. Mitotic cyclins stably associate with this protein and function as regulatory subunits. The kinase activity of this protein is controlled by cyclin accumulation and destruction through the cell cycle. The phosphorylation and dephosphorylation of this protein also play important regulatory roles in cell cycle control. Alternatively spliced transcript variants encoding different isoforms have been found for this gene. [provided by RefSeq, Mar 2009],</u>
<b>Function :</b>	<u>catalytic activity:ATP + [DNA-directed RNA polymerase] = ADP + [DNA-directed RNA polymerase] phosphate.,catalytic activity:ATP + a protein = ADP + a phosphoprotein.,enzyme regulation:Phosphorylation at Thr-14 or Tyr-15 inactivates the enzyme, while phosphorylation at Thr-161 activates it.,function:Plays a key role in the control of the eukaryotic cell cycle. It is required in higher cells for entry into S-phase and mitosis. p34 is a component of the kinase complex that phosphorylates the repetitive C-terminus of RNA polymerase II.,similarity:Belongs to the protein kinase superfamily.,similarity:Belongs to the protein kinase superfamily. CMGC Ser/Thr protein kinase family. CDC2/CDKX subfamily.,similarity:Contains 1 protein kinase domain.,subunit:Forms a stable but non-covalent complex with a regulatory subunit and with a cyclin. Interacts with DLGAP5. Isoform 2 is unable to complex with c</u>
<b>Subcellular Location :</b>	<u>Cytoplasm, Nucleus</u>
<b>Expression :</b>	<u>Isoform 2 is found in breast cancer tissues.</u>

## Products Images



Various whole cell lysates were separated by 4-20% SDS-PAGE, and the membrane was blotted with anti-Cdc2 (PT0406R) antibody. The HRP-conjugated Goat anti-Rabbit IgG(H + L) antibody was used to detect the antibody. Lane 1: K562 Lane 2: HeLa Predicted band size: 34kDa Observed band size: 34kDa



Human tonsil was stained with anti-Cdc2 (PT0406R) rabbit antibody