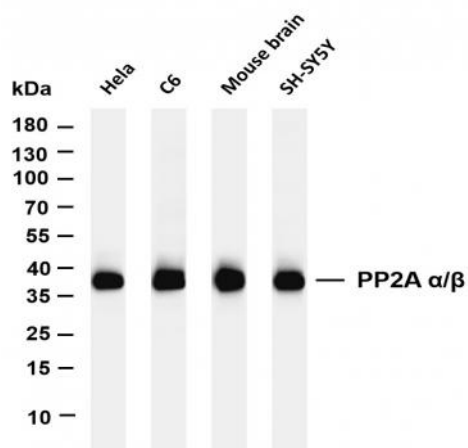


PP2A α/β (PT0421R) PT® Rabbit mAb

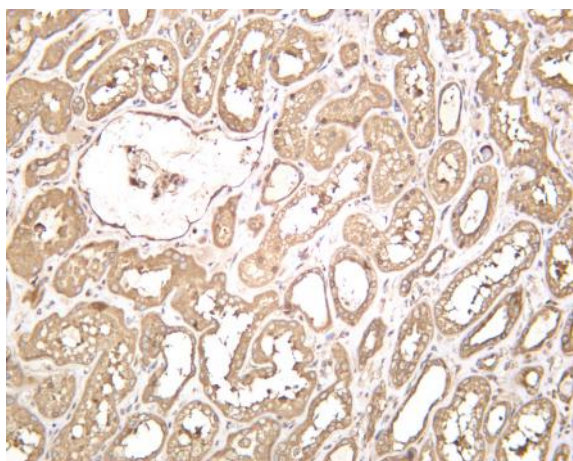
Catalog No :	YM8263
Reactivity :	Human; Mouse; Rat;
Applications :	WB;IHC;IF;IP;ELISA
Target :	PP2A alpha + beta
Fields :	>>mRNA surveillance pathway;>>Sphingolipid signaling pathway;>>Oocyte meiosis;>>Autophagy - other;>>Autophagy - animal;>>PI3K-Akt signaling pathway;>>AMPK signaling pathway;>>Adrenergic signaling in cardiomyocytes;>>TGF-beta signaling pathway;>>Hippo signaling pathway;>>Tight junction;>>Dopaminergic synapse;>>Long-term depression;>>Chagas disease;>>Hepatitis C;>>Human papillomavirus infection
Gene Name :	PPP2CA;PPP2CB
Protein Name :	Serine/threonine-protein phosphatase 2A catalytic subunit alpha isoform;PP2A-beta;PP2A-alpha;Replication protein C;RP-C;
Human Gene Id :	5515;5516
Human Swiss Prot No :	P67775;P62714
Mouse Gene Id :	19052;19053
Mouse Swiss Prot No :	P63330;P62715
Rat Gene Id :	24672;24673
Rat Swiss Prot No :	P63331;P62716
Specificity :	endogenous
Formulation :	PBS, 50% glycerol, 0.05% Proclin 300, 0.05%BSA
Source :	Monoclonal, rabbit, IgG, Kappa

Dilution :	IHC 1:200-1:1000;WB 1:2000-1:10000;IF 1:200-1:1000;ELISA 1:5000-1:20000;IP 1:50-1:200;
Purification :	Protein A
Storage Stability :	-15°C to -25°C/1 year(Do not lower than -25°C)
Molecularweight :	36kD
Observed Band :	36kD
Cell Pathway :	Oocyte meiosis;WNT;WNT-T CELLTGF-beta;Tight junction;Long-term depression;
Background :	This gene encodes the phosphatase 2A catalytic subunit. Protein phosphatase 2A is one of the four major Ser/Thr phosphatases, and it is implicated in the negative control of cell growth and division. It consists of a common heteromeric core enzyme, which is composed of a catalytic subunit and a constant regulatory subunit, that associates with a variety of regulatory subunits. This gene encodes an alpha isoform of the catalytic subunit. [provided by RefSeq, Jul 2008],
Function :	PP2A can modulate the activity of phosphorylase B kinase casein kinase 2, mitogen-stimulated S6 kinase, and MAP-2 kinase. Cooperates with SGOL2 to protect centromeric cohesin from separase-mediated cleavage in oocytes specifically during meiosis I (By similarity). Can dephosphorylate SV40 large T antigen and p53/TP53. Dephosphorylates SV40 large T antigen, preferentially on serine residues 120, 123, 677, and perhaps 679. The C subunit was most active, followed by the AC form, which was more active than the ABC form, and activity of all three forms was strongly stimulated by manganese, and to a lesser extent by magnesium. Dephosphorylation by the AC form, but not C or ABC form is inhibited by small T antigen. Activates RAF1 by dephosphorylating it at 'Ser-259'.
Subcellular Location :	Cytoplasm
Expression :	Fibroblast,Liver,Lung,Placenta,Testis,Uterus,baseline

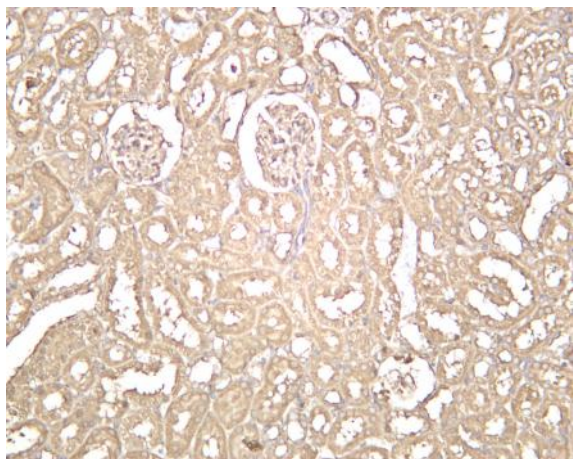
Products Images



Various whole cell lysates were separated by 4-20% SDS-PAGE, and the membrane was blotted with anti-PP2A α/β (PT0421R) antibody. The HRP-conjugated Goat anti-Rabbit IgG(H + L) antibody was used to detect the antibody. Lane 1: HeLa Lane 2: C6 Lane 3: Mouse brain Lane 4: SH-SY5Y Predicted band size: 36kDa Observed band size: 36kDa



Human kidney was stained with anti-PP2A α/β (PT0421R) rabbit antibody



Rat kidney was stained with anti-PP2A α/β (PT0421R) rabbit antibody