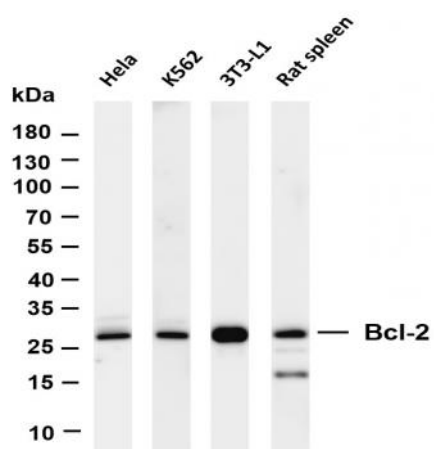


Bcl-2 (PT0487R) PT® Rabbit mAb

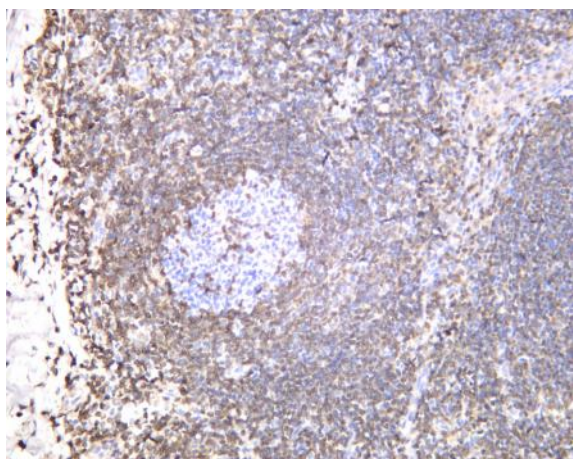
Catalog No :	YM8319
Reactivity :	Human; Mouse; Rat;
Applications :	WB;IHC;IF;IP;ELISA
Target :	Bcl-2
Fields :	>>EGFR tyrosine kinase inhibitor resistance;>>Endocrine resistance;>>Platinum drug resistance;>>NF-kappa B signaling pathway;>>HIF-1 signaling pathway;>>Sphingolipid signaling pathway;>>p53 signaling pathway;>>Autophagy - animal;>>Protein processing in endoplasmic reticulum;>>PI3K-Akt signaling pathway;>>Apoptosis;>>Apoptosis - multiple species;>>Necroptosis;>>Adrenergic signaling in cardiomyocytes;>>Hedgehog signaling pathway;>>Focal adhesion;>>NOD-like receptor signaling pathway;>>JAK-STAT signaling pathway;>>Neurotrophin signaling pathway;>>Cholinergic synapse;>>Estrogen signaling pathway;>>Parathyroid hormone synthesis, secretion and action;>>AGE-RAGE signaling pathway in diabetic complications;>>Amyotrophic lateral sclerosis;>>Pathways of neurodegeneration - multiple diseases;>>Shigellosis;>>Salmonella infection;>>Toxoplasmosis;>>Tuberculosis;>>Hepatitis B;>>Measles;>>Herpes simplex virus 1 infection;>>Epstein-Barr virus infection;>>Human immunodeficiency virus 1 infection;>>Pathw
Gene Name :	BCL2
Protein Name :	Apoptosis regulator Bcl-2
Human Gene Id :	596
Human Swiss Prot No :	P10415
Mouse Gene Id :	12043
Mouse Swiss Prot No :	P10417
Rat Gene Id :	24224
Rat Swiss Prot No :	P49950

Specificity :	endogenous
Formulation :	PBS, 50% glycerol, 0.05% Proclin 300, 0.05%BSA
Source :	Monoclonal, rabbit, IgG, Kappa
Dilution :	IHC 1:500-1:2000;WB 1:2000-1:10000;IF 1:200-1:1000;ELISA 1:5000-1:20000;IP 1:50-1:200;
Purification :	Protein A
Storage Stability :	-15°C to -25°C/1 year(Do not lower than -25°C)
Molecularweight :	26kD
Observed Band :	26kD
Cell Pathway :	Apoptosis_Inhibition;Apoptosis_Mitochondrial;Apoptosis_Overview;Focal adhesion;Neurotrophin;Amyotrophic lateral sclerosis (ALS);Pathways in cancer;Colorectal cancer;Prostate cancer;Small cell lung can
Background :	BCL2, apoptosis regulator(BCL2) Homo sapiens This gene encodes an integral outer mitochondrial membrane protein that blocks the apoptotic death of some cells such as lymphocytes. Constitutive expression of BCL2, such as in the case of translocation of BCL2 to Ig heavy chain locus, is thought to be the cause of follicular lymphoma. Alternative splicing results in multiple transcript variants. [provided by RefSeq, Feb 2016],
Function :	disease:A chromosomal aberration involving BCL2 may be a cause of follicular lymphoma (FL) [MIM:151430]; also known as type II chronic lymphatic leukemia. Translocation t(14;18)(q32;q21) with immunoglobulin gene regions. BCL2 mutations found in non-Hodgkin lymphomas carrying the chromosomal translocation could be attributed to the Ig somatic hypermutation mechanism resulting in nucleotide transitions.,domain:The BH4 motif is required for anti-apoptotic activity and for interaction with RAF-1.,function:Suppresses apoptosis in a variety of cell systems including factor-dependent lymphohematopoietic and neural cells. Regulates cell death by controlling the mitochondrial membrane permeability. Appears to function in a feedback loop system with caspases. Inhibits caspase activity either by preventing the release of cytochrome c from the mitochondria and/or by binding to the apoptosis-activati
Subcellular Location :	Cytoplasm
Expression :	Expressed in a variety of tissues.

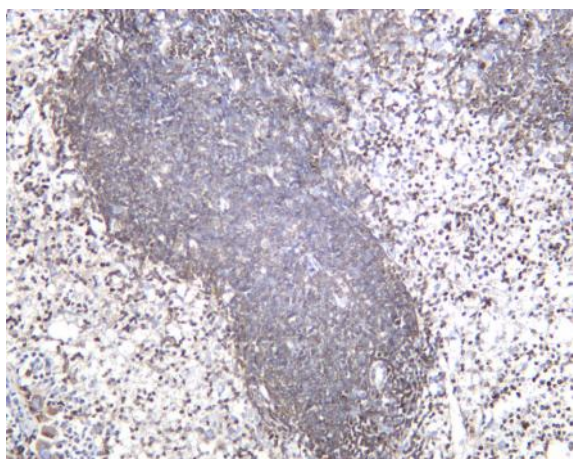
Products Images



Various whole cell lysates were separated by 4-20% SDS-PAGE, and the membrane was blotted with anti-Bcl-2 (PT0487R) antibody. The HRP-conjugated Goat anti-Rabbit IgG(H + L) antibody was used to detect the antibody. Lane 1: HeLa Lane 2: K562 Lane 3: 3T3-L1 Lane 4: Rat spleen Predicted band size: 26kDa Observed band size: 26kDa



Human spleen was stained with anti-Bcl-2 (PT0487R) rabbit antibody



Rat spleen was stained with anti-Bcl-2 (PT0487R) rabbit antibody