

GM130 (PT0159R) PT® Rabbit mAb

Catalog No :	YM8095
Reactivity :	Human; Mouse; Rat;
Applications :	WB;IHC;IF;IP;ELISA
Target :	GM130
Gene Name :	GOLGA2
Protein Name :	GM130
Human Gene Id :	2801
Human Swiss Prot No :	Q08379
Specificity :	endogenous
Formulation :	PBS, 50% glycerol, 0.05% Proclin 300, 0.05%BSA
Source :	Monoclonal, rabbit, IgG, Kappa
Dilution :	IHC 1:200-1:1000;WB 1:2000-1:10000;IF 1:200-1:1000;ELISA 1:5000-1:20000;IP 1:50-1:200;
Purification :	Protein A
Storage Stability :	-15°C to -25°C/1 year(Do not lower than -25°C)
Molecularweight :	113kD
Observed Band :	130kD
Background :	The Golgi apparatus, which participates in glycosylation and transport of proteins and lipids in the secretory pathway, consists of a series of stacked cisternae (flattened membrane sacs). Interactions between the Golgi and microtubules are thought to be important for the reorganization of the Golgi after it fragments during mitosis. This gene encodes one of the golgins, a family of

proteins localized to the Golgi. This encoded protein has been postulated to play roles in the stacking of Golgi cisternae and in vesicular transport. Several alternatively spliced transcript variants of this gene have been described, but the full-length nature of these variants has not been determined. [provided by RefSeq, Feb 2010],

Function :

domain:Extended rod-like protein with coiled-coil domains.,function:Golgi auto-antigen; probably involved in maintaining cis-Golgi structure.,sequence caution:Sequence differs from that shown after position 814 due to an internal deletion.,similarity:Belongs to the GOLGA2 family.,subunit:Part of a larger oligomeric complex. Interacts with p115 (By similarity). Interacts with RAB1B that has been activated by GTP-binding. Interacts with GORASP1/GRASP65 and ZFPL1.,

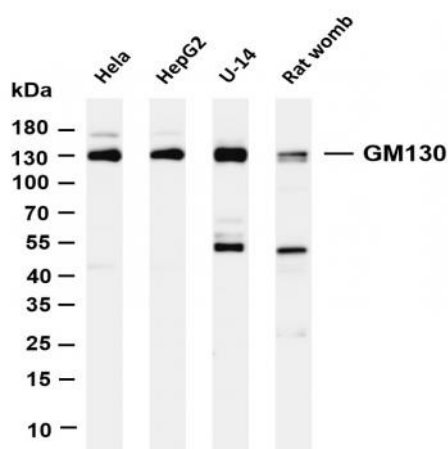
Subcellular Location :

Cytoplasm

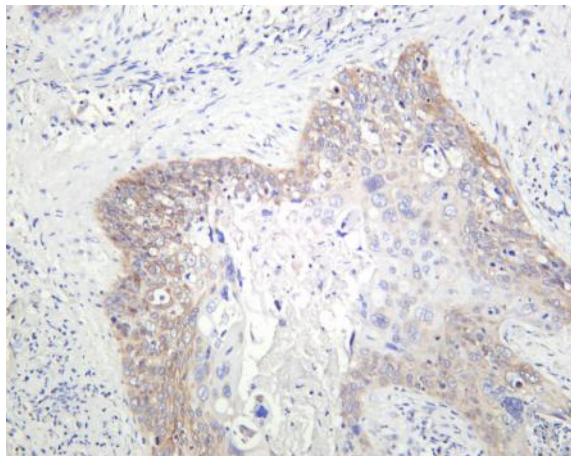
Expression :

Brain,Cervix,Colon adenocarcinoma,Epithelium,Heart,Hepatocyte,Liver,Placenta,Thymus,

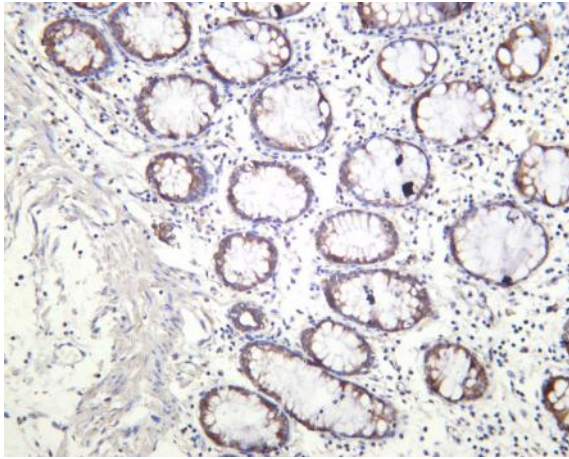
Products Images



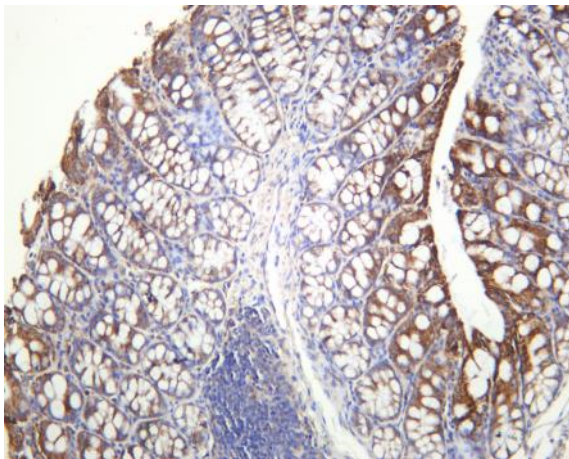
Various whole cell lysates were separated by 4-20% SDS-PAGE, and the membrane was blotted with anti-GM130 (PT0159R) antibody. The HRP-conjugated Goat anti-Rabbit IgG(H + L) antibody was used to detect the antibody. Lane 1: HeLa Lane 2: HepG2 Lane 3: U-14 Lane 4: Rat womb Predicted band size: 113kDa Observed band size: 130kDa



Human cervical carcinoma was stained with anti-GM130 (PT0159R) rabbit antibody



Human colon was stained with anti-GM130 (PT0159R) rabbit antibody



Mouse colon was stained with anti-GM130 (PT0159R) rabbit antibody