

TLR8 Polyclonal Antibody

Catalog No :	YN5448
Reactivity :	Human;Mouse;Rat
Applications :	IHC;IF
Target :	TLR8
Fields :	>>Neutrophil extracellular trap formation;>>Toll-like receptor signaling pathway;>>Coronavirus disease - COVID-19
Gene Name :	TLR8
Protein Name :	Toll-like receptor 8
Human Gene Id :	51311
Human Swiss Prot No :	Q9NR97
Mouse Swiss Prot No :	P58682
Immunogen :	Recombinant Protein of TLR8
Specificity :	The antibody detects endogenous TLR8 protein.
Formulation :	PBS, pH 7.4, containing 0.5%BSA, 0.02% sodium azide as Preservative and 50% Glycerol.
Source :	Polyclonal, Rabbit,IgG
Dilution :	IHC 1:200-500. IF 1:50-200
Purification :	The antibody was affinity-purified from rabbit antiserum by affinity-chromatography using epitope-specific immunogen.
Storage Stability :	-15°C to -25°C/1 year(Do not lower than -25°C)
Cell Pathway :	Toll_Like;

Background :

The protein encoded by this gene is a member of the Toll-like receptor (TLR) family which plays a fundamental role in pathogen recognition and activation of innate immunity. TLRs are highly conserved from *Drosophila* to humans and share structural and functional similarities. They recognize pathogen-associated molecular patterns (PAMPs) that are expressed on infectious agents, and mediate the production of cytokines necessary for the development of effective immunity. The various TLRs exhibit different patterns of expression. This gene is predominantly expressed in lung and peripheral blood leukocytes, and lies in close proximity to another family member, TLR7, on chromosome X. [provided by RefSeq, Jul 2008],

Function :

function:Participates in the innate immune response to microbial agents. Acts via MYD88 and TRAF6, leading to NF-kappa-B activation, cytokine secretion and the inflammatory response.,similarity:Belongs to the Toll-like receptor family.,similarity:Contains 1 TIR domain.,similarity:Contains 24 LRR (leucine-rich) repeats.,subunit:Binds MYD88 via their respective TIR domains.,tissue specificity:Detected in brain, heart, lung, liver, placenta, in monocytes, and at lower levels in CD11c+ immature dendritic cells.,

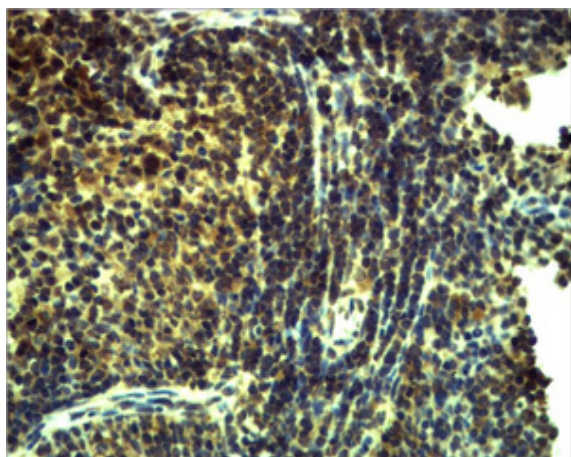
Subcellular Location :

Endosome membrane ; Single-pass type I membrane protein . Endosomal localization confers distinctive proteolytic processing. .

Expression :

Expressed in myeloid dendritic cells, monocytes, and monocyte-derived dendritic cells.

Products Images



Immunohistochemical analysis of paraffin-embedded Mouse Spleen Tissue using TLR8 Polyclonal Antibody.