

CACNG3 Polyclonal Antibody

Catalog No :	YN5651
Reactivity :	Human;Mouse;Rat
Applications :	WB;IHC;IF
Target :	CACNG3
Fields :	>>MAPK signaling pathway;>>Cardiac muscle contraction;>>Adrenergic signaling in cardiomyocytes;>>Oxytocin signaling pathway;>>Hypertrophic cardiomyopathy;>>Arrhythmogenic right ventricular cardiomyopathy;>>Dilated cardiomyopathy
Gene Name :	CACNG3
Protein Name :	Voltage-dependent calcium channel gamma-3 subunit
Human Gene Id :	10368
Human Swiss Prot No :	O60359
Mouse Swiss Prot No :	Q9JJV5
Rat Swiss Prot No :	Q8VHX0
Immunogen :	Synthetic Peptide of CACNG3 AA range: 84-134
Specificity :	The antibody detects endogenous CACNG3 protein.
Formulation :	PBS, pH 7.4, containing 0.5%BSA, 0.02% sodium azide as Preservative and 50% Glycerol.
Source :	Polyclonal, Rabbit,IgG
Dilution :	WB 1:1000-2000 IHC 1:200-500. IF 1:50-200
Purification :	The antibody was affinity-purified from rabbit antiserum by affinity-chromatography using epitope-specific immunogen.

Storage Stability : -15°C to -25°C/1 year(Do not lower than -25°C)

Observed Band : 30kD

Cell Pathway : MAPK_ERK_Growth;MAPK_G_Protein;Cardiac muscle contraction;Hypertrophic cardiomyopathy (HCM);Arrhythmogenic right ventricular cardiomyopathy (ARVC);Dilated cardiomyopathy;

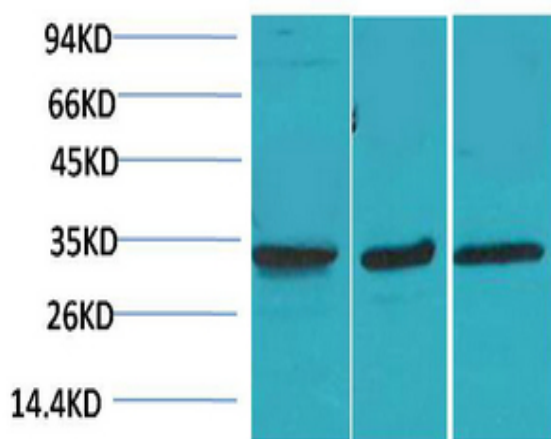
Background : calcium voltage-gated channel auxiliary subunit gamma 3(CACNG3) Homo sapiens The protein encoded by this gene is a type I transmembrane AMPA receptor regulatory protein (TARP). TARPs regulate both trafficking and channel gating of the AMPA receptors. This gene is part of a functionally diverse eight-member protein subfamily of the PMP-22/EMP/MP20 family. This gene is a susceptibility locus for childhood absence epilepsy. [provided by RefSeq, Dec 2010],

Function : disease:Candidate gene for a familial infantile convulsive disorder with paroxysmal choreoathetosis.,function:Thought to stabilize the calcium channel in an inactivated (closed) state.,similarity:Belongs to the PMP-22/EMP/MP20 family. CACNG subfamily.,subunit:The L-type calcium channel is composed of five subunits: alpha-1, alpha-2/delta, beta and gamma.,

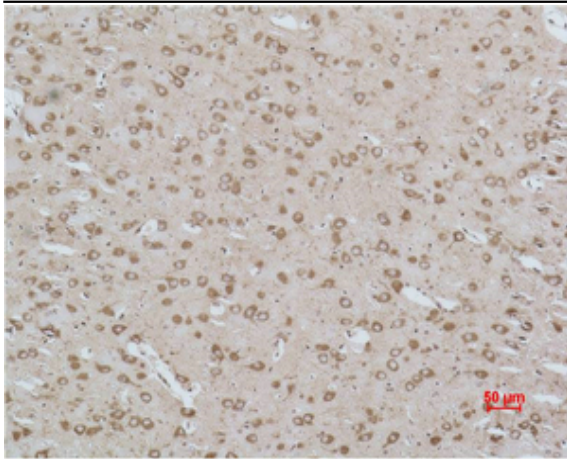
Subcellular Location : Membrane ; Multi-pass membrane protein . Displays a somatodendritic localization and is excluded from axons in neurons. .

Expression : Brain,Brain cortex,Cerebellum,

Products Images



Western blot analysis of 1) Human Brain Tissue, 2) Mouse Brain Tissue, 3) Rat Brain Tissue using CACNG3 Polyclonal Antibody. Secondary antibody(catalog#:RS0002) was diluted at 1:20000



Immunohistochemical analysis of paraffin-embedded Rat Brain Tissue using CACNG3 Polyclonal Antibody.