

Akt3 Polyclonal Antibody

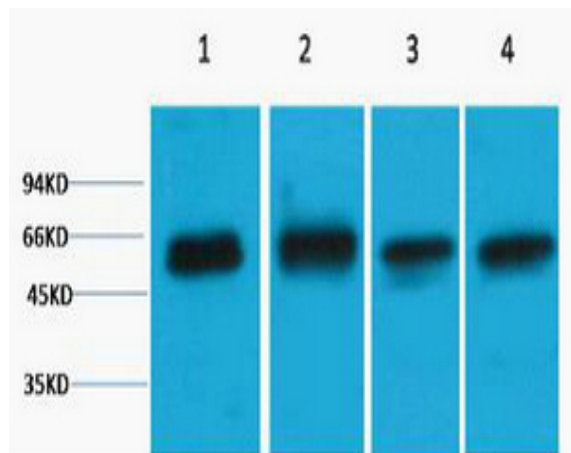
Catalog No :	YN5685
Reactivity :	Human;Mouse;Rat
Applications :	WB
Target :	Akt3
Fields :	>>EGFR tyrosine kinase inhibitor resistance;>>Endocrine resistance;>>Platinum drug resistance;>>MAPK signaling pathway;>>ErbB signaling pathway;>>Ras signaling pathway;>>Rap1 signaling pathway;>>cGMP-PKG signaling pathway;>>cAMP signaling pathway;>>Chemokine signaling pathway;>>HIF-1 signaling pathway;>>FoxO signaling pathway;>>Sphingolipid signaling pathway;>>Phospholipase D signaling pathway;>>Autophagy - animal;>>mTOR signaling pathway;>>PI3K-Akt signaling pathway;>>AMPK signaling pathway;>>Apoptosis;>>Longevity regulating pathway;>>Longevity regulating pathway - multiple species;>>Cellular senescence;>>Adrenergic signaling in cardiomyocytes;>>VEGF signaling pathway;>>Apelin signaling pathway;>>Osteoclast differentiation;>>Focal adhesion;>>Signaling pathways regulating pluripotency of stem cells;>>Platelet activation;>>Neutrophil extracellular trap formation;>>Toll-like receptor signaling pathway;>>C-type lectin receptor signaling pathway;>>JAK-STAT signaling pathway;>>T cell recept
Gene Name :	AKT3
Protein Name :	RAC-gamma serine/threonine-protein kinase
Human Gene Id :	10000
Human Swiss Prot No :	Q9Y243
Mouse Gene Id :	23797
Mouse Swiss Prot No :	Q9WUA6
Rat Gene Id :	29414
Rat Swiss Prot No :	Q63484

Immunogen :	Recombinant Protein of RAC-gamma serine/threonine-protein kinase
Specificity :	The antibody detects endogenous Akt3 protein.
Formulation :	PBS, pH 7.4, containing 0.5%BSA, 0.02% sodium azide as Preservative and 50% Glycerol.
Source :	Polyclonal, Rabbit,IgG
Dilution :	WB 1:1000-2000
Purification :	The antibody was affinity-purified from rabbit antiserum by affinity-chromatography using epitope-specific immunogen.
Storage Stability :	-15°C to -25°C/1 year(Do not lower than -25°C)
Observed Band :	56kD
Cell Pathway :	Akt_PKB;MAPK_ERK_Growth;MAPK_G_Protein;ErbB_HER;Chemokine;mTOR;Apoptosis_Inhibition;Apoptosis_Mitochondrial;Apoptosis_Overview;VEGF;Focal adhesion;Tight junction;Toll_Like;Jak_STAT;T_Cell_Receptor;B_C
Background :	The protein encoded by this gene is a member of the AKT, also called PKB, serine/threonine protein kinase family. AKT kinases are known to be regulators of cell signaling in response to insulin and growth factors. They are involved in a wide variety of biological processes including cell proliferation, differentiation, apoptosis, tumorigenesis, as well as glycogen synthesis and glucose uptake. This kinase has been shown to be stimulated by platelet-derived growth factor (PDGF), insulin, and insulin-like growth factor 1 (IGF1). Alternatively splice transcript variants encoding distinct isoforms have been described. [provided by RefSeq, Jul 2008],
Function :	catalytic activity:ATP + a protein = ADP + a phosphoprotein.,domain:Binding of the PH domain to the phosphatidylinositol 3-kinase alpha (PI(3)K) results in its targeting to the plasma membrane.,enzyme regulation:Two specific sites, one in the kinase domain (Thr-305) and the other in the C-terminal regulatory region (Ser-472), need to be phosphorylated for its full activation.,function:IGF-1 leads to the activation of AKT3, which may play a role in regulating cell survival. Capable of phosphorylating several known proteins. Truncated isoform 2/PKB gamma 1 without the second serine phosphorylation site could still be stimulated but to a lesser extent.,PTM:Phosphorylated upon DNA damage, probably by ATM or ATR.,similarity:Belongs to the protein kinase superfamily.,similarity:Belongs to the protein kinase superfamily. AGC Ser/Thr protein kinase family. RAC subfamily.,similarity:Contains 1 AG
Subcellular	Nucleus . Cytoplasm . Membrane ; Peripheral membrane protein . Membrane-

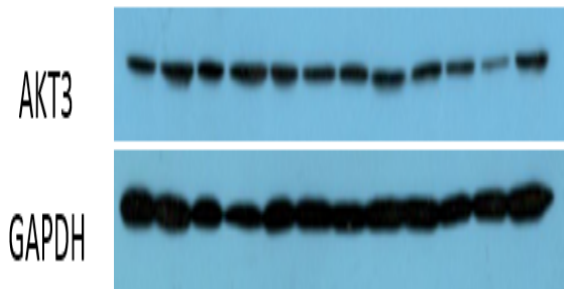
Location : associated after cell stimulation leading to its translocation.

Expression : In adult tissues, it is highly expressed in brain, lung and kidney, but weakly in heart, testis and liver. In fetal tissues, it is highly expressed in heart, liver and brain and not at all in kidney.

Products Images



Western blot analysis of 1) HeLa, 2) 3T3, 3) Mouse Brain, 4) Rat Brain tissue, diluted at 1:2000. Secondary antibody(catalog#:RS0002) was diluted at 1:20000



The picture was kindly provided by our customer. Primary antibody was diluted at 1:5000. Loading control antibody was diluted at 1:20000