

p57kip2 (ABT76R) rabbit mAb

Catalog No :	YM8007
Reactivity :	Human;
Applications :	WB;IHC;ELISA
Target :	p57
Fields :	>>Cell cycle
Gene Name :	CDKN1C
Protein Name :	Cyclin-dependent kinase inhibitor 1C
Human Gene Id :	1028
Human Swiss Prot No :	P49918
Mouse Gene Id :	12577
Mouse Swiss Prot No :	P49919
Immunogen :	Synthesized peptide derived from human protein. AA range:200-316
Specificity :	endogenous
Formulation :	PBS, 50% glycerol, 0.05% Proclin 300, 0.05%BSA
Source :	Monoclonal Rabbit IgG1, Kappa
Dilution :	IHC 1:100-500 WB 1:500-2000 ELISA: 1:20000
Purification :	Protein A
Storage Stability :	-15°C to -25°C/1 year(Do not lower than -25°C)
Molecularweight :	32kD

Cell Pathway : Cell_Cycle_G1S;Cell_Cycle_G2M_DNA;

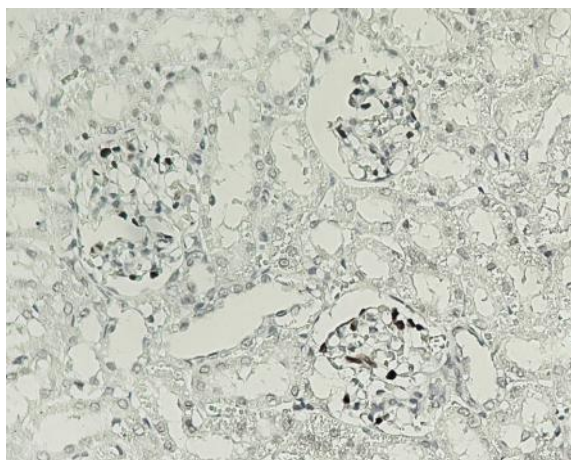
Background : This gene is imprinted, with preferential expression of the maternal allele. The encoded protein is a tight-binding, strong inhibitor of several G1 cyclin/Cdk complexes and a negative regulator of cell proliferation. Mutations in this gene are implicated in sporadic cancers and Beckwith-Wiedemann syndrome, suggesting that this gene is a tumor suppressor candidate. Three transcript variants encoding two different isoforms have been found for this gene. [provided by RefSeq, Oct 2010],

Function : disease:Defects in CDKN1C are a cause of Beckwith-Wiedemann syndrome (BWS) [MIM:130650]. BWS is a genetically heterogeneous disorder characterized by anterior abdominal wall defects including exomphalos (omphalocele), pre- and postnatal overgrowth, and macroglossia. Additional less frequent complications include specific developmental defects and a predisposition to embryonal tumors.,disease:Defects in CDKN1C are involved in tumor formation.,function:Potent tight-binding inhibitor of several G1 cyclin/CDK complexes (cyclin E-CDK2, cyclin D2-CDK4, and cyclin A-CDK2) and, to lesser extent, of the mitotic cyclin B-CDC2. Negative regulator of cell proliferation. May play a role in maintenance of the non-proliferative state throughout life.,similarity:Belongs to the CDI family.,tissue specificity:Expressed in the heart, brain, lung, skeletal muscle, kidney, pancreas and testis. High levels ar

Subcellular Location : Nucleus .

Expression : Expressed in the heart, brain, lung, skeletal muscle, kidney, pancreas and testis. Expressed in the eye. High levels are seen in the placenta while low levels are seen in the liver.

Products Images



Human kidney tissue was stained with Anti-p57kip2 (ABT76R) rabbit Antibody