

CD206 (PTR2276) mouse mAb

Catalog No :	YM4678
Reactivity :	Human; Mouse;
Applications :	WB; ELISA
Target :	CD206
Fields :	>>Phagosome;>>Tuberculosis
Gene Name :	MRC1
Protein Name :	Macrophage mannose receptor 1
Human Gene Id :	4360
Human Swiss Prot No :	P22897
Mouse Gene Id :	17533
Mouse Swiss Prot No :	Q61830
Specificity :	Synthesized peptide derived from human CD206.AA range:750-850
Formulation :	PBS, 50% glycerol, 0.05% Proclin 300, 0.05%BSA
Source :	Mouse, Monoclonal/IgG1,kappa
Dilution :	WB 1:500-2000, ELISA 1:5000-20000
Purification :	Protein G
Storage Stability :	-15°C to -25°C/1 year(Do not lower than -25°C)
Molecularweight :	166kD
Observed Band :	190kD

Background :

The recognition of complex carbohydrate structures on glycoproteins is an important part of several biological processes, including cell-cell recognition, serum glycoprotein turnover, and neutralization of pathogens. The protein encoded by this gene is a type I membrane receptor that mediates the endocytosis of glycoproteins by macrophages. The protein has been shown to bind high-mannose structures on the surface of potentially pathogenic viruses, bacteria, and fungi so that they can be neutralized by phagocytic engulfment.[provided by RefSeq, Sep 2015],

Function :

function:Mediates the endocytosis of glycoproteins by macrophages. Binds both sulfated and non-sulfated polysaccharide chains. Acts as phagocytic receptor for bacteria, fungi and other pathogens.,miscellaneous:CRDs 1-3 have at most very weak affinity for carbohydrate. CRD 4 shows the highest affinity binding and has multispecificity for a variety of monosaccharides. At least 3 CRDs (4, 5, and 7) are required for high affinity binding and endocytosis of multivalent glycoconjugates.,online information:Macrophage mannose receptor,similarity:Contains 1 fibronectin type-II domain.,similarity:Contains 1 ricin B-type lectin domain.,similarity:Contains 8 C-type lectin domains.,

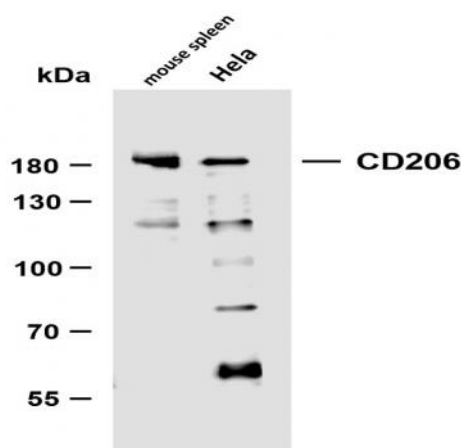
Subcellular Location :

Endosome membrane ; Single-pass type I membrane protein . Cell membrane ; Single-pass type I membrane protein .

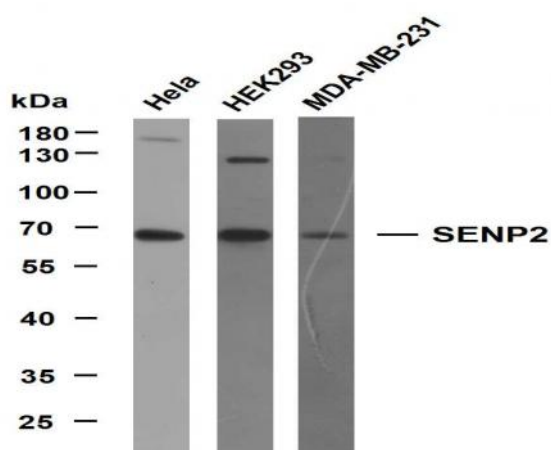
Expression :

Milk,Placenta,Testis,

Products Images



Various whole cell lysates were separated by 8% SDS-PAGE, and the membrane was blotted with anti-CD206 (PTR2276) antibody. The HRP-conjugated Goat anti-Mouse IgG(H + L) antibody was used to detect the antibody. Lane 1: mouse spleen Lane 2: HeLa Predicted band size: 166kDa Observed band size: 190kDa



Various whole cell lysates were separated by 10% SDS-PAGE, and the membrane was blotted with anti-SENP2 antibody. The HRP-conjugated Goat anti-Mouse IgG(H + L) antibody was used to detect the antibody. Lane 1: HeLa Lane 2: HEK293 Lane 3: MDA-MB-231 Predicted band size: 68kDa Observed band size: 65kDa