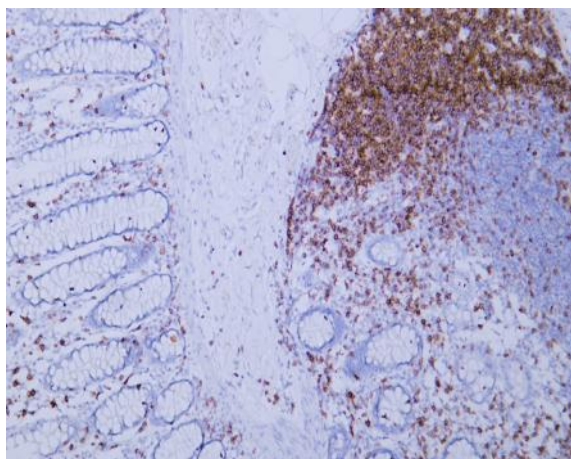


CD5 (ABT-CD5) mouse mAb (Ready to Use)

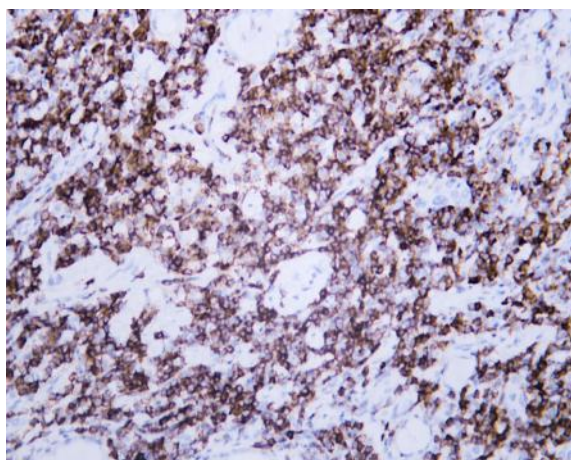
| | |
|------------------------------|--|
| Catalog No : | YM6286R |
| Reactivity : | Human; |
| Applications : | IHC |
| Target : | CD5 |
| Fields : | >>Hematopoietic cell lineage |
| Gene Name : | CD5 LEU1 |
| Protein Name : | T-cell surface glycoprotein CD5 (Lymphocyte antigen T1/Leu-1) (CD antigen CD5) |
| Human Gene Id : | 921 |
| Human Swiss Prot No : | P06127 |
| Immunogen : | Synthesized peptide derived from human CD5 AA range: 200-300 |
| Specificity : | The antibody can specifically recognize human CD5 protein. |
| Formulation : | The prediluted ready-to-use antibody is diluted in phosphate buffer saline containing stabilizing protein and 0.05% Proclin 300 |
| Source : | Mouse, Monoclonal/IgG2a, kappa |
| Dilution : | Ready to use for IHC |
| Purification : | The antibody was affinity-purified from ascites by affinity-chromatography using specific immunogen. |
| Storage Stability : | 2°C to 8°C/1 year |
| Background : | function:May act as a receptor in regulating T-cell proliferation. CD5 interacts with CD72/LYB-2.,similarity:Contains 3 SRCR domains., |

| | |
|-------------------------------|--|
| Function : | function:May act as a receptor in regulating T-cell proliferation. CD5 interacts with CD72/LYB-2.,similarity:Contains 3 SRCR domains., |
| Subcellular Location : | Membranous |
| Expression : | Lymphocyte,Pancreas,Tonsil, |

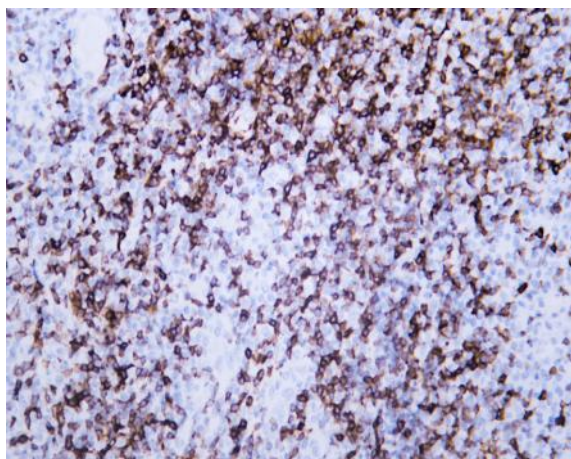
Products Images



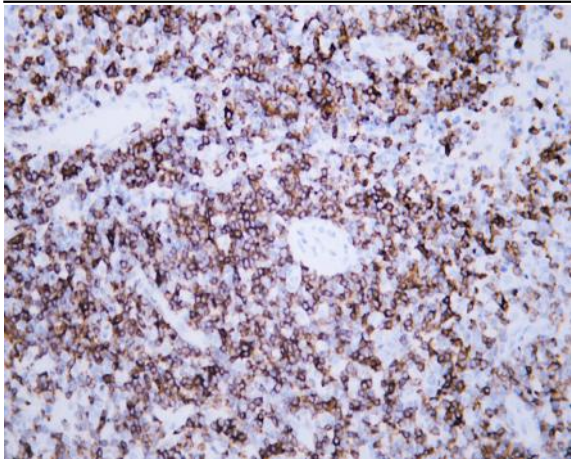
Human colon tissue was stained with Anti-CD5 (ABT-CD5) Antibody



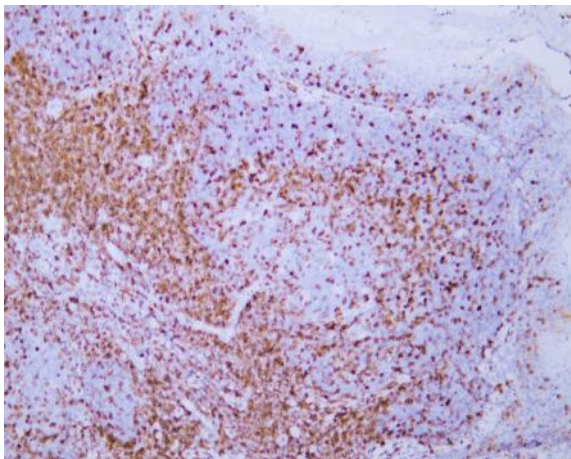
Human lymphoma tissue was stained with Anti-CD5 (ABT-CD5) Antibody



Human lymphoma tissue was stained with Anti-CD5 (ABT-CD5) Antibody



Human lymphoma tissue was stained with Anti-CD5 (ABT-CD5) Antibody



Human tonsil tissue was stained with Anti-CD5 (ABT-CD5) Antibody