

Parathyroid Hormone (PTH) (ABT-PTH) mouse mAb (Ready to Use)

Catalog No :	YM6471R
Reactivity :	Human;
Applications :	IHC
Target :	Parathyroid Hormone
Fields :	>>Neuroactive ligand-receptor interaction;>>Parathyroid hormone synthesis, secretion and action;>>Endocrine and other factor-regulated calcium reabsorption;>>Rheumatoid arthritis
Gene Name :	PTH
Protein Name :	Parathyroid hormone (PTH) (Parathormone) (Parathyrin)
Human Gene Id :	5741
Human Swiss Prot No :	P01270
Immunogen :	Synthesized peptide derived from human Parathyroid Hormone (PTH) AA range: 50-115
Specificity :	The antibody can specifically recognize human Parathyroid Hormone protein.
Formulation :	The prediluted ready-to-use antibody is diluted in phosphate buffer saline containing stabilizing protein and 0.05% Proclin 300
Source :	Mouse, Monoclonal/IgG1, kappa
Dilution :	Ready to use for IHC
Purification :	The antibody was affinity-purified from ascites by affinity-chromatography using specific immunogen.
Storage Stability :	2°C to 8°C/1 year
Background :	This gene encodes a member of the parathyroid family of proteins. The encoded

preproprotein is proteolytically processed to generate a protein that binds to the parathyroid hormone/parathyroid hormone-related peptide receptor and regulates blood calcium and phosphate levels. Excess production of the encoded protein, known as hyperparathyroidism, can result in hypercalcemia and kidney stones. On the other hand, defective processing of the encoded protein may lead to hypoparathyroidism, which can result in hypocalcemia and numbness. Alternative splicing results in multiple transcript variants. [provided by RefSeq, Oct 2015],

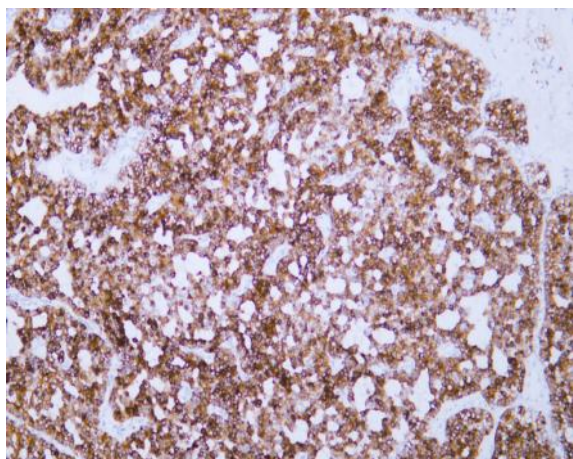
Function :

disease:Defects in PTH are a cause of familial isolated hypoparathyroidism (FIH) [MIM:146200]. FIH exist both as autosomal dominant and recessive forms of hypoparathyroidism.,function:PTH elevates calcium level by dissolving the salts in bone and preventing their renal excretion.,online information:Parathyroid hormone entry,similarity:Belongs to the parathyroid hormone family.,

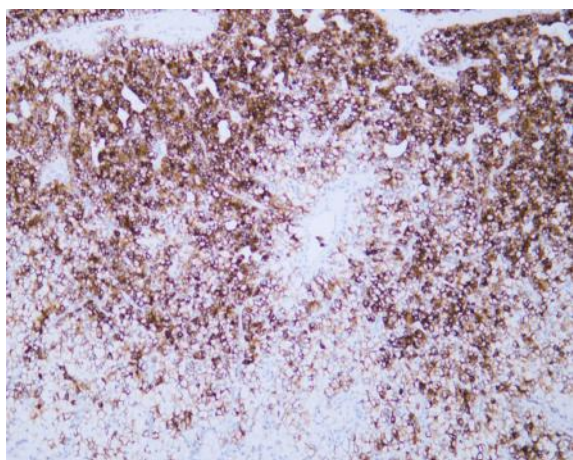
Subcellular Location :

Cytoplasmic, Membranous

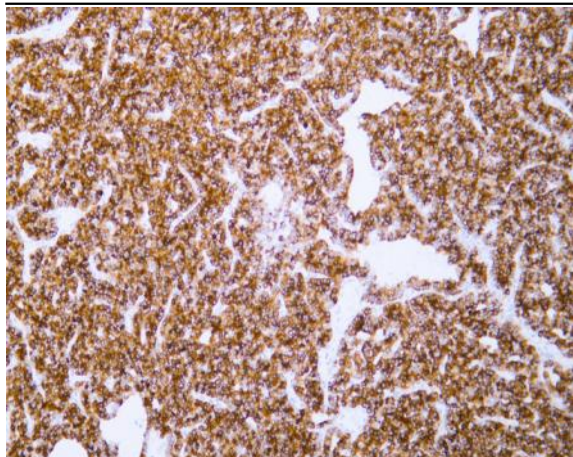
Products Images



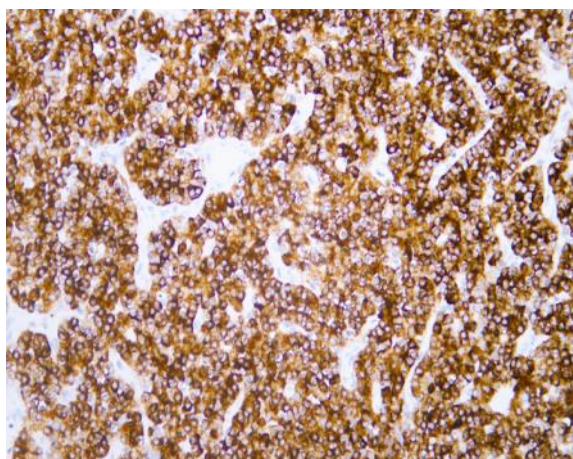
Human parathyroidoma tissue was stained with Anti-Parathyroid Hormone (ABT-PTH) Antibody



Human parathyroidoma tissue was stained with Anti-Parathyroid Hormone (ABT-PTH) Antibody



Human parathyroidoma tissue was stained with Anti-Parathyroid Hormone (ABT-PTH) Antibody



Human parathyroidoma tissue was stained with Anti-Parathyroid Hormone (ABT-PTH) Antibody