

BCL-2 (PTR2303) Mouse mAb

Catalog No :	YM3041
Reactivity :	Human; Mouse; Rat;
Applications :	WB
Target :	Bcl-2
Fields :	>>EGFR tyrosine kinase inhibitor resistance;>>Endocrine resistance;>>Platinum drug resistance;>>NF-kappa B signaling pathway;>>HIF-1 signaling pathway;>>Sphingolipid signaling pathway;>>p53 signaling pathway;>>Autophagy - animal;>>Protein processing in endoplasmic reticulum;>>PI3K-Akt signaling pathway;>>Apoptosis;>>Apoptosis - multiple species;>>Necroptosis;>>Adrenergic signaling in cardiomyocytes;>>Hedgehog signaling pathway;>>Focal adhesion;>>NOD-like receptor signaling pathway;>>JAK-STAT signaling pathway;>>Neurotrophin signaling pathway;>>Cholinergic synapse;>>Estrogen signaling pathway;>>Parathyroid hormone synthesis, secretion and action;>>AGE-RAGE signaling pathway in diabetic complications;>>Amyotrophic lateral sclerosis;>>Pathways of neurodegeneration - multiple diseases;>>Shigellosis;>>Salmonella infection;>>Toxoplasmosis;>>Tuberculosis;>>Hepatitis B;>>Measles;>>Herpes simplex virus 1 infection;>>Epstein-Barr virus infection;>>Human immunodeficiency virus 1 infection;>>Pathw
Gene Name :	BCL2
Protein Name :	Apoptosis regulator Bcl-2
Human Gene Id :	596
Human Swiss Prot No :	P10415
Mouse Gene Id :	12043
Mouse Swiss Prot No :	P10417
Rat Gene Id :	24224
Rat Swiss Prot No :	P49950

Immunogen :	Synthetic Peptide of human Bcl-2 AA range: 1-100
Specificity :	The antibody detects endogenous Bcl-2 proteins.
Formulation :	PBS, pH 7.4, containing 0.5%BSA, 0.02% sodium azide as Preservative and 50% Glycerol.
Source :	Monoclonal, Mouse IgG2b, Kappa
Dilution :	WB 1:1000-2000
Purification :	The antibody was affinity-purified from mouse ascites by affinity-chromatography using specific immunogen.
Concentration :	0.73mg/mL
Storage Stability :	-15°C to -25°C/1 year(Do not lower than -25°C)
Molecularweight :	26kD
Observed Band :	26kD
Cell Pathway :	Apoptosis_Inhibition;Apoptosis_Mitochondrial;Apoptosis_Overview;Focal adhesion;Neurotrophin;Amyotrophic lateral sclerosis (ALS);Pathways in cancer;Colorectal cancer;Prostate cancer;Small cell lung can
Background :	BCL2, apoptosis regulator(BCL2) Homo sapiens This gene encodes an integral outer mitochondrial membrane protein that blocks the apoptotic death of some cells such as lymphocytes. Constitutive expression of BCL2, such as in the case of translocation of BCL2 to Ig heavy chain locus, is thought to be the cause of follicular lymphoma. Alternative splicing results in multiple transcript variants. [provided by RefSeq, Feb 2016],
Function :	disease:A chromosomal aberration involving BCL2 may be a cause of follicular lymphoma (FL) [MIM:151430]; also known as type II chronic lymphatic leukemia. Translocation t(14;18)(q32;q21) with immunoglobulin gene regions. BCL2 mutations found in non-Hodgkin lymphomas carrying the chromosomal translocation could be attributed to the Ig somatic hypermutation mechanism resulting in nucleotide transitions.,domain:The BH4 motif is required for anti-apoptotic activity and for interaction with RAF-1.,function:Suppresses apoptosis in a variety of cell systems including factor-dependent lymphohematopoietic and neural cells. Regulates cell death by controlling the mitochondrial membrane permeability. Appears to function in a feedback loop system with caspases. Inhibits caspase activity either by preventing the release of cytochrome c from the mitochondria and/or by binding to the apoptosis-activati

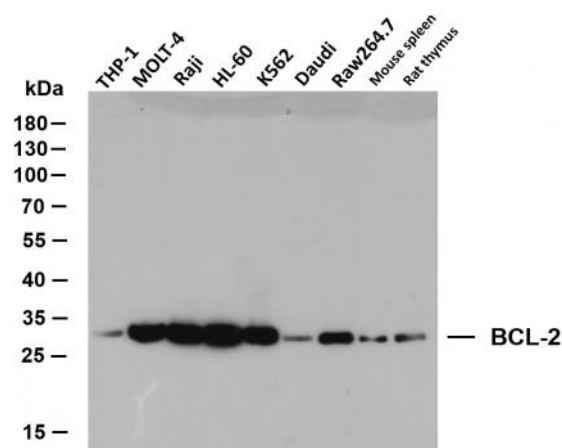
Subcellular Location :

Mitochondrion outer membrane ; Single-pass membrane protein . Nucleus membrane ; Single-pass membrane protein . Endoplasmic reticulum membrane ; Single-pass membrane protein . Cytoplasm .

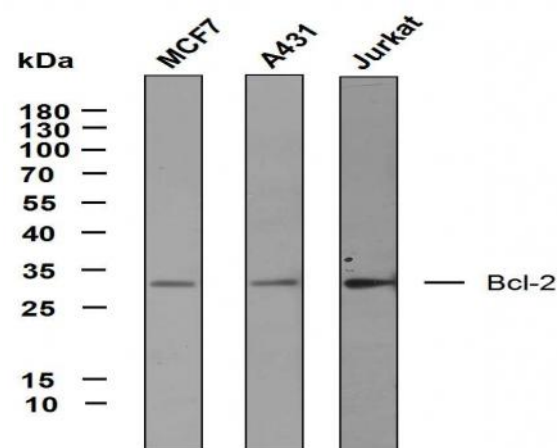
Expression :

Expressed in a variety of tissues.

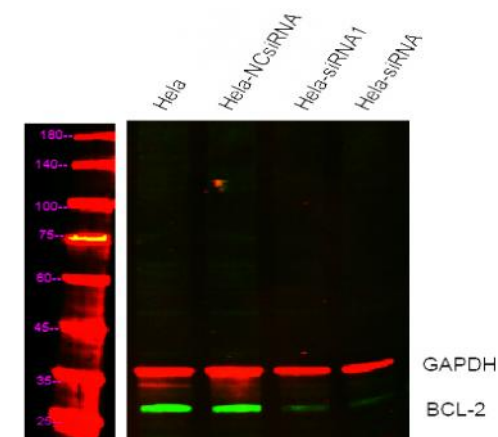
Products Images



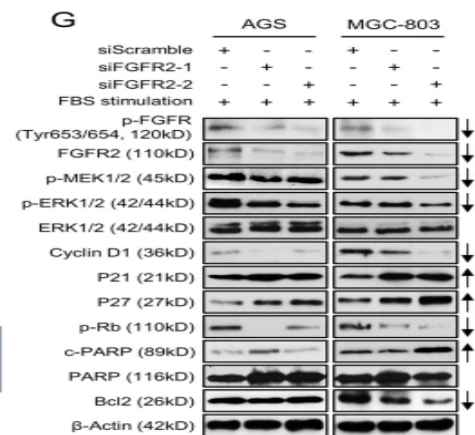
Various whole cell lysates were separated by 10% SDS-PAGE, and the membrane was blotted with anti-BCL-2(PTR2303)antibody. The HRP-conjugated Goat anti-Mouse IgG(H + L) antibody was used to detect the antibody. Lane 1: THP-1 Lane 2: MOLT-4 Lane 3: Raji Lane 4: HL-60 Lane 5: K562 Lane 6: Daudi Lane 7: Raw264.7 Lane 8: Mouse spleen Lane 9: Rat thymus Predicted band size: 26kDa Observed band size: 26kDa



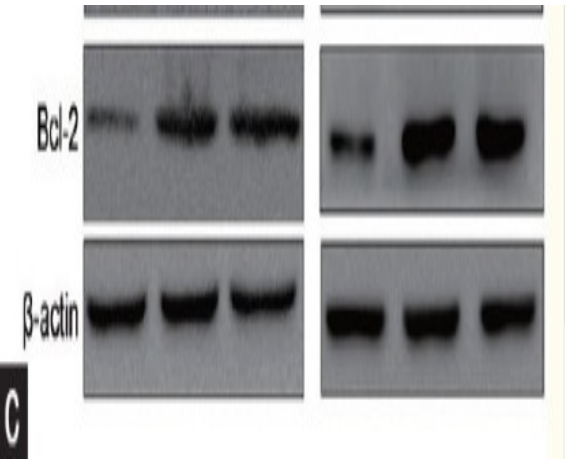
Various whole cell lysates were separated by 8% SDS-PAGE, and the membrane was blotted with anti-SMMHC (PT0614) antibody. The HRP-conjugated anti-Mouse IgG antibody was used to detect the antibody. Lane 1: MCF7 Lane 2: A431 Lane 3: Jurkat Predicted band size: 26kDa Observed band size: 26kDa



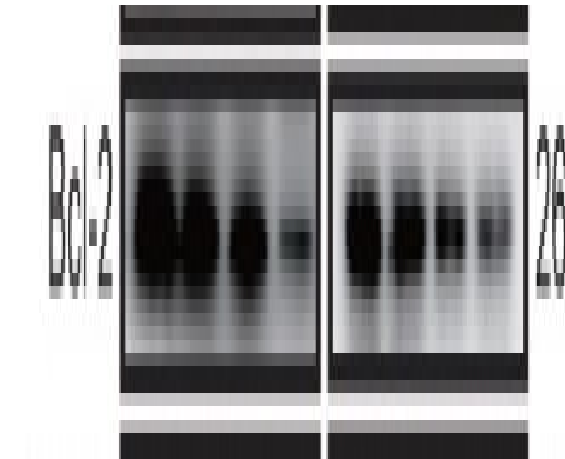
Western blot analysis of lysates from 1)HeLa cell , 2)HeLa cells knockdown by siRNA1 (F:GGAUGACUGAGUACCUGAATT,R:UUCAGGUACUCAGUC AUCCTT) siRNA2(F:GUGAUGAAGUACAUCUUAU,R:AUAAUGGAUG UACUUCAUCAC), (Green) primary antibody was diluted at 1:1000, 4° over night, Dylight 800 secondary antibody(Immunoway:RS23910)was diluted at 1:10000, 37° 1 hour. (Red) GAPDH rabbit (Immunoway:YN5585) antibody was diluted at 1:5000 as loading control, 4° over night, Dylight 680 secondary antibody(Immunoway:RS23720)was diluted at 1:10000, 37° 1 hour.



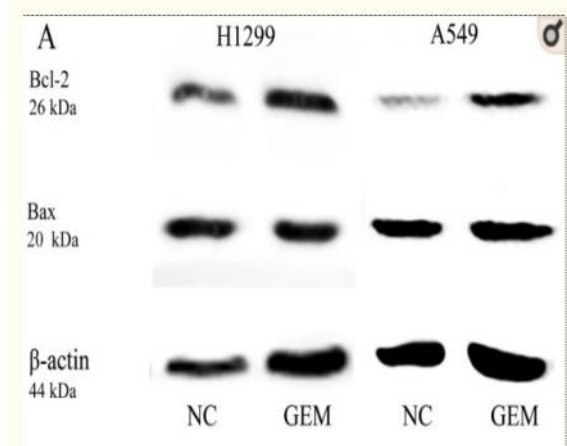
Zhang, J., Wong, C.C., Leung, K.T. et al. FGF18-FGFR2 signaling triggers the activation of c-Jun-YAP1 axis to promote carcinogenesis in a subgroup of gastric cancer patients and indicates translational potential. *Oncogene* 39, 6647-6663 (2020).



Wen, Yao-An, et al. "Phosphoglycerate mutase 1 knockdown inhibits prostate cancer cell growth, migration, and invasion." *Asian journal of andrology* 20.2 (2018): 178.

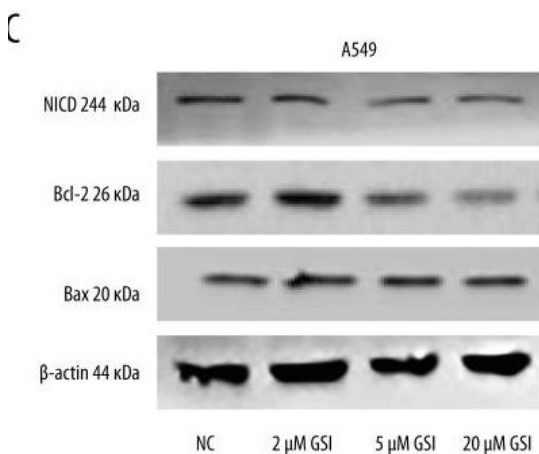
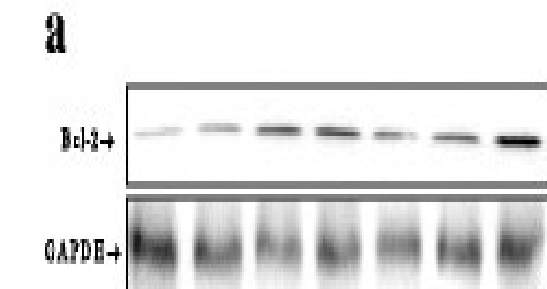


Tao, Yuquan, et al. "Huaier Augmented the Chemotherapeutic Sensitivity of Oxaliplatin via Downregulation of YAP in Hepatocellular Carcinoma." *Journal of Cancer* 9.21 (2018): 3962.

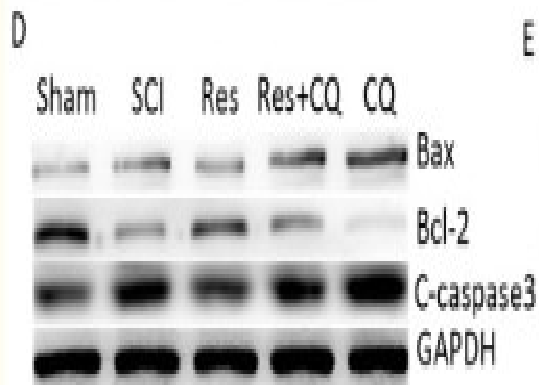


Hu, Bi-Dan, et al. "Specific inhibitor of Notch-3 enhances the sensitivity of NSCLC cells to gemcitabine." *Oncology reports* 40.1 (2018): 155-164.

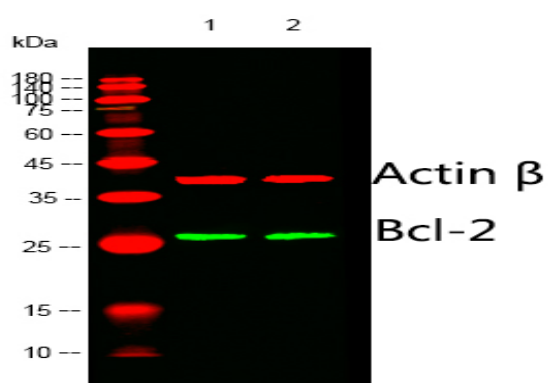
Yu, Xiao, et al. "The modified Yi qi decoction protects cardiac ischemia-reperfusion induced injury in rats." *BMC complementary and alternative medicine* 17.1 (2017): 330.



He, Fenglian, et al. "Synergistic effect of Notch-3-specific inhibition and paclitaxel in non-small cell lung cancer (NSCLC) cells via activation of the intrinsic apoptosis pathway." *Medical science monitor: international medical journal of experimental and clinical research* 23 (2017): 3760.



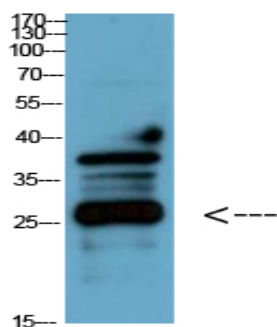
Wang, Peng, et al. "Resveratrol ameliorates autophagic flux to promote functional recovery in rats after spinal cord injury." *Oncotarget* 9.9 (2018): 8427.



Western blot analysis of lysates from 1) HeLa, 2) MCF-7 cells, (Green) primary antibody was diluted at 1:1000, 4° over night, secondary antibody (Immunoway:RS23910) was diluted at 1:10000, 37° 1 hour. (Red) Actin β Polyclonal Antibody (Immunoway:YT0099) antibody was diluted at 1:5000 as loading control, 4° over night, Dylight 680 secondary antibody (Immunoway:RS23720) was diluted at 1:10000, 37° 1 hour.

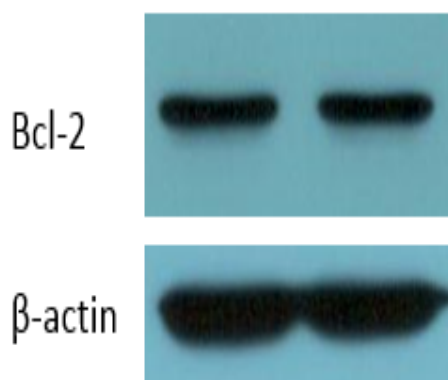
The picture was kindly provided by our customer





chicken cell lysis

Western Blot analysis of chicken cell lysis using Antibody diluted at 1:1000



The picture was kindly provided by our customer. Primary antibody was diluted at 1:2000. Loading control antibody was diluted at 1:5000