

CD20 (ABT065) mouse mAb (Ready to Use)

Catalog No :	YM6832R
Reactivity :	Human;
Applications :	IHC
Target :	CD20
Fields :	>>Hematopoietic cell lineage
Gene Name :	MS4A1 CD20
Protein Name :	CD20
Human Gene Id :	931
Human Swiss Prot No :	P11836
Immunogen :	Synthesized peptide derived from human CD20 AA range: 200-297
Specificity :	The antibody can specifically recognize human CD20 protein.
Formulation :	The prediluted ready-to-use antibody is diluted in phosphate buffer saline containing stabilizing protein and 0.05% Proclin 300
Source :	Mouse, Monoclonal/IgG1, kappa
Dilution :	Ready to use for IHC
Purification :	The antibody was affinity-purified from ascites by affinity-chromatography using specific immunogen.
Storage Stability :	2°C to 8°C/1 year
Background :	This gene encodes a member of the membrane-spanning 4A gene family. Members of this nascent protein family are characterized by common structural features and similar intron/exon splice boundaries and display unique expression patterns among hematopoietic cells and nonlymphoid tissues. This gene encodes

a B-lymphocyte surface molecule which plays a role in the development and differentiation of B-cells into plasma cells. This family member is localized to 11q12, among a cluster of family members. Alternative splicing of this gene results in two transcript variants which encode the same protein. [provided by RefSeq, Jul 2008],

Function :

caution:Epitope 1, mapped in PubMed:16785532, is predicted to be buried in the membrane. Its accessibility to the extracellular space, and thus to antibody recognition, is not explained.,function:This protein may be involved in the regulation of B-cell activation and proliferation.,online information:CD20 entry,pharmaceutical:Monoclonal antibodies(mAb) against CD20 are used to treat B-cell non-Hodgkin's lymphoma (NHL). These antibodies include Rituximab (Mabthera), Britumomab (Zevalin) and Tositumomab (Bexxar). CD20 engaged by mAb can generate transmembrane signals capable of directly controlling cell growth and triggering cell death in certain tumors. Alternatively, mAb can mediate complement-dependent cytotoxicity.,PTM:Phosphorylated. Might be functionally regulated by protein kinase(s).,similarity:Belongs to the MS4A family.,tissue specificity:Expressed on B-cells.,

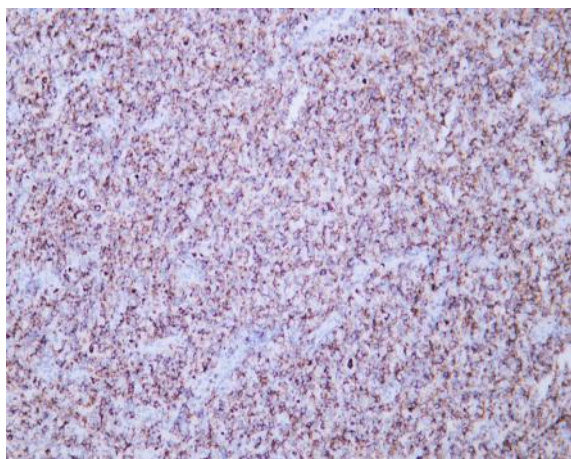
Subcellular Location :

Membranous

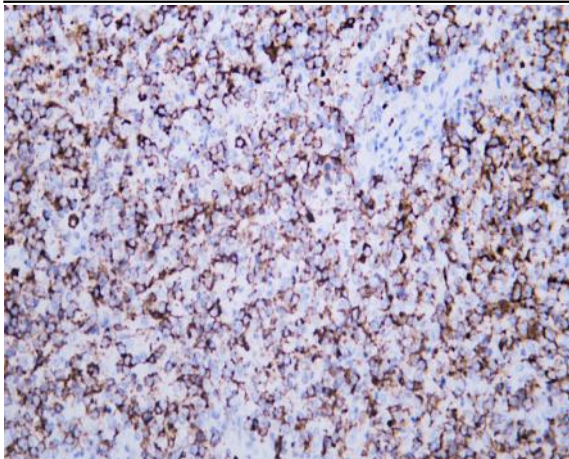
Expression :

Expressed on B-cells.

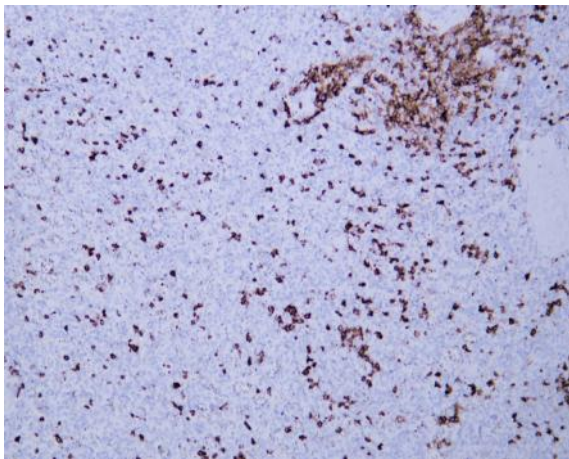
Products Images



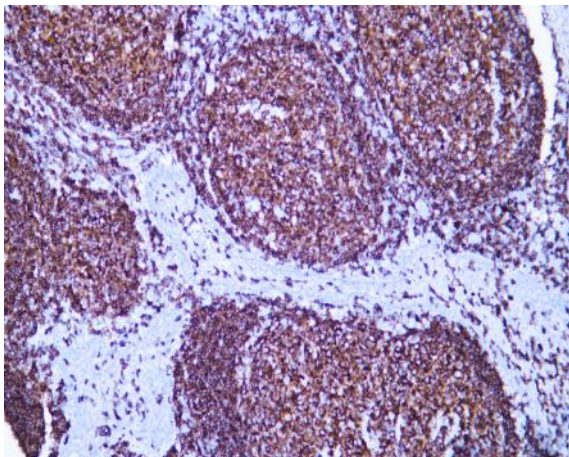
Human diffuse large B-cell lymphoma tissue was stained with Anti-CD20 (ABT065) Antibody



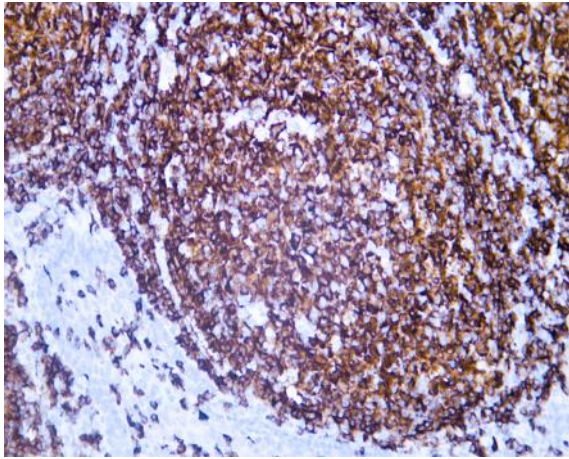
Human diffuse large B-cell lymphoma tissue was stained with Anti-CD20 (ABT065) Antibody



Human spleen tissue was stained with anti-CD20(ABT065) antibody.



Human tonsil tissue was stained with anti-CD20(ABT065) antibody.



Human tonsil tissue was stained with anti-CD20(ABT065) antibody.