

MelanA (PT0408R) PT® Rabbit mAb

| | |
|------------------------------|--|
| Catalog No : | YM8252 |
| Reactivity : | Human; Mouse; |
| Applications : | WB;IHC;IF;IP;ELISA |
| Target : | Melan-A |
| Gene Name : | MLANA MART1 |
| Protein Name : | Mart-1/Melan-A |
| Human Gene Id : | 2315 |
| Human Swiss Prot No : | Q16655 |
| Specificity : | endogenous |
| Formulation : | PBS, 50% glycerol, 0.05% Proclin 300, 0.05%BSA |
| Source : | Monoclonal, rabbit, IgG, Kappa |
| Dilution : | IHC 1:400-1:1000;WB 1:1000-1:5000;IF 1:200-1:1000;ELISA 1:5000-1:20000;IP 1:50-1:200; |
| Purification : | Protein A |
| Storage Stability : | -15°C to -25°C/1 year(Do not lower than -25°C) |
| Molecularweight : | 13kD |
| Observed Band : | 18kD |
| Background : | tissue specificity:Expression is restricted to melanoma and melanocyte cell lines and retina., |
| Function : | tissue specificity:Expression is restricted to melanoma and melanocyte cell lines and retina., |

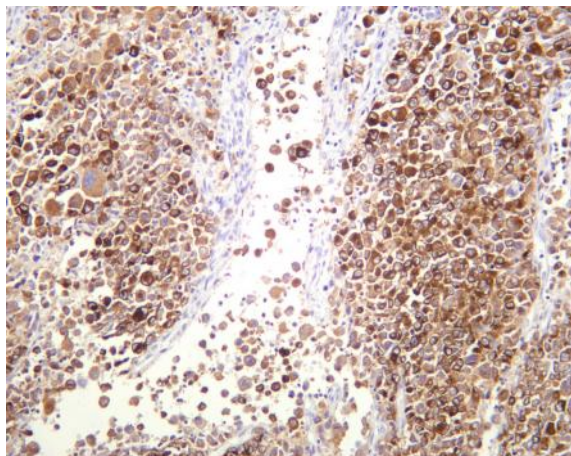
Subcellular Location :

Endoplasmic reticulum membrane

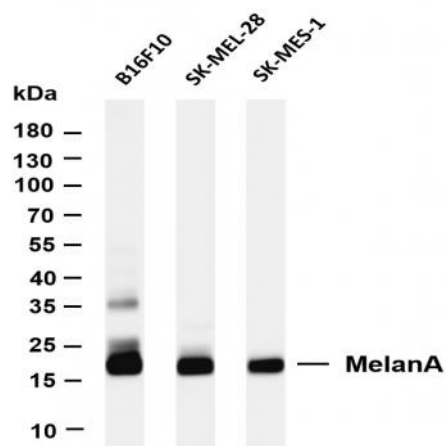
Expression :

Expression is restricted to melanoma and melanocyte cell lines and retina.

Products Images



Human melanoma was stained with anti-MelanA (PT0408R) rabbit antibody



Various whole cell lysates were separated by 4-20% SDS-PAGE, and the membrane was blotted with anti-MelanA (PT0408R) antibody. The HRP-conjugated Goat anti-Rabbit IgG(H + L) antibody was used to detect the antibody. Lane 1: B16F10 Lane 2: SK-MEL-28 Lane 3: SK-MES-1 Predicted band size: 13kDa Observed band size: 18kDa