

## CD14 (PT0417R) PT® Rabbit mAb

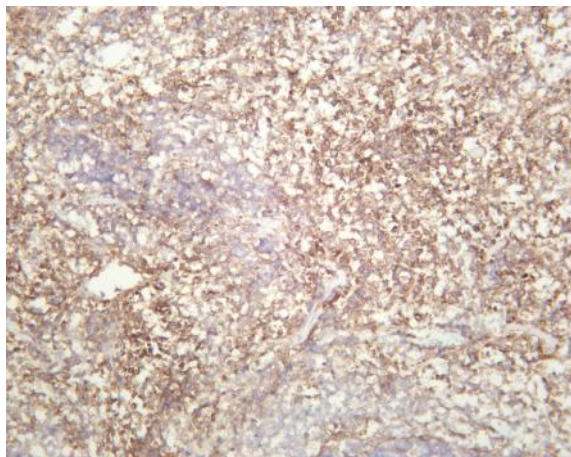
<b>Catalog No :</b>	YM8259
<b>Reactivity :</b>	Human; Mouse;
<b>Applications :</b>	WB;IHC;IF;IP;ELISA
<b>Target :</b>	CD14
<b>Fields :</b>	>>MAPK signaling pathway;>>NF-kappa B signaling pathway;>>Phagosome;>>Toll-like receptor signaling pathway;>>Hematopoietic cell lineage;>>Alcoholic liver disease;>>Shigellosis;>>Salmonella infection;>>Pertussis;>>Legionellosis;>>Amoebiasis;>>Tuberculosis;>>Transcriptional misregulation in cancer;>>Acute myeloid leukemia;>>Lipid and atherosclerosis
<b>Gene Name :</b>	CD14
<b>Protein Name :</b>	CD14
<b>Human Gene Id :</b>	929
<b>Human Swiss Prot No :</b>	P10810
<b>Mouse Gene Id :</b>	12475
<b>Mouse Swiss Prot No :</b>	P10810
<b>Rat Gene Id :</b>	60350
<b>Rat Swiss Prot No :</b>	Q63691
<b>Specificity :</b>	endogenous
<b>Formulation :</b>	PBS, 50% glycerol, 0.05% Proclin 300, 0.05%BSA
<b>Source :</b>	Monoclonal, rabbit, IgG, Kappa
<b>Dilution :</b>	IHC 1:400-1:1000;WB 1:1000-1:5000;IF 1:200-1:1000;ELISA 1:5000-1:20000;IP 1:50-1:200;

---

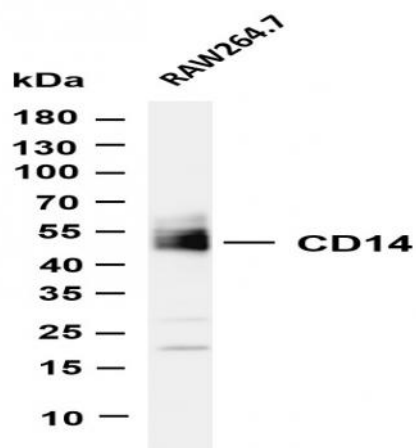
<b>Purification :</b>	Protein A
<b>Storage Stability :</b>	-15°C to -25°C/1 year(Do not lower than -25°C)
<b>Molecularweight :</b>	39kD
<b>Observed Band :</b>	52kD
<b>Background :</b>	The protein encoded by this gene is a surface antigen that is preferentially expressed on monocytes/macrophages. It cooperates with other proteins to mediate the innate immune response to bacterial lipopolysaccharide. Alternative splicing results in multiple transcript variants encoding the same protein. [provided by RefSeq, Mar 2010],
<b>Function :</b>	function:Cooperates with MD-2 and TLR4 to mediate the innate immune response to bacterial lipopolysaccharide (LPS). Acts via MyD88, TIRAP and TRAF6, leading to NF-kappa-B activation, cytokine secretion and the inflammatory response. Up-regulates cell surface molecules, including adhesion molecules.,online information:CD14 entry,similarity:Contains 11 LRR (leucine-rich) repeats.,subunit:Belongs to the lipopolysaccharide (LPS) receptor, a multi-protein complex containing at least CD14, MD-2 and TLR4.,tissue specificity:Expressed strongly on the surface of monocytes and weakly on the surface of granulocytes; also expressed by most tissue macrophages.,
<b>Subcellular Location :</b>	Membrane
<b>Expression :</b>	Detected on macrophages (at protein level) (PubMed:1698311). Expressed strongly on the surface of monocytes and weakly on the surface of granulocytes; also expressed by most tissue macrophages.

---

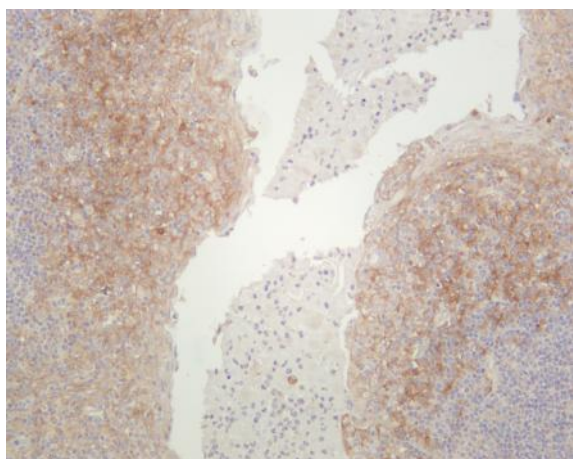
## Products Images



Mouse spleen was stained with anti-CD14 (PT0417R) rabbit antibody



Various whole cell lysates were separated by 4-20% SDS-PAGE, and the membrane was blotted with anti-CD14 (PT0417R) antibody. The HRP-conjugated Goat anti-Rabbit IgG(H + L) antibody was used to detect the antibody. Lane 1: RAW264.7  
Predicted band size: 39kDa Observed band size: 52kDa



Human tonsil was stained with anti-CD14 (PT0417R) rabbit antibody