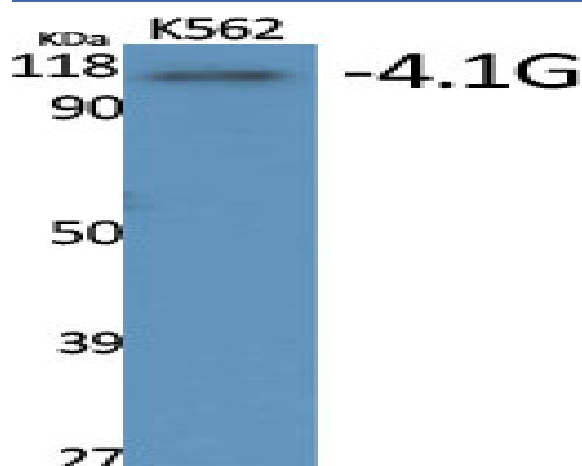


## 4.1G Polyclonal Antibody

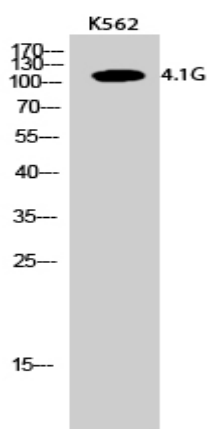
<b>Catalog No :</b>	YT0016
<b>Reactivity :</b>	Human;Rat;Mouse;
<b>Applications :</b>	WB;IHC;IF;ELISA
<b>Target :</b>	4.1G
<b>Gene Name :</b>	EPB41L2
<b>Protein Name :</b>	Band 4.1-like protein 2
<b>Human Gene Id :</b>	2037
<b>Human Swiss Prot No :</b>	O43491
<b>Mouse Swiss Prot No :</b>	O70318
<b>Immunogen :</b>	Synthesized peptide derived from 4.1G . at AA range: 530-610
<b>Specificity :</b>	4.1G Polyclonal Antibody detects endogenous levels of 4.1G protein.
<b>Formulation :</b>	Liquid in PBS containing 50% glycerol, 0.5% BSA and 0.02% sodium azide.
<b>Source :</b>	Polyclonal, Rabbit,IgG
<b>Dilution :</b>	WB 1:500 - 1:2000. IHC 1:100 - 1:300. ELISA: 1:40000.. IF 1:50-200
<b>Purification :</b>	The antibody was affinity-purified from rabbit antiserum by affinity-chromatography using epitope-specific immunogen.
<b>Concentration :</b>	1 mg/ml
<b>Storage Stability :</b>	-15°C to -25°C/1 year(Do not lower than -25°C)
<b>Observed Band :</b>	112kD

<b>Cell Pathway :</b>	Tight junction;
<b>Background :</b>	PTM:Phosphorylated upon DNA damage, probably by ATM or ATR.,similarity:Contains 1 FERM domain.,subunit:The CTD domain interacts with FKBP2 (By similarity). Interacts with FCGR1A.,tissue specificity:Widely expressed.,
<b>Function :</b>	PTM:Phosphorylated upon DNA damage, probably by ATM or ATR.,similarity:Contains 1 FERM domain.,subunit:The CTD domain interacts with FKBP2 (By similarity). Interacts with FCGR1A.,tissue specificity:Widely expressed.,
<b>Subcellular Location :</b>	Cytoplasm, cytoskeleton . Cytoplasm, cell cortex . Cell membrane .
<b>Expression :</b>	Widely expressed.

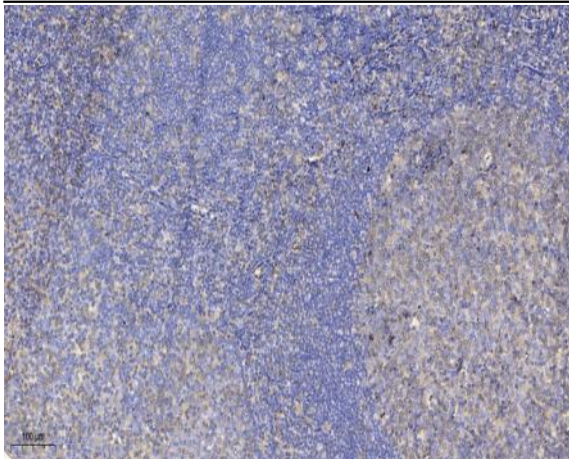
## Products Images



Western Blot analysis of various cells using 4.1G Polyclonal Antibody



Western Blot analysis of K562 cells using 4.1G Polyclonal Antibody



Immunohistochemical analysis of paraffin-embedded human tonsil. 1, Antibody was diluted at 1:200(4 ° overnight). 2, Tris-EDTA,pH9.0 was used for antigen retrieval. 3,Secondary antibody was diluted at 1:200(room temperature, 30min).