

## ANKRD26 Polyclonal Antibody

|                              |   |
|------------------------------|---|
| <b>Catalog No :</b>          | YT0231  |
| <b>Reactivity :</b>          | Human;Rat;Mouse;  |
| <b>Applications :</b>        | IHC;IF;ELISA  |
| <b>Target :</b>              | ANKRD26   |
| <b>Gene Name :</b>           | ANKRD26   |
| <b>Protein Name :</b>        | Ankyrin repeat domain-containing protein 26   |
| <b>Human Gene Id :</b>       | 22852   |
| <b>Human Swiss Prot No :</b> | Q9UPS8  |
| <b>Mouse Swiss Prot No :</b> | Q811D2  |
| <b>Immunogen :</b>           | The antiserum was produced against synthesized peptide derived from human ANKRD26. AA range:791-840                   |
| <b>Specificity :</b>         | ANKRD26 Polyclonal Antibody detects endogenous levels of ANKRD26 protein.   |
| <b>Formulation :</b>         | Liquid in PBS containing 50% glycerol, 0.5% BSA and 0.02% sodium azide.   |
| <b>Source :</b>              | Polyclonal, Rabbit,IgG  |
| <b>Dilution :</b>            | IHC 1:100 - 1:300. ELISA: 1:5000.. IF 1:50-200  |
| <b>Purification :</b>        | The antibody was affinity-purified from rabbit antiserum by affinity-chromatography using epitope-specific immunogen. |
| <b>Concentration :</b>       | 1 mg/ml   |
| <b>Storage Stability :</b>   | -15°C to -25°C/1 year(Do not lower than -25°C)  |
| <b>Molecularweight :</b>     | 196kD   |

**Background :**

This gene encodes a protein containing N-terminal ankyrin repeats which function in protein-protein interactions. Mutations in this gene are associated with autosomal dominant thrombocytopenia-2. Pseudogenes of this gene are found on chromosome 7, 10, 13 and 16. Multiple transcript variants encoding different isoforms have been found for this gene. [provided by RefSeq, Dec 2011],

**Function :**

PTM:Phosphorylated upon DNA damage, probably by ATM or ATR.,similarity:Contains 5 ANK repeats.,

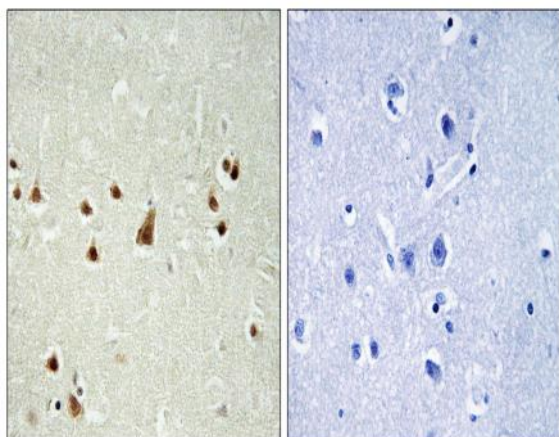
**Subcellular Location :**

centrosome,

**Expression :**

Brain,Embryo,Epithelium,Lymph,Melanoma,Testis,Trachea,

## Products Images



Immunohistochemistry analysis of paraffin-embedded human brain, using ANKRD26 Antibody. The picture on the right is blocked with the synthesized peptide.