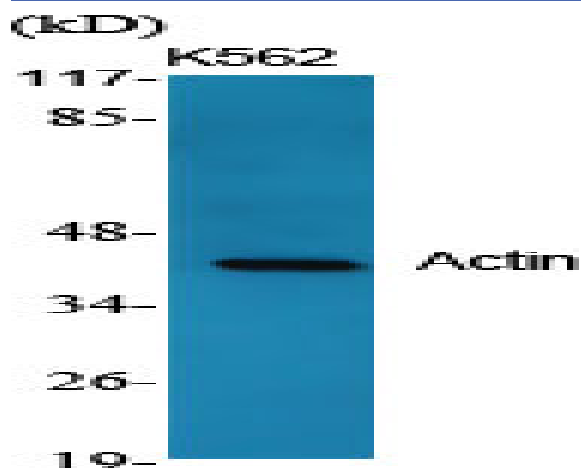


Actin Polyclonal Antibody

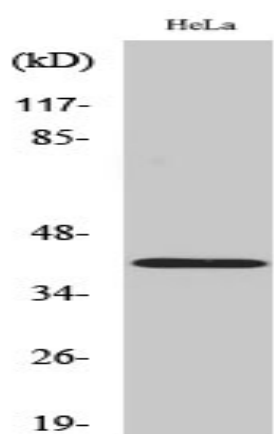
Catalog No :	YT0096
Reactivity :	Human;Mouse;Rat;Fish
Applications :	WB;IHC;IF;ELISA
Target :	Actin pan
Fields :	>>Rap1 signaling pathway;>>Phagosome;>>Apoptosis;>>Hippo signaling pathway;>>Focal adhesion;>>Adherens junction;>>Tight junction;>>Platelet activation;>>Neutrophil extracellular trap formation;>>Leukocyte transendothelial migration;>>Thermogenesis;>>Regulation of actin cytoskeleton;>>Thyroid hormone signaling pathway;>>Oxytocin signaling pathway;>>Gastric acid secretion;>>Amyotrophic lateral sclerosis;>>Bacterial invasion of epithelial cells;>>Vibrio cholerae infection;>>Pathogenic Escherichia coli infection;>>Shigellosis;>>Salmonella infection;>>Yersinia infection;>>Influenza A;>>Proteoglycans in cancer;>>Hepatocellular carcinoma;>>Hypertrophic cardiomyopathy;>>Arrhythmogenic right ventricular cardiomyopathy;>>Dilated cardiomyopathy;>>Viral myocarditis;>>Fluid shear stress and atherosclerosis
Gene Name :	ACTG1
Protein Name :	Actin cytoplasmic 2
Human Gene Id :	60/71
Human Swiss Prot No :	P60709/Q9BYX7/P63261
Mouse Gene Id :	11461/11465
Rat Gene Id :	81822/100361457
Rat Swiss Prot No :	P60711/P63259
Immunogen :	The antiserum was produced against synthesized peptide derived from human Actin. AA range:326-375
Specificity :	Actin Polyclonal Antibody detects endogenous levels of Actin protein.

Formulation :	Liquid in PBS containing 50% glycerol, 0.5% BSA and 0.02% sodium azide.
Source :	Polyclonal, Rabbit,IgG
Dilution :	WB 1:500 - 1:2000. IHC 1:100 - 1:300. ELISA: 1:10000.. IF 1:50-200
Purification :	The antibody was affinity-purified from rabbit antiserum by affinity-chromatography using epitope-specific immunogen.
Concentration :	1 mg/ml
Storage Stability :	-15°C to -25°C/1 year(Do not lower than -25°C)
Observed Band :	45kD
Cell Pathway :	Focal adhesion;Adherens_Junction;Adherens_Junction;Leukocyte transendothelial migration;Regulates Actin and Cytoskeleton;Vibrio cholerae infection;Pathogenic Escherichia coli infection;Hypertrophic ca
Background :	This gene encodes one of six different actin proteins. Actins are highly conserved proteins that are involved in cell motility, structure, and integrity. This actin is a major constituent of the contractile apparatus and one of the two nonmuscle cytoskeletal actins. [provided by RefSeq, Jul 2008],
Function :	disease:Defects in ACTB are a cause of dystonia juvenile-onset (DYTJ) [MIM:607371]. DYTJ is a form of dystonia with juvenile onset. Dystonia is defined by the presence of sustained involuntary muscle contraction, often leading to abnormal postures. DYTJ patients manifest progressive, generalized, dopa-unresponsive dystonia, developmental malformations and sensory hearing loss.,function:Actins are highly conserved proteins that are involved in various types of cell motility and are ubiquitously expressed in all eukaryotic cells.,miscellaneous:In vertebrates 3 main groups of actin isoforms, alpha, beta and gamma have been identified. The alpha actins are found in muscle tissues and are a major constituent of the contractile apparatus. The beta and gamma actins coexist in most cell types as components of the cytoskeleton and as mediators of internal cell motility.,similarity:Belongs to the
Subcellular Location :	Cytoplasm, cytoskeleton . Nucleus . Localized in cytoplasmic mRNP granules containing untranslated mRNAs. .
Expression :	B-cell lymphoma,Brain,Cajal-Retzius cell,Eye,Fetal brain cortex,Foreskin,Hepatocellular car

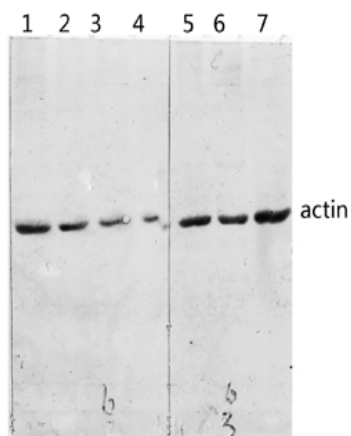
Products Images



Western Blot analysis of various cells using Actin Polyclonal Antibody diluted at 1:2000



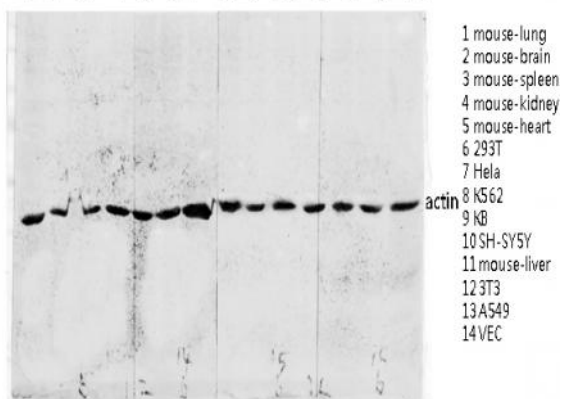
Western Blot analysis of HeLa cells using Actin Polyclonal Antibody diluted at 1:2000



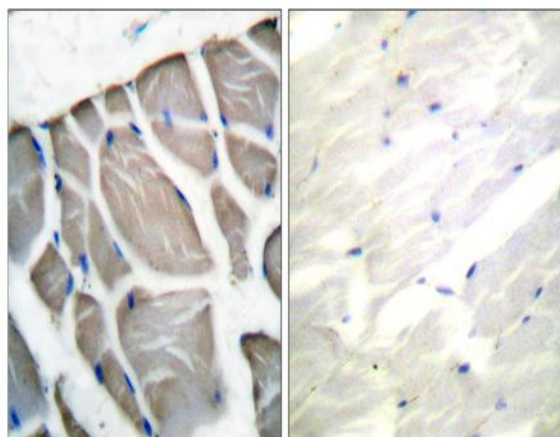
- 1 MCF-7
- 2 U2OS
- 3 HeLa UV
- 4 MCF-7 UV
- 5 3T3 UV
- 6 KB UV
- 7 U2OS UV

Western blot analysis of various lysis using Actin Polyclonal Antibody diluted at 1:2000. Secondary antibody(catalog#:RS0002) was diluted at 1:20000

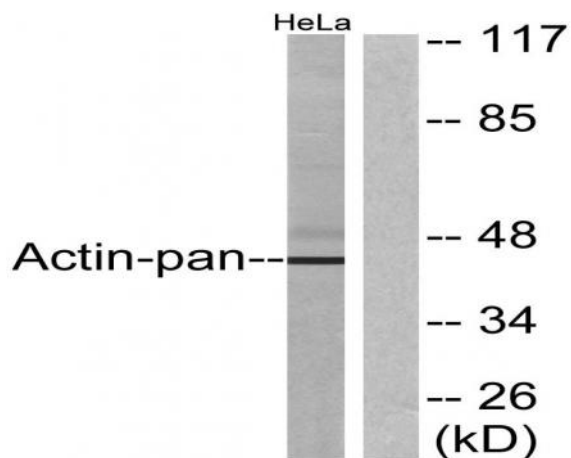
1 2 3 4 5 6 7 8 9 10 11 12 13 14



Western blot analysis of various lysis using Actin Polyclonal Antibody diluted at 1:2000. Secondary antibody(catalog#:RS0002) was diluted at 1:20000



Immunohistochemistry analysis of paraffin-embedded human skeletal muscle tissue, using Actin-pan Antibody. The picture on the right is blocked with the synthesized peptide.



Western blot analysis of lysates from HeLa cells, using Actin-pan Antibody. The lane on the right is blocked with the synthesized peptide.