

Cleaved THRB (heavy chain,Ile364) Rabbit pAb

CatalogNo: YC0207

Key Features

Host Species

- Rabbit

Reactivity

- Human,Mouse,Rat

Applications

- WB,ELISA,IHC

MW

- 28kD,63kD (Observed)

Isotype

- IgG

Storage

Storage* -15°C to -25°C/1 year (Do not lower than -25°C)

Formulation Liquid in PBS containing 50% glycerol, 0.5% BSA and 0.02% sodium azide.

Recommended Dilution Ratios

WB 1:500-2000

IHC 1:50-300

ELISA 1:2000-20000

Basic Information

Clonality Polyclonal

Immunogen Information

Immunogen Synthesized peptide derived from human THRB (heavy chain, Cleaved-Ile364)

Specificity This antibody detects endogenous levels of Human,Mouse,Rat THRB (heavy chain, Cleaved-Ile364, protein was cleaved amino acid sequence between 363-364)

Target Information

Gene name F2

Protein Name THRB (heavy chain, Cleaved-Ile364)

| Organism | Gene ID | UniProt ID |
|----------|------------------------|-------------------------|
| Human | 2147; | P00734; |
| Mouse | 14061; | P19221; |
| Rat | | P18292; |

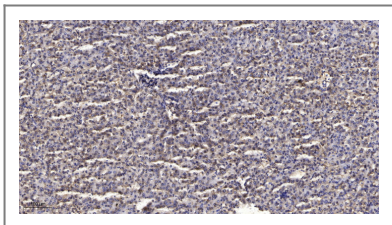
Cellular Localization Secreted , extracellular space.

Tissue specificity Expressed by the liver and secreted in plasma.

Function

protein import into nucleus , translocation , cell activation , regulation of protein amino acid phosphorylation , positive regulation of protein amino acid phosphorylation , acute inflammatory response , protein amino acid phosphorylation ,proteolysis , protein targeting , protein import into nucleus , phosphorus metabolic process , phosphate metabolic process , ion transport , cation transport , calcium ion transport , cellular ion homeostasis , cellular calcium ion homeostasis , cellular metal ion homeostasis , intracellular protein transport , nucleocytoplasmic transport , apoptosis ,activation of caspase activity , defense response , acute-phase response , inflammatory response , cell surface receptor linked signal transduction , elevation of cytosolic calcium ion concentration , intracellular signaling cascade , protein kinase cascade , JAK-STAT cascade , tyrosine phosphorylation of STAT protein , STAT protein nuclear translocation , blood coagulation , hemostasis , protein localization , cell death , response to wounding , positive regulation of biosynthetic process , regulation of calcium ion transport into cytosol , positive regulation of calcium ion transport into cytosol ,positive regulation of macromolecule biosynthetic process , positive regulation of phosphorus metabolic process ,positive regulation of macromolecule metabolic process , regulation of collagen metabolic process , positive regulation of collagen metabolic process , regulation of cell death , positive regulation of peptidase activity , regulation of metal ion transport , programmed cell death , protein transport , di- , tri-valent inorganic cation transport , death , phosphorylation ,protein import , peptidyl-tyrosine phosphorylation , peptidyl-tyrosine modification , regulation of phosphate metabolic process , cellular homeostasis , metal ion transport , cellular cation homeostasis , cellular di- , tri-valent inorganic cation homeostasis , platelet activation , regulation of blood coagulation , positive regulation of blood coagulation , negative regulation of blood coagulation , regulation of protein modification process , positive regulation of protein modification process , regulation of response to external stimulus , regulation of cellular protein metabolic process , positive regulation of cellular protein metabolic process , regulation of homeostatic process , positive regulation of homeostatic process , regulation of collagen biosynthetic process , positive regulation of collagen biosynthetic process , protein localization in organelle , protein localization in nucleus , cellular protein localization , wound healing , regulation of phosphorylation , positive regulation of phosphorylation , homeostatic process , fibrinolysis , regulation of apoptosis ,regulation of programmed cell death , positive regulation of catalytic activity , regulation of ion transport , positive regulation of ion transport , positive regulation of caspase activity , regulation of caspase activity , positive regulation of molecular function , regulation of multicellular organismal metabolic process , positive regulation of multicellular organismal metabolic process , establishment of protein localization , positive regulation of phosphate metabolic process , intracellular transport , chemical homeostasis , ion homeostasis , coagulation , regulation of coagulation ,negative regulation of coagulation , positive regulation of coagulation , regulation of body fluid levels , positive regulation of transport , nuclear transport , nuclear import , regulation of phosphorus metabolic process , release of sequestered calcium ion into cytosol , positive regulation of multicellular organismal process , negative regulation of multicellular organismal process , positive regulation of protein metabolic process , regulation of release of sequestered calcium ion into cytosol , positive regulation of release of sequestered calcium ion into cytosol , regulation of sequestering of calcium ion , negative regulation of sequestering of calcium ion , regulation of hydrolase activity ,positive regulation of hydrolase activity , cytosolic calcium ion homeostasis , regulation of calcium ion transport , positive regulation of calcium ion transport , regulation of peptidase activity , regulation of endopeptidase activity , metal ion homeostasis , di- , tri-valent inorganic cation homeostasis , calcium ion homeostasis , cation homeostasis , cellular chemical homeostasis , cytosolic calcium ion transport , calcium ion transport into cytosol , cellular macromolecule localization ,

Validation Data



Immunohistochemical analysis of paraffin-embedded human liver cancer. 1, Antibody was diluted at 1:200 (4°C overnight). 2, Tris-EDTA, pH 9.0 was used for antigen retrieval. 3, Secondary antibody was diluted at 1:200 (room temperature, 45min).

| Contact information

Orders: order.cn@immunoway.com
Support: support.cn@immunoway.com
Telephone: 400-8787-807(China)
Website: <http://www.immunoway.com.cn>
Address: 2200 Ringwood Ave San Jose, CA 95131 USA



Please scan the QR code to access additional product information:
**Cleaved THRB
(heavy chain, Ile364)
Rabbit pAb**

For Research Use Only. Not for Use in Diagnostic Procedures.

[Antibody](#) | [ELISA Kits](#) | [Protein](#) | [Reagents](#)