

CDK6 (PT0069R) Rabbit mAb

CatalogNo: YM8037 **Recombinant** 

Key Features

Host Species

- Rabbit

Reactivity

- Human

Applications

- WB,IHC,IF,ELISA

MW

- 37kD (Calculated)
37kD (Observed)

Isotype

- IgG, Kappa

Storage

Storage* -15°C to -25°C/1 year (Do not lower than -25°C)

Formulation PBS, 50% glycerol, 0.05% Proclin 300, 0.05%BSA

Recommended Dilution Ratios

IHC 1:200-1000

WB 1:1000-5000

IF 1:200-1000

ELISA 1:5000-20000

Basic Information

Clonality Monoclonal

Clone Number PT0069R

Immunogen Information

Immunogen The specific immunogen used to produce this antibody is proprietary information.

Specificity Endogenous

Target Information

Gene name CDK6 CDKN6

Protein Name Cyclin-dependent kinase 6 (Cell division protein kinase 6) (Serine/threonine-protein kinase PLSTIRE)

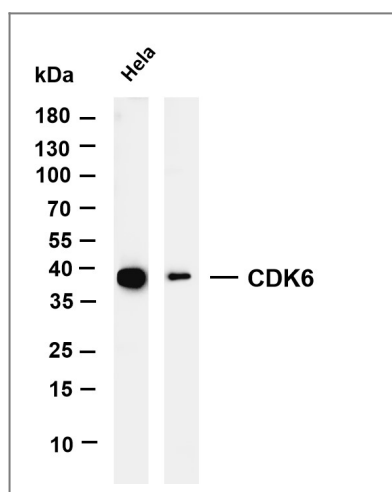
Organism	Gene ID	UniProt ID
Human	1021 ;	Q00534 ;
Mouse	12571 ;	Q64261 ;

Cellular Localization Nuclear

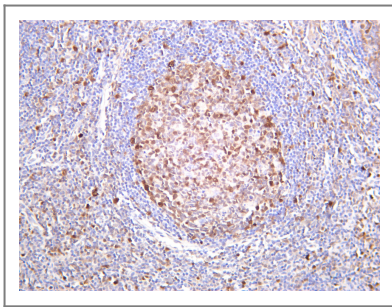
Tissue specificity Expressed ubiquitously. Accumulates in squamous cell carcinomas , proliferating hematopoietic progenitor cells , beta-cells of pancreatic islets of Langerhans , and neuroblastomas. Reduced levels in differentiating cells.

Function Catalytic activity:ATP + a protein = ADP + a phosphoprotein. ,Function:Probably involved in the control of the cell cycle. Interacts with D-type G1 cyclins. ,polymorphism:Genetic variations in CDK6 influences stature as a quantitative trait type 11 (STQTL11) [MIM:612223]. Adult height is an easily observable and highly heritable complex continuous trait. Because of this , it is a model trait for studying genetic influence on quantitative traits. ,similarity:Belongs to the protein kinase superfamily. ,similarity:Belongs to the protein kinase superfamily. CMGC Ser/Thr protein kinase family. CDC2/CDKX subfamily. ,similarity:Contains 1 protein kinase domain. ,

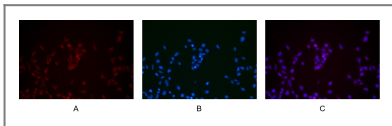
Validation Data



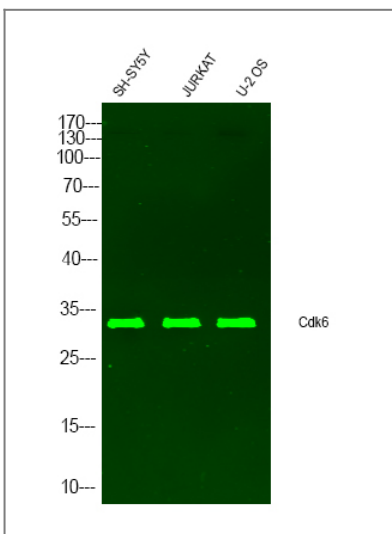
Various whole cell lysates were separated by 4-20% SDS-PAGE, and the membrane was blotted with anti-CDK6 antibody. The HRP-conjugated Goat anti-Rabbit IgG (H + L) antibody was used to detect the antibody. Lane 1: HeLa Lane 2: Jurkat Lane 3: K562 Predicted band size: 37kDa Observed band size: 37kDa



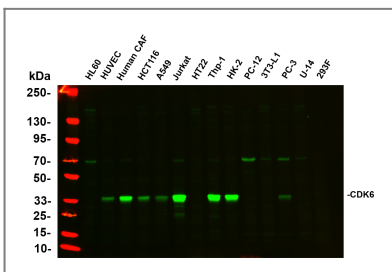
Human tonsil was stained with Anti-CDK6 rabbit antibody



Immunofluorescence analysis of HEK293. Picture A: CDK6 antibody (red). Picture B: DAPI (blue). Picture C: Merge of A+B



Western Blot analysis of various cell lysis. Primary Antibody was diluted at 1:1000. Secondary antibody (catalog#:RS23920) was diluted at 1:10000



Various whole cell lysates were separated by 4-20% SDS-PAGE, and the primary antibody was used at 4°C over night with a 1:2500 dilution. The Dylight 800-conjugated Goat anti-Rabbit antibody (Cat:RS23920) was used to detect the antibody. Lane1: HL60 - Human promyelocytic leukemia cell Lane2: HUVEC - Human umbilical vein endothelial cell Lane3: Human CAF - Human cancer-associated fibroblast Lane4: HCT116 - Human colorectal carcinoma Lane5: A549 - Human lung carcinoma Lane6: Jurkat - Human T lymphocyte leukemia Lane7: HT22 - Mouse hippocampal neuronal Lane8: Thp-1 - Human monocytic leukemia Lane9: HK-2 - Human proximal tubular epithelial Lane10: PC-12 - Rat adrenal pheochromocytoma Lane11: 3T3-L1 - Mouse embryonic fibroblast cells Lane12: PC-3 - Human prostate adenocarcinoma Lane13: U-14 - Mouse cervical carcinoma Lane14: 293F - HEK293 derivative, adapted for suspension culture Predicted band size: 37kDa Observed band size: 37kDa

Contact information

Orders: order.cn@immunoway.com
 Support: support.cn@immunoway.com
 Telephone: 400-8787-807(China)
 Website: <http://www.immunoway.com.cn>
 Address: 2200 Ringwood Ave San Jose, CA 95131 USA



Please scan the QR code to access additional product information:
CDK6 (PT0069R)
Rabbit mAb

