

STAP2 Rabbit pAb

CatalogNo: YN1719

Key Features

Host Species

- Rabbit

Reactivity

- Human, Mouse

Applications

- WB, ELISA

MW

- 44kD (Observed)

Isotype

- IgG

Storage

Storage* -15°C to -25°C/1 year (Do not lower than -25°C)

Formulation Liquid in PBS containing 50% glycerol, 0.5% BSA and 0.02% sodium azide.

Recommended Dilution Ratios

WB 1:500-2000

ELISA 1:5000-20000

Basic Information

Clonality Polyclonal

Immunogen Information

Immunogen Synthesized peptide derived from part region of human protein. AA range:1-72

Specificity STAP2 Polyclonal Antibody detects endogenous levels of protein.

Target Information

Gene name STAP2 BKS

Protein Name Signal-transducing adaptor protein 2 (STAP-2) (Breast tumor kinase substrate) (BRK substrate)

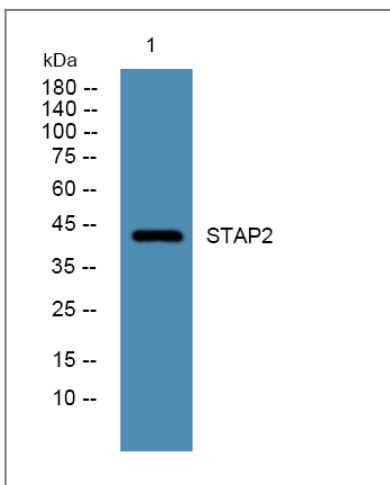
Organism	Gene ID	UniProt ID
Human	55620;	Q9UGK3;
Mouse		Q8R0L1;

Cellular Localization Cytoplasm .

Tissue specificity Widely expressed.

Function Function:Substrate of protein kinase PTK6. May play a regulatory role in the acute-phase response in systemic inflammation and may modulate STAT3 activity.,PTM:Phosphorylated on tyrosine. Tyr-250 may be important for interaction with kinases. Tyr-22 and Tyr-322 appears to be phosphorylated by SRC.,sequence Caution:Alu insert from position 358 to 403.,similarity:Contains 1 PH domain.,similarity:Contains 1 SH2 domain.,subunit:Interacts with PTK6 and CSF1R.,tissue specificity:Widely expressed.,

Validation Data



Western blot analysis of lysates from SH-SY5Y cells, primary antibody was diluted at 1:1000, 4° over night

Contact information

Orders: order.cn@immunoway.com
Support: support.cn@immunoway.com
Telephone: 400-8787-807(China)
Website: <http://www.immunoway.com.cn>
Address: 2200 Ringwood Ave San Jose, CA 95131 USA



Please scan the QR code to access additional product information:
STAP2 Rabbit pAb

