

MPP2 Rabbit pAb

CatalogNo: YT7685

Key Features

Host Species

- Rabbit

Reactivity

- Human, Mouse

Applications

- WB, IHC

MW

- 63kD (Calculated)

Isotype

- IgG

Storage

Storage* -15°C to -25°C/1 year (Do not lower than -25°C)

Formulation Liquid in PBS containing 50% glycerol, 0.5% BSA and 0.02% sodium azide.

Recommended Dilution Ratios

WB 1:500-2000

IHC 1:50-300

Basic Information

Clonality Polyclonal

Immunogen Information

Immunogen Synthesized peptide derived from human MPP2 AA range: 439-489

Specificity This antibody detects endogenous levels of MPP2 at Human/Mouse

Target Information

Gene name MPP2 DLG2

Protein Name MPP2

Organism	Gene ID	UniProt ID
Human	4355;	Q14168;
Mouse	50997;	Q9WV34;

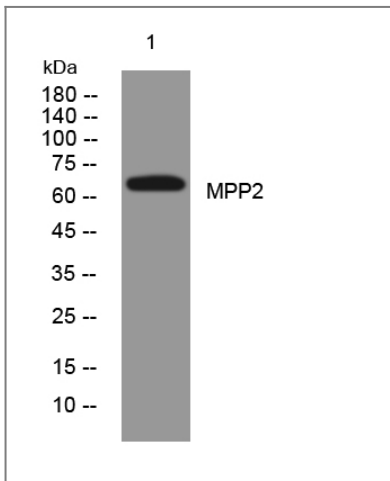
Cellular Localization

Cytoplasm, cytoskeleton . Membrane . Cell projection, dendrite . Cell junction, synapse, postsynaptic density . Prominently expressed in the postsynaptic densities of dendritic spines, is also detected in dendritic shafts. .

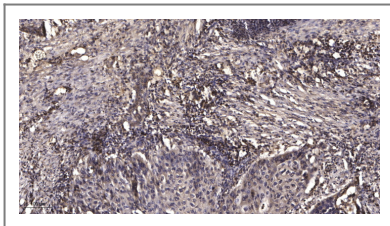
Function

similarity:Belongs to the MAGUK family.,similarity:Contains 1 guanylate kinase-like domain.,similarity:Contains 1 PDZ (DHR) domain.,similarity:Contains 1 SH3 domain.,similarity:Contains 2 L27 domains.,

Validation Data



Western blot analysis of lysates from SH-SY5Y cells, primary antibody was diluted at 1:1000, 4° overnight



Immunohistochemical analysis of paraffin-embedded human Squamous cell carcinoma of lung. 1, Antibody was diluted at 1:200(4° overnight). 2, Tris-EDTA,pH9.0 was used for antigen retrieval. 3,Secondary antibody was diluted at 1:200(room temperature, 45min).

Contact information

Orders: order.cn@immunoway.com
Support: support.cn@immunoway.com
Telephone: 400-8787-807(China)
Website: <http://www.immunoway.com.cn>
Address: 2200 Ringwood Ave San Jose, CA 95131 USA



Please scan the QR code to access additional product information:
MPP2 Rabbit pAb

