

Goat Anti Rabbit IgG(H+L) (HRP)

CatalogNo: RS0002 **Orthogonal Validated** 

| Key Features

Host Species

- Goat

Reactivity

- Rabbit

Applications

- WB,IHC,ELISA

Conjugate

- HRP

| Storage

Storage* -15°C to -25°C/1 year (Do not lower than -25°C)

Formulation Liquid in PBS containing 50% glycerol, 0.5% BSA and 0.02% sodium azide.

| Recommended Dilution Ratios

WB 1:5000-20000

IHC 1:20-100

ELISA 1:5000-20000

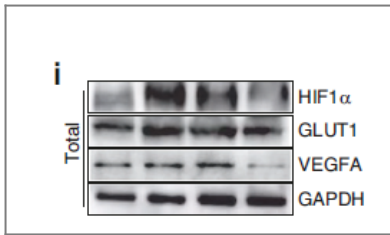
| Basic Information

| Immunogen Information

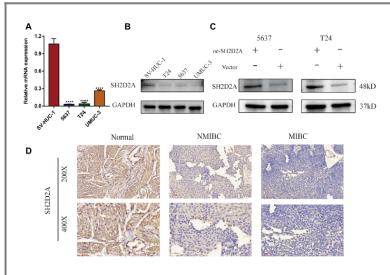
| Target Information

Protein Name

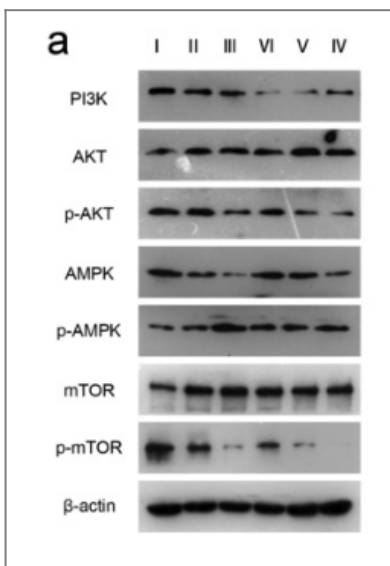
Validation Data



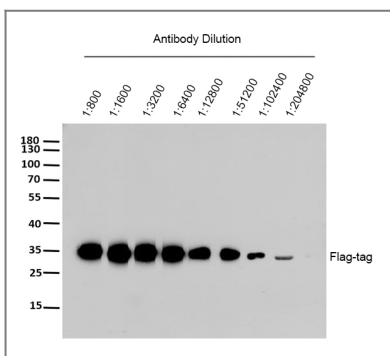
TBBPA causes apoptosis in grass carp hepatocytes involving destroyed ER-mitochondrial function. CHEMOSPHERE Shiwen Xu WB Fish 1:8000 L8824 cell



A novel CD8+ T cell-related gene signature for predicting the prognosis and immunotherapy efficacy in bladder cancer. INFLAMMATION RESEARCH Xu Ning WB Human 1:1000 5637 cell, T24 cell, UMUC-3 cell, SV-HUC-1 cell



Kang, Min, et al. "Autophagy was activated against the damages of placentas caused by nano-copper oral exposure." Ecotoxicology and Environmental Safety 220 (2021): 112364.



Western Blot analysis of flag-tag protein using primary antibody at various dilution. Secondary antibody (catalog#:RS0002) was diluted at 1:10000

Contact information

Orders: order.cn@immunoway.com
 Support: support.cn@immunoway.com
 Telephone: 400-8787-807(China)
 Website: <http://www.immunoway.com.cn>
 Address: 2200 Ringwood Ave San Jose, CA 95131 USA



Please scan the QR code to access additional product information:
Goat Anti Rabbit IgG(H+L) (HRP)

