

GLUT-1 (PTR2138) Mouse mAb

CatalogNo: YM4463

Key Features

Host Species

- Mouse

Reactivity

- Human, Mouse, Rat,

Applications

- WB, IF, ELISA

MW

- 54kD (Calculated)
54kD (Observed)

Isotype

- IgG

Recommended Dilution Ratios

WB 1:500-2000

IF 1:100-500

ELISA 1:1000-5000

Storage

Storage* -15°C to -25°C/1 year (Do not lower than -25°C)

Formulation PBS, 50% glycerol, 0.05% Proclin 300, 0.05% BSA

Basic Information

Clonality Monoclonal

Clone Number PTR2138

Immunogen Information

Immunogen Synthesized peptide derived from human GLUT-1 AA range: 400-492

Specificity This antibody detects endogenous levels of GLUT-1 protein.

Target Information

Gene name SLC2A1 GLUT1

Protein Name Solute carrier family 2, facilitated glucose transporter member 1 (Glucose transporter type 1, erythrocyte/brain) (GLUT-1) (HepG2 glucose transporter)

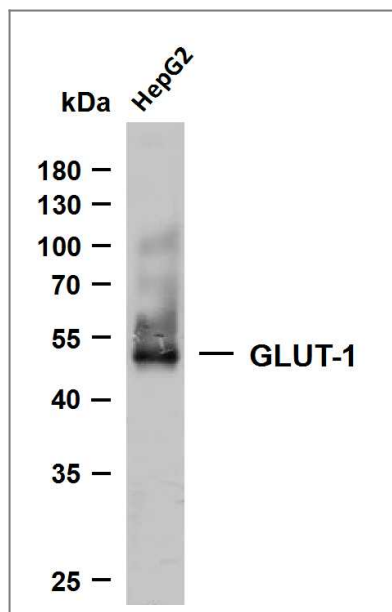
| Organism | Gene ID | UniProt ID |
|----------|-------------------------|--------------------------|
| Human | 6513 ; | P11166 ; |
| Mouse | 20525 ; | P17809 ; |

Cellular Localization Membranous

Tissue specificity Detected in erythrocytes (at protein level). Expressed at variable levels in many human tissues.

Function Facilitative glucose transporter, which is responsible for constitutive or basal glucose uptake . Has a very broad substrate specificity; can transport a wide range of aldoses including both pentoses and hexoses . Most important energy carrier of the brain: present at the blood-brain barrier and assures the energy-independent, facilitative transport of glucose into the brain . In association with BSG and NXNL1, promotes retinal cone survival by increasing glucose uptake into photoreceptors (By similarity).

Validation Data



Whole cell lysates were separated by 10% SDS-PAGE, and the membrane was blotted with anti-GLUT-1 (PTR2138) antibody. The HRP-conjugated Goat anti-Mouse IgG(H + L) antibody was used to detect the antibody. Lane 1: HepG2

Contact information

Orders: order.cn@immunoway.com
Support: support.cn@immunoway.com
Telephone: 400-8787-807(China)
Website: http://www.immunoway.com.cn
Address: 2200 Ringwood Ave San Jose, CA 95131 USA



Please scan the QR code
to access additional
product information:
GLUT-1 (PTR2138)
Mouse mAb

For Research Use Only. Not for Use in Diagnostic Procedures.

[Antibody](#) | [ELISA Kits](#) | [Protein](#) | [Reagents](#)