

FOXO1A (PT0213R) PT® Rabbit mAb

CatalogNo: YM8135 **Recombinant** 

Key Features

Host Species

- Rabbit

Reactivity

- Human, Mouse,

Applications

- WB, IHC, IF, IP, ELISA

MW

- 75kD (Calculated)
75kD (Observed)

Isotype

- IgG, Kappa

Recommended Dilution Ratios

IHC 1:400-1000

WB 1:1000-5000

IF 1:200-1000

ELISA 1:5000-20000

IP 1:50-200

Storage

Storage* -15°C to -25°C/1 year (Do not lower than -25°C)

Formulation PBS, 50% glycerol, 0.05% Proclin 300, 0.05% BSA

Basic Information

Clonality Monoclonal

Clone Number PT0213R

Immunogen Information

Specificity Endogenous

| Target Information

Gene name FOXO1
Protein Name Forkhead box protein O1

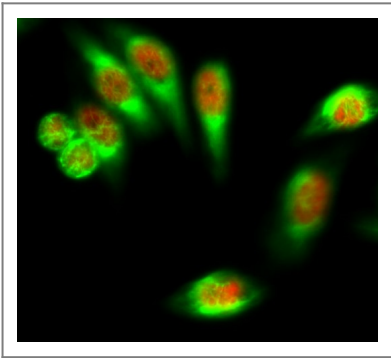
Organism	Gene ID	UniProt ID
Human	2308;	Q12778;
Mouse	56458;	Q9R1E0;
Rat	84482;	G3V7R4;

Cellular Localization Nucleus

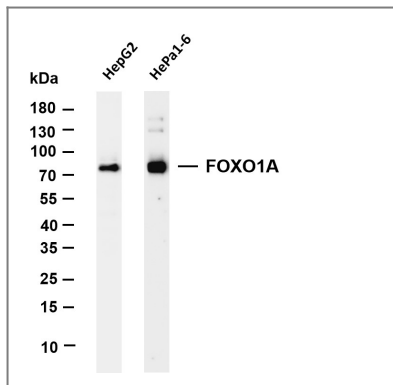
Tissue specificity Ubiquitous.

Function Disease:Chromosomal aberrations involving FOXO1 are a cause of rhabdomyosarcoma 2 (RMS2) [MIM:268220]; also known as alveolar rhabdomyosarcoma. Translocation (2;13)(q35;q14) with PAX3; translocation t(1;13)(p36;q14) with PAX7. The resulting protein is a transcriptional activator.,Function:Transcription factor.,PTM:Phosphorylated by AKT1; insulin-induced (By similarity). IGF1 rapidly induces phosphorylation of Ser-256, Thr-24, and Ser-319. Phosphorylation of Ser-256 decreases DNA-binding activity and promotes the phosphorylation of Thr-24, and Ser-319, permitting phosphorylation of Ser-322 and Ser-325, probably by CK1, leading to nuclear exclusion and loss of function. Phosphorylation of Ser-329 is independent of IGF1 and leads to reduced function. Phosphorylated upon DNA damage, probably by ATM or ATR.,similarity:Contains 1 fork-head DNA-binding domain.,subcellular location:Shuttles between cytoplasm and nucleus.,subunit:Interacts with LRPPRC.,tissue specificity:Ubiquitous.,

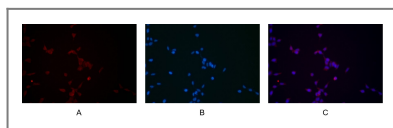
| Validation Data



Immunofluorescence analysis of HeLa cell. 1,FoxO1 Antibody(red) was diluted at 1:200(4° overnight). CK7 Monoclonal Antibody(12D7)(green) was diluted at 1:200(4° overnight). 2, Goat Anti Rabbit Alexa Fluor 594 Catalog:RS3611 was diluted at 1:1000(room temperature, 50min). Goat Anti Mouse Alexa Fluor 488 Catalog:RS3208 was diluted at 1:1000(room temperature, 50min).



Various whole cell lysates were separated by 4-20% SDS-PAGE, and the membrane was blotted with anti-FOXO1A antibody. The HRP-conjugated Goat anti-Rabbit IgG(H + L) antibody was used to detect the antibody. Lane 1: HepG2 Lane 2: HePa1-6 Predicted band size: 75kDa Observed band size: 75kDa



Immunofluorescence analysis of HEK293. Picture A: FOXO1A antibody (red). Picture B: DAPI (blue). Picture C: Merge of A+B

Contact information

Orders: order.cn@immunoway.com
 Support: support.cn@immunoway.com
 Telephone: 400-8787-807(China)
 Website: <http://www.immunoway.com.cn>
 Address: 2200 Ringwood Ave San Jose, CA 95131 USA



Please scan the QR code to access additional product information:
FOXO1A (PT0213R)
PT® Rabbit mAb

For Research Use Only. Not for Use in Diagnostic Procedures.

[Antibody](#) | [ELISA Kits](#) | [Protein](#) | [Reagents](#)