

Cyclin D1 (PT0238R) PT™ Rabbit mAb

CatalogNo: YM8149 **Recombinant** **KD/KO Validated**

Key Features

Host Species

- Rabbit

Reactivity

- Human, Mouse, Rat, Rabbit, Pig, Geese

Applications

- WB, IHC, IF, IP, ELISA

MW

- 34kD (Calculated)
36kD (Observed)

Isotype

- IgG, Kappa

Storage

Storage* -15°C to -25°C/1 year (Do not lower than -25°C)

Formulation PBS, 50% glycerol, 0.05% Proclin 300, 0.05% BSA

Recommended Dilution Ratios

IHC 1:200-1:1000

WB 1:1000-1:5000

IF 1:200-1:1000

ELISA 1:5000-1:20000

IP 1:50-1:200,

Basic Information

Clonality Monoclonal

Clone Number PT0238R

Immunogen Information

Immunogen The specific immunogen used to produce this antibody is proprietary information.

Specificity Endogenous

| Target Information

Gene name CCND1

Protein Name G1/S-specific cyclin-D1

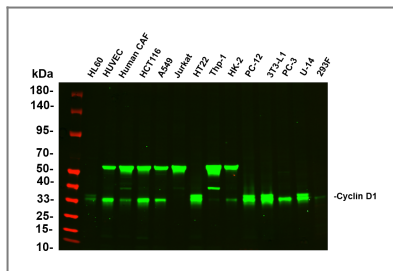
Organism	Gene ID	UniProt ID
Human	595 ;	P24385 ;
Mouse	12443 ;	P25322 ;
Rat	58919 ;	P39948 ;

Cellular Localization Nucleus

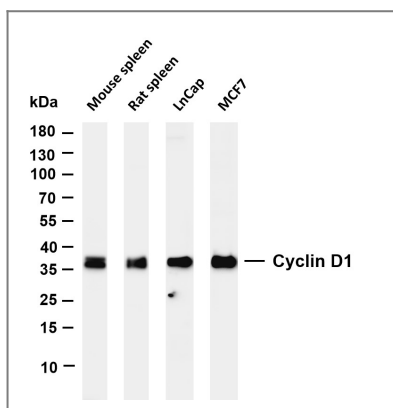
Tissue specificity Brain ,Placenta ,Tongue ,

Function Disease:A chromosomal aberration involving CCND1 may be a cause of B-lymphocytic malignancy , particularly mantle-cell lymphoma (MCL) . Translocation t (11;14) (q13;q32) with immunoglobulin gene regions. Activation of CCND1 may be oncogenic by directly altering progression through the cell cycle. ,Disease:A chromosomal aberration involving CCND1 may be a cause of multiple myeloma [MIM:254500]. Translocation t (11;14) (q13;q32) with the IgH locus. ,Disease:A chromosomal aberration involving CCND1 may be a cause of parathyroid adenomas [MIM:168461]. Translocation t (11;11) (q13;p15) with the parathyroid hormone (PTH) enhancer. ,Function:Essential for the control of the cell cycle at the G1/S (start) transition. ,online information:The Singapore human mutation and polymorphism database ,PTM:Following DNA damage it is ubiquitinated by some SCF (SKP1-cullin-F-box) protein ligase complex containing FBXO31. Ubiquitination leads to its degradation and G1 arrest. ,PTM:Phosphorylation at Thr-286 by MAP kinases is required for ubiquitination and degradation following DNA damage. It probably plays an essential role for recognition by the FBXO31 component of SCF (SKP1-cullin-F-box) protein ligase complex. ,similarity:Belongs to the cyclin family. ,similarity:Belongs to the cyclin family. Cyclin D subfamily. ,subunit:Interacts with the CDK4 and CDK6 protein kinases to form a serine/threonine kinase holoenzyme complex. The cyclin subunit imparts substrate specificity to the complex. ,

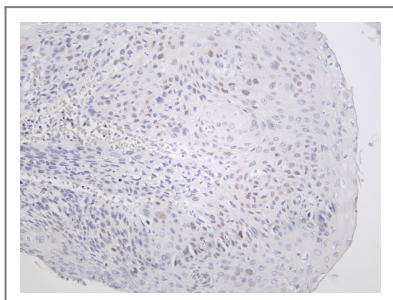
| Validation Data



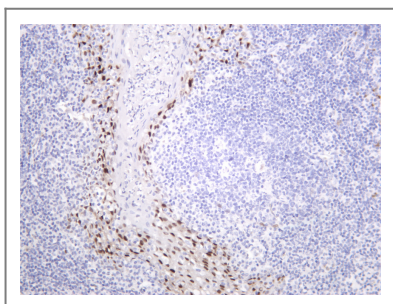
Various whole cell lysates were separated by 4-20% SDS-PAGE, and the primary antibody was used at 4°C over night with a 1:5000 dilution . The Dylight 800-conjugated Goat anti-Rabbit antibody (Cat:RS23920) was used to detect the antibody. Lane1: HL60 - Human promyelocytic leukemia cell Lane2: HUVEC - Human umbilical vein endothelial cell Lane3: Human CAF - Human cancer-associated fibroblast Lane4: HCT116 - Human colorectal carcinoma Lane5: A549 - Human lung carcinoma Lane6: Jurkat - Human T lymphocyte leukemia Lane7: HT22 - Mouse hippocampal neuronal Lane8: Thp-1 - Human monocytic leukemia Lane9: HK-2 - Human proximal tubular epithelial Lane10: PC-12 - Rat adrenal pheochromocytoma Lane11: 3T3-L1 - Mouse embryonic fibroblast Lane12: PC-3 - Human prostate adenocarcinoma Lane13: U-14 - Mouse cervical carcinoma Lane14: 293F - HEK293 derivative, adapted for suspension culture Predicted band size: 36kDa Observed band size: 36kDa



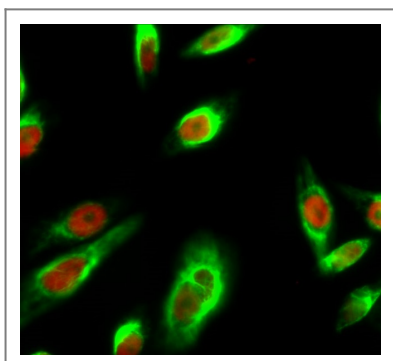
Various whole cell lysates were separated by 4-20% SDS-PAGE, and the membrane was blotted with anti-Cyclin D1 antibody. The HRP-conjugated Goat anti-Rabbit IgG (H + L) antibody was used to detect the antibody. Lane 1: Mouse spleen Lane 2: Rat spleen Lane 3: LnCap Lane 4: MCF7 Predicted band size: 34kDa Observed band size: 36kDa



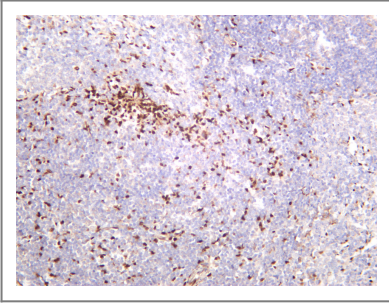
Human esophagus was stained with Anti-Cyclin D1 rabbit antibody



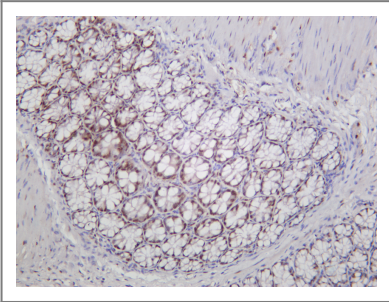
Human tonsil was stained with Anti-Cyclin D1 rabbit antibody



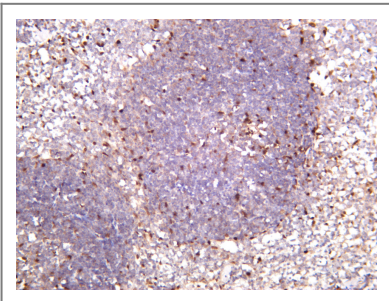
Immunofluorescence analysis of HeLa cell. 1, mouse Tubulin Antibody YM3505 (green) was diluted at 1:200 (4°C overnight). Cyclin D1 (PT0238R) Rabbit mAb (green) was diluted at 1:200 (4°C overnight). 2, Goat Anti Rabbit Alexa Fluor 594 Catalog:RS3611 was diluted at 1:1000 (room temperature, 50min). Goat Anti Mouse Alexa Fluor 488 Catalog:RS3208 was diluted at 1:1000 (room temperature, 50min).



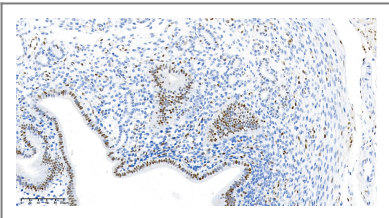
Rat spleen was stained with anti-Cyclin D1 rabbit antibody



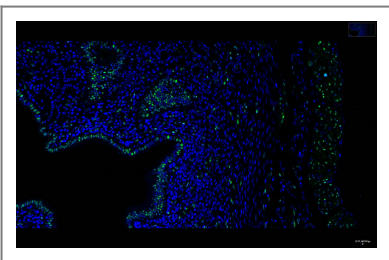
Mouse colon was stained with anti-Cyclin D1 rabbit antibody



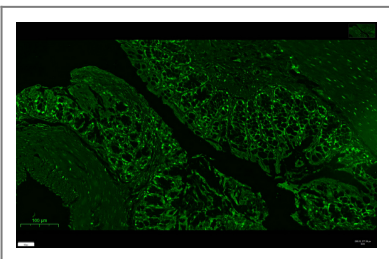
Mouse spleen was stained with anti-Cyclin D1 rabbit antibody



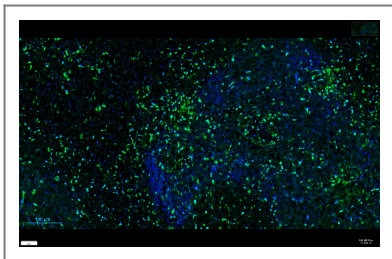
Mouse uterus was stained with anti-Cyclin D1 Rabbit antibody



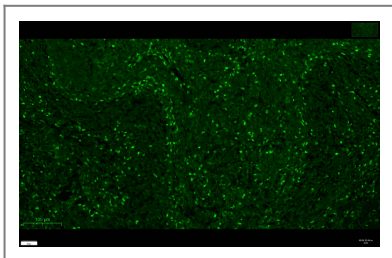
Mouse uterus was stained with anti-Cyclin D1 Rabbit antibody



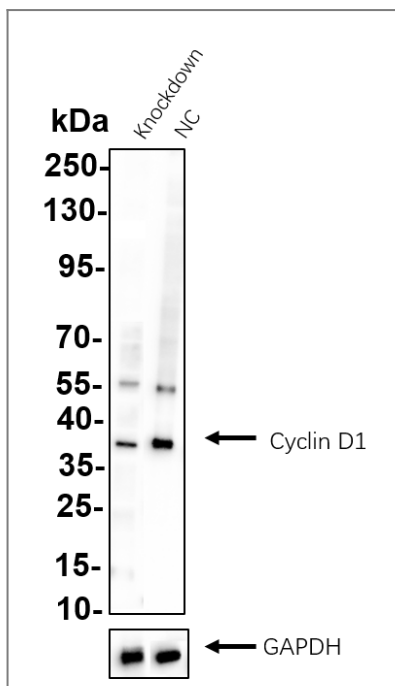
Mouse colon was stained with Anti-Cyclin D1 rabbit antibody



Mouse spleen was stained with Anti-Cyclin D1 rabbit antibody



Rat spleen was stained with Anti-Cyclin D1 rabbit antibody



Western blot analysis of lysates from MCF7 WT and knockdown cell. Cell lysates were separated by 4-20% SDS-PAGE, and the membrane was blotted with Cyclin D1 (PT0238R) rabbit mAb. The HRP-conjugated Goat anti-Rabbit IgG (H + L) antibody was used to detect the antibody.

Contact information

Orders: order.cn@immunoway.com
Support: support.cn@immunoway.com
Telephone: 400-8787-807(China)
Website: <http://www.immunoway.com.cn>
Address: 2200 Ringwood Ave San Jose, CA 95131 USA



Please scan the QR code to access additional product information:
Cyclin D1 (PT0238R)
PT™ Rabbit mAb