

p130 (PT1428R) PT™ Rabbit mAb

CatalogNo: YM9270 **Recombinant** 

Key Features

Host Species

- Rabbit

Reactivity

- Human, Mouse, Rat

Applications

- WB, IHC, IF, ELISA

MW

- 128kD (Calculated)
130kD (Observed)

Isotype

- IgG, Kappa

Storage

Storage* -15°C to -25°C/1 year (Do not lower than -25°C)

Formulation PBS, 50% glycerol, 0.05% Proclin 300, 0.05% BSA

Recommended Dilution Ratios

IHC 1:200-1:1000

WB 1:2000-1:10000

IF 1:200-1:1000

ELISA 1:5000-1:20000

Basic Information

Clonality Monoclonal

Clone Number PT1428R

Immunogen Information

Immunogen The specific immunogen used to produce this antibody is proprietary information.

Specificity Endogenous

| Target Information

Gene name RBL2

Protein Name Retinoblastoma-like protein 2

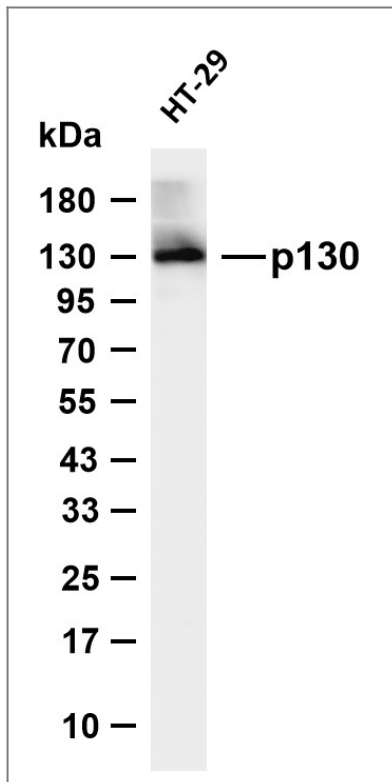
Organism	Gene ID	UniProt ID
Human	5934 ;	Q08999 ;
Mouse	19651 ;	Q64700 ;
Rat	81758 ;	Q55081 ;

Cellular Localization Nucleus.

Tissue specificity Human bone marrow ,Placenta ,Spleen ,Testis ,

Function Function:Key regulator of entry into cell division. Directly involved in heterochromatin formation by maintaining overall chromatin structure and , in particular , that of constitutive heterochromatin by stabilizing histone methylation. Recruits and targets histone methyltransferases SUV420H1 and SUV420H2 , leading to epigenetic transcriptional repression. Controls histone H4 'Lys-20' trimethylation. Probably acts as a transcription repressor by recruiting chromatin-modifying enzymes to promoters. Potent inhibitor of E2F-mediated trans-activation , associates preferentially with E2F5. Binds to cyclins A and E. Binds to and may be involved in the transforming capacity of the adenovirus E1A protein. May act as a tumor suppressor. ,miscellaneous:G0-restricted expression. ,PTM:During G0 and early G1 phase of the cell cycle , phosphorylated on Ser-639 and on 5 sites within the domain B. Phosphorylation on Ser-672 in G1 leads to its ubiquitin-dependent proteolysis. ,similarity:Belongs to the retinoblastoma protein (RB) family. ,subunit:Interacts with AATF. Interacts with SUV420H1 and SUV420H2 (By similarity) . Component of the DREAM complex (also named LINC complex) at least composed of E2F4 , E2F5 , LIN9 , LIN37 , LIN52 , LIN54 , MYBL1 , MYBL2 , RBL1 , RBL2 , RBBP4 , TFDP1 and TFDP2. The complex exists in quiescent cells where it represses cell cycle-dependent genes. It dissociates in S phase when LIN9 , LIN37 , LIN52 and LIN54 form a subcomplex that binds to MYBL2. Interacts with RINT1. ,

| Validation Data



Various whole cell lysates were separated by 4-20% SDS-PAGE, and the membrane was blotted with anti-p130 (PT1428R) antibody. The HRP-conjugated Goat anti-Rabbit IgG (H + L) antibody was used to detect the antibody. Lane 1: HT-29 Predicted band size: 128kDa Observed band size: 130kDa

Contact information

Orders: order.cn@immunoway.com
Support: support.cn@immunoway.com
Telephone: 400-8787-807(China)
Website: <http://www.immunoway.com.cn>
Address: 2200 Ringwood Ave San Jose, CA 95131 USA



Please scan the QR code to access additional product information:
p130 (PT1428R)
PT™ Rabbit mAb

For Research Use Only. Not for Use in Diagnostic Procedures.

[Antibody](#) | [ELISA Kits](#) | [Protein](#) | [Reagents](#)