

IL-2 (PT1458R) PT™ Rabbit mAb

CatalogNo: YM9300 **Recombinant** 

Key Features

Host Species

- Rabbit

Reactivity

- Human

Applications

- WB,IF,IP,ELISA

MW

- 18kD (Calculated)
14kD (Observed)

Isotype

- IgG, Kappa

Storage

Storage* -15°C to -25°C/1 year (Do not lower than -25°C)

Formulation PBS, 50% glycerol, 0.05% Proclin 300, 0.05%BSA

Recommended Dilution Ratios

WB 1:500-1:2000

IF 1:200-1:1000

ELISA 1:5000-1:20000

IP 1:50-1:200

Basic Information

Clonality Monoclonal

Clone Number PT1458R

Immunogen Information

Immunogen The specific immunogen used to produce this antibody is proprietary information.

Specificity Endogenous

Target Information

Gene name IL2

Protein Name Interleukin-2

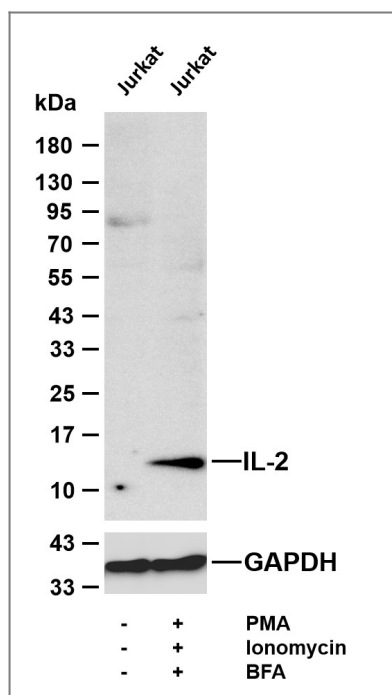
Organism	Gene ID	UniProt ID
Human	3558 ;	P60568 ;
Mouse		P04351 ;
Rat	116562 ;	P17108 ;

Cellular Localization Secreted.

Tissue specificity Blood ,PCR rescued clones ,Placenta ,Spleen ,

Function Disease:A chromosomal aberration involving IL2 is found in a form of T-cell acute lymphoblastic leukemia (T-ALL) . Translocation t (4;16) (q26;p13) with involves TNFRSF17. ,Function:Produced by T-cells in response to antigenic or mitogenic stimulation , this protein is required for T-cell proliferation and other activities crucial to regulation of the immune response. Can stimulate B-cells , monocytes , lymphokine-activated killer cells , natural killer cells , and glioma cells. ,online information:Interleukin-2 entry ,online information:The Singapore human mutation and polymorphism database ,pharmaceutical:Available under the name Proleukin (Chiron) . Used in patients with renal cell carcinoma or metastatic melanoma. ,similarity:Belongs to the IL-2 family. ,

Validation Data



Various whole cell lysates were separated by 4-20% SDS-PAGE, and the membrane was blotted with anti-IL-2 (PT1458R) antibody. The HRP-conjugated Goat anti-Rabbit IgG (H + L) antibody was used to detect the antibody. Lane 1: Jurkat Lane 2: Jurkat was treated overnight with PMA (40nM), Ionomycin (2 μ M), and BFA (300ng/ml) (delayed for 45 minutes) Predicted band size: 18kDa Observed band size: 14kDa

| Contact information

Orders: order.cn@immunoway.com
Support: support.cn@immunoway.com
Telephone: 400-8787-807(China)
Website: <http://www.immunoway.com.cn>
Address: 2200 Ringwood Ave San Jose, CA 95131 USA



Please scan the QR code
to access additional
product information:
IL-2 (PT1458R) PT™
Rabbit mAb

For Research Use Only. Not for Use in Diagnostic Procedures.

[Antibody](#) | [ELISA Kits](#) | [Protein](#) | [Reagents](#)