

## CAH11 Rabbit pAb

CatalogNo: YN0552

### Key Features

#### Host Species

- Rabbit

#### Reactivity

- Human, Mouse

#### Applications

- WB, ELISA

#### MW

- 36kD (Observed)

#### Isotype

- IgG

### Recommended Dilution Ratios

**WB 1:500-2000**

**ELISA 1:5000-20000**

### Storage

**Storage\*** -15°C to -25°C/1 year (Do not lower than -25°C)

**Formulation** Liquid in PBS containing 50% glycerol, and 0.02% sodium azide.

### Basic Information

**Clonality** Polyclonal

### Immunogen Information

**Immunogen** Synthesized peptide derived from part region of human protein

**Specificity** CAH11 Polyclonal Antibody detects endogenous levels of protein.

### Target Information

**Gene name** CA11 CARP2 UNQ211/PRO237

**Protein Name** Carbonic anhydrase-related protein 11 (CA-RP XI) (CA-XI) (CARP XI) (Carbonic anhydrase-related protein 2) (CA-RP II) (CARP-2)

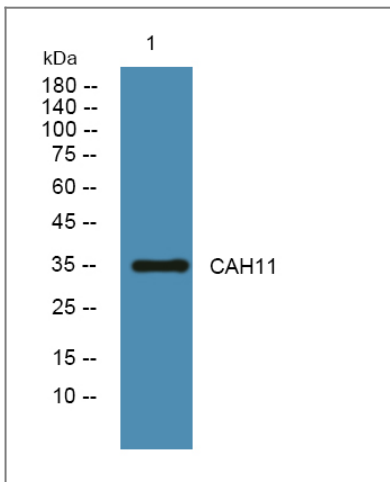
Organism	Gene ID	UniProt ID
Human	<a href="#">770;</a>	<a href="#">O75493;</a>
Mouse		<a href="#">O70354;</a>

**Cellular Localization** Secreted .

**Tissue specificity** Expressed abundantly in the brain with moderate expression also present in spinal cord and thyroid.

**Function** Function:Does not have a catalytic activity.,similarity:Belongs to the alpha-carbonic anhydrase family.,tissue specificity:Expressed abundantly in the brain with moderate expression also present in spinal cord and thyroid.,

## Validation Data



Western blot analysis of lysates from PC12 cells, primary antibody was diluted at 1:1000, 4° over night

## Contact information

Orders: [order.cn@immunoway.com](mailto:order.cn@immunoway.com)  
Support: [support.cn@immunoway.com](mailto:support.cn@immunoway.com)  
Telephone: 408-747-0189 (USA) 400-8787-807(China)  
Website: <http://www.immunoway.com.cn>  
Address: 2200 Ringwood Ave San Jose, CA 95131 USA



Please scan the QR code to access additional product information:  
**CAH11 Rabbit pAb**