

## REM2 Rabbit pAb

CatalogNo: YN0747

### Key Features

#### Host Species

- Rabbit

#### Reactivity

- Human,Rat,Mouse

#### Applications

- WB,ELISA

#### MW

- 37kD (Observed)

#### Isotype

- IgG

### Recommended Dilution Ratios

**WB 1:500-2000**

**ELISA 1:5000-20000**

### Storage

**Storage\*** -15°C to -25°C/1 year(Do not lower than -25°C)

**Formulation** Liquid in PBS containing 50% glycerol, and 0.02% sodium azide.

### Basic Information

**Clonality** Polyclonal

### Immunogen Information

**Immunogen** Synthesized peptide derived from part region of human protein

**Specificity** REM2 Polyclonal Antibody detects endogenous levels of protein.

### Target Information

**Gene name** REM2

**Protein Name** GTP-binding protein REM 2 (Rad and Gem-like GTP-binding protein 2)

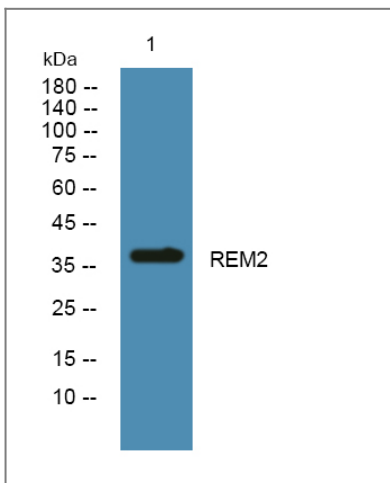
Organism	Gene ID	UniProt ID
Human	<a href="#">161253</a> ;	<a href="#">Q8IYK8</a> ;
Mouse		<a href="#">Q8VEL9</a> ;
Rat		<a href="#">Q9WTY2</a> ;

**Cellular Localization** Cell membrane .

**Tissue specificity** Ovary,

**Function** Caution:It is uncertain whether Met-1 or Met-59 is the initiator.,Function:Binds GTP saturably and exhibits a low intrinsic rate of GTP hydrolysis.,similarity:Belongs to the small GTPase superfamily. RGK family.,

## Validation Data



Western blot analysis of lysates from A431 cells, primary antibody was diluted at 1:1000, 4° over night

## Contact information

Orders: [order.cn@immunoway.com](mailto:order.cn@immunoway.com)  
Support: [support.cn@immunoway.com](mailto:support.cn@immunoway.com)  
Telephone: 408-747-0189 (USA) 400-8787-807(China)  
Website: <http://www.immunoway.com.cn>  
Address: 2200 Ringwood Ave San Jose, CA 95131 USA



Please scan the QR code to access additional product information:  
**REM2 Rabbit pAb**