

GIPR Rabbit pAb

CatalogNo: YT1906

Key Features

Host Species

- Rabbit

Reactivity

- Human, Mouse, Rat

Applications

- WB, IHC, IF, ELISA

MW

- 53kD (Observed)

Isotype

- IgG

Storage

Storage* -15°C to -25°C/1 year (Do not lower than -25°C)

Formulation Liquid in PBS containing 50% glycerol, 0.5% BSA and 0.02% sodium azide.

Recommended Dilution Ratios

WB 1:500-1:2000

IHC 1:100-1:300

IF 1:200-1:1000

ELISA 1:20000

Not yet tested in other applications.

Basic Information

Clonality Polyclonal

Immunogen Information

Immunogen The antiserum was produced against synthesized peptide derived from human GIPR. AA range:93-142

Specificity GIPR Polyclonal Antibody detects endogenous levels of GIPR protein.

Target Information

Gene name GIPR
Protein Name Gastric inhibitory polypeptide receptor

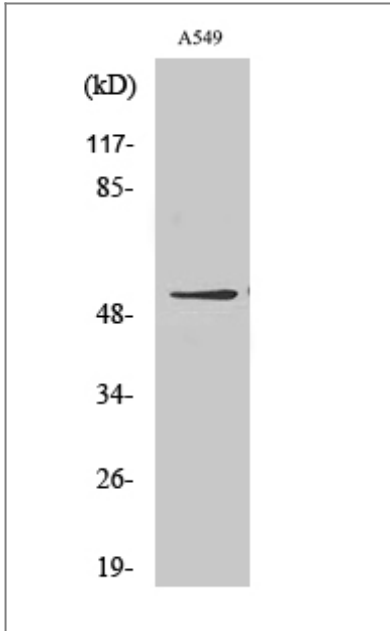
Organism	Gene ID	UniProt ID
Human	2696 ;	P48546 ;
Mouse		Q0P543 ;

Cellular Localization Cell membrane; Multi-pass membrane protein.

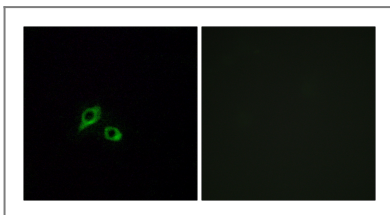
Tissue specificity Colon,G-protein coupled receptors,Pancreas,

Function Function:This is a receptor for GIP. The activity of this receptor is mediated by G proteins which activate adenylyl cyclase.,similarity:Belongs to the G-protein coupled receptor 2 family.,

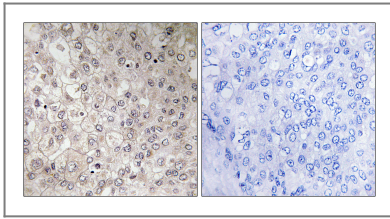
Validation Data



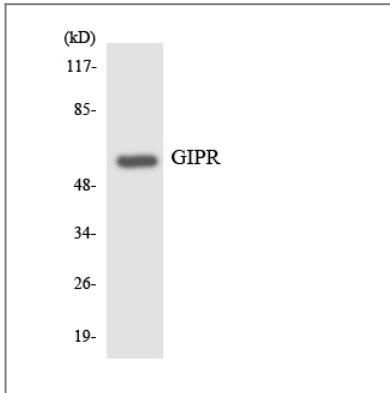
Western Blot analysis of various cells using GIPR Polyclonal Antibody



Immunofluorescence analysis of MCF7 cells, using GIPR Antibody. The picture on the right is blocked with the synthesized peptide.



Immunohistochemistry analysis of paraffin-embedded human liver carcinoma tissue, using GIPR Antibody. The picture on the right is blocked with the synthesized peptide.



Western blot analysis of the lysates from HT-29 cells using GIPR antibody.

Contact information

Orders: order.cn@immunoway.com
Support: support.cn@immunoway.com
Telephone: 400-8787-807(China)
Website: <http://www.immunoway.com.cn>
Address: 2200 Ringwood Ave San Jose, CA 95131 USA



Please scan the QR code to access additional product information:
GIPR Rabbit pAb

For Research Use Only. Not for Use in Diagnostic Procedures.

[Antibody](#) | [ELISA Kits](#) | [Protein](#) | [Reagents](#)