

NGF Rabbit pAb

CatalogNo: YT3114

Orthogonal Validated 

Key Features

Host Species

- Rabbit

Reactivity

- Human, Mouse, Rat

Applications

- WB, IHC, IF, ELISA

MW

- 27kD (Observed)

Isotype

- IgG

Recommended Dilution Ratios

WB 1:500-1:2000**IHC: 1:100-300****ELISA 1:20000****IF 1:100-300****Not yet tested in other applications.**

Storage

Storage*

-15°C to -25°C/1 year (Do not lower than -25°C)

Formulation

Liquid in PBS containing 50% glycerol, 0.5% BSA and 0.02% sodium azide.

Basic Information

Clonality

Polyclonal

Immunogen Information

Immunogen

The antiserum was produced against synthesized peptide derived from human NGF. AA range: 33-82

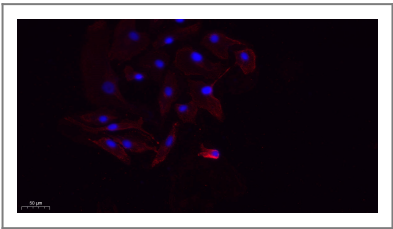
Specificity

NGF Polyclonal Antibody detects endogenous levels of NGF protein.

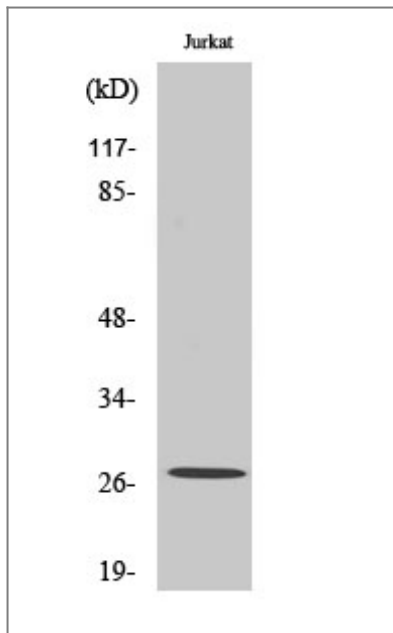
| Target Information

Gene name	NGF		
Protein Name	Beta-nerve growth factor		
	Organism	Gene ID	UniProt ID
	Human	4803 ;	P01138 ;
	Mouse	18049 ;	P01139 ;
	Rat	310738 ;	P25427 ;
Cellular Localization	Secreted . Endosome lumen . ProNGF is endocytosed after binding to the cell surface receptor formed by SORT1 and NGFR. .		
Tissue specificity	Brain,Epithelium,Eye,Leukocyte,		
Function	Disease:Defects in NGF are the cause of hereditary sensory and autonomic neuropathy type 5 (HSAN5) [MIM:608654]. The hereditary sensory and autonomic neuropathies are a genetically and clinically heterogeneous group of disorders characterized by degeneration of dorsal root and autonomic ganglion cells, and by sensory and/or autonomic abnormalities. HSAN5 patients manifest loss of pain perception and impaired temperature sensitivity, ulcers, and in some cases self-mutilation. The autonomic involvement is variable.,Function:Nerve growth factor is important for the development and maintenance of the sympathetic and sensory nervous systems. It stimulates division and differentiation of sympathetic and embryonic sensory neurons.,online information:Nerve growth factor entry,similarity:Belongs to the NGF-beta family.,subunit:Homodimer.,		

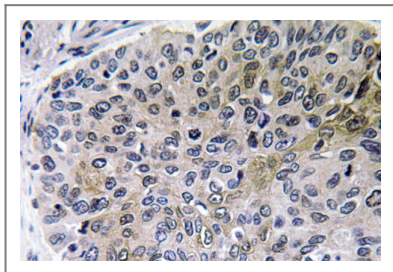
| Validation Data



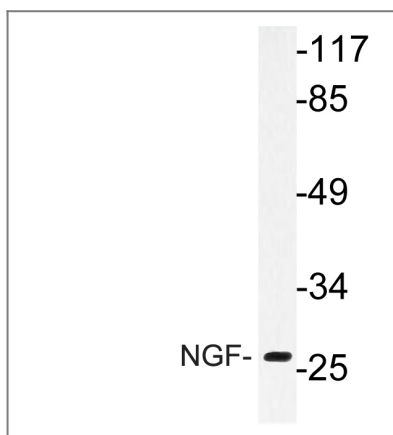
Immunofluorescence analysis of A549. 1,primary Antibody(red) was diluted at 1:200(4°C overnight). 2, Goat Anti Rabbit IgG (H&L) - Alexa Fluor 594 Secondary antibody was diluted at 1:1000(room temperature, 50min).3, Picture B: DAPI(blue) 10min.



Western Blot analysis of Jurkat cells using NGF Polyclonal Antibody diluted at 1:2000



Immunohistochemistry analysis of NGF antibody in paraffin-embedded human lung carcinoma tissue.



Western blot analysis of lysate from Jurkat cells, using NGF antibody.

Contact information

Orders: order.cn@immunoway.com
 Support: support.cn@immunoway.com
 Telephone: 400-8787-807(China)
 Website: <http://www.immunoway.com.cn>
 Address: 2200 Ringwood Ave San Jose, CA 95131 USA



Please scan the QR code to access additional product information:
NGF Rabbit pAb

