

## TACE Rabbit pAb

CatalogNo: YT4523

### Key Features

#### Host Species

- Rabbit

#### Reactivity

- Human, Mouse, Rat

#### Applications

- IF, ELISA

#### MW

- 93kD (Calculated)

#### Isotype

- IgG

### Recommended Dilution Ratios

**IF 1:200-1:1000**

**ELISA 1:5000**

**Not yet tested in other applications**

### Storage

**Storage\*** -15°C to -25°C/1 year (Do not lower than -25°C)

**Formulation** Liquid in PBS containing 50% glycerol, 0.5% BSA and 0.02% sodium azide.

### Basic Information

**Clonality** Polyclonal

### Immunogen Information

**Immunogen** The antiserum was produced against synthesized peptide derived from human ADAM 17. AA range: 701-750

**Specificity** TACE Polyclonal Antibody detects endogenous levels of TACE protein.

### Target Information

**Gene name** ADAM17

**Protein Name** Disintegrin and metalloproteinase domain-containing protein 17

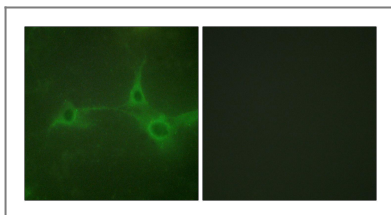
Organism	Gene ID	UniProt ID
Human	<a href="#">6868</a> ;	<a href="#">P78536</a> ;
Mouse	<a href="#">11491</a> ;	<a href="#">Q9Z0F8</a> ;
Rat	<a href="#">57027</a> ;	<a href="#">Q9Z1K9</a> ;

**Cellular Localization** Membrane; Single-pass type I membrane protein.

**Tissue specificity** Ubiquitously expressed. Expressed at highest levels in adult heart, placenta, skeletal muscle, pancreas, spleen, thymus, prostate, testes, ovary and small intestine, and in fetal brain, lung, liver and kidney. Expressed in natural killer cells (at protein level) (PubMed:24337742).

**Function** Catalytic activity:Narrow endopeptidase specificity. Cleaves Pro-Leu-Ala-Gln-Ala-|-Val-Arg-Ser-Ser-Ser in the membrane-bound, 26-kDa form of tumor necrosis factor alpha (TNF-alpha). Similarly cleaves other membrane-anchored, cell-surface proteins to 'shed' the extracellular domains.,cofactor:binds 1 zinc ion per subunit.,Domain:Must be membrane anchored to cleave the different substrates. The cytoplasmic domain is not required for the this activity. Only the catalytic domain is essential to shed TNF and p75 TNFR.,Domain:The conserved cysteine present in the cysteine-switch motif binds the catalytic zinc ion, thus inhibiting the enzyme. The dissociation of the cysteine from the zinc ion upon the activation-peptide release activates the enzyme.,Function:cleaves the membrane-bound precursor of TNF-alpha to its mature soluble form. Responsible for the proteolytic release of several other cell-surface proteins, including p75 TNF-receptor, interleukin 1 receptor type II, p55 TNF-receptor, transforming growth factor-alpha, L-selectin, growth hormone receptor, MUC1 and the amyloid precursor protein. Also involved in the activation of Notch pathway.,induction:In arthritis-affected cartilage.,online information:Tumor necrosis factor alpha-converting enzyme entry,PTM:Phosphorylated. Stimulation by growth factor or phorbol 12-myristate 13-acetate induces phosphorylation of Ser-819 but decreases phosphorylation of Ser-791.,PTM:The precursor is cleaved by a furin endopeptidase.,similarity:Contains 1 disintegrin domain.,similarity:Contains 1 peptidase M12B domain.,subunit:Interacts with MAD2L1 and MUC1.,tissue specificity:Ubiquitously expressed. Expressed at highest levels in adult heart, placenta, skeletal muscle, pancreas, spleen, thymus, prostate, testes, ovary and small intestine, and in fetal brain, lung, liver and kidney.,

## Validation Data



Immunofluorescence analysis of NIH/3T3 cells, using ADAM 17 Antibody. The picture on the right is blocked with the synthesized peptide.

## | Contact information

Orders: order.cn@immunoway.com  
Support: support.cn@immunoway.com  
Telephone: 400-8787-807(China)  
Website: <http://www.immunoway.com.cn>  
Address: 2200 Ringwood Ave San Jose, CA 95131 USA



Please scan the QR code  
to access additional  
product information:  
**TACE Rabbit pAb**

---

For Research Use Only. Not for Use in Diagnostic Procedures.

[Antibody](#) | [ELISA Kits](#) | [Protein](#) | [Reagents](#)